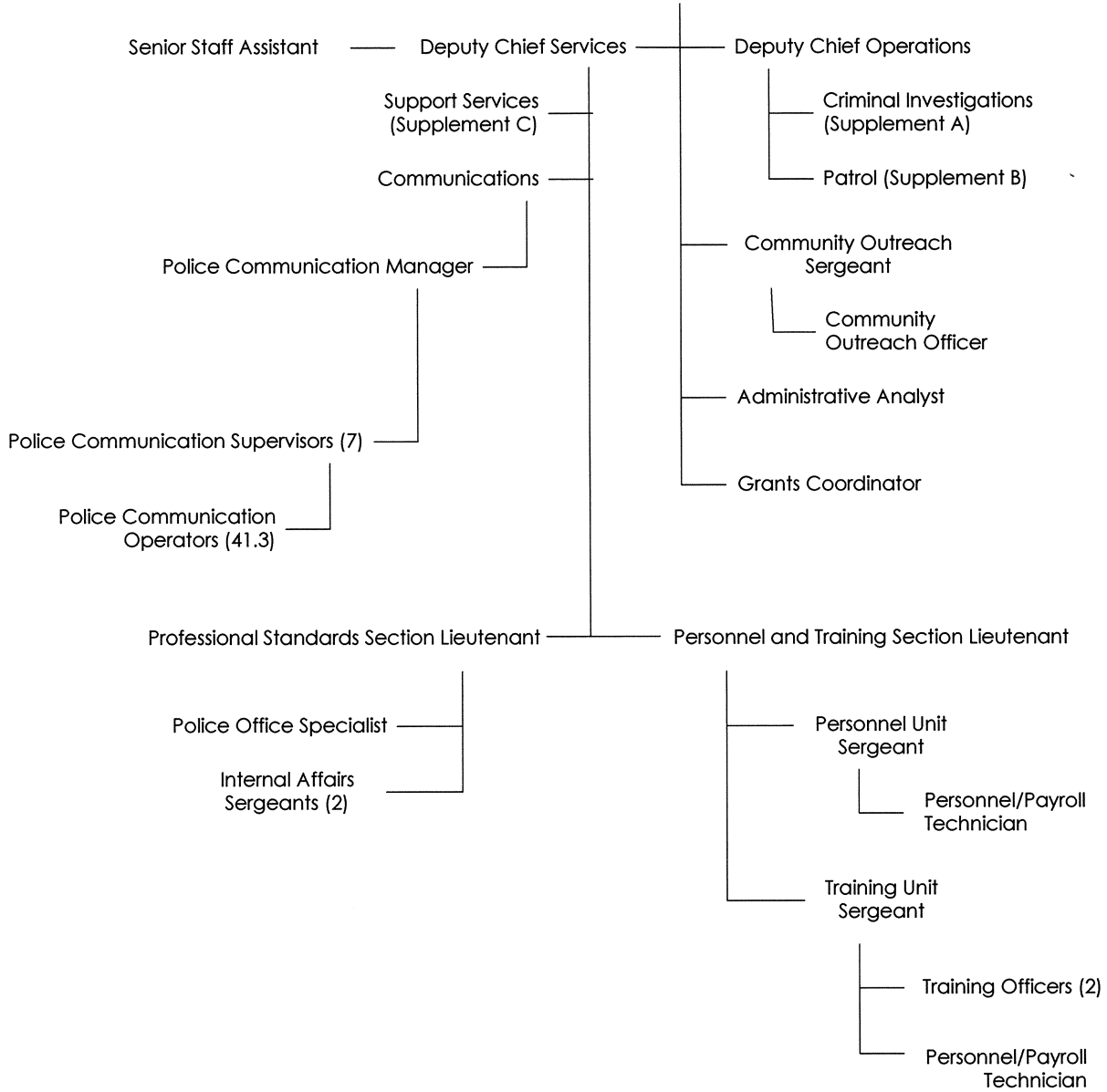
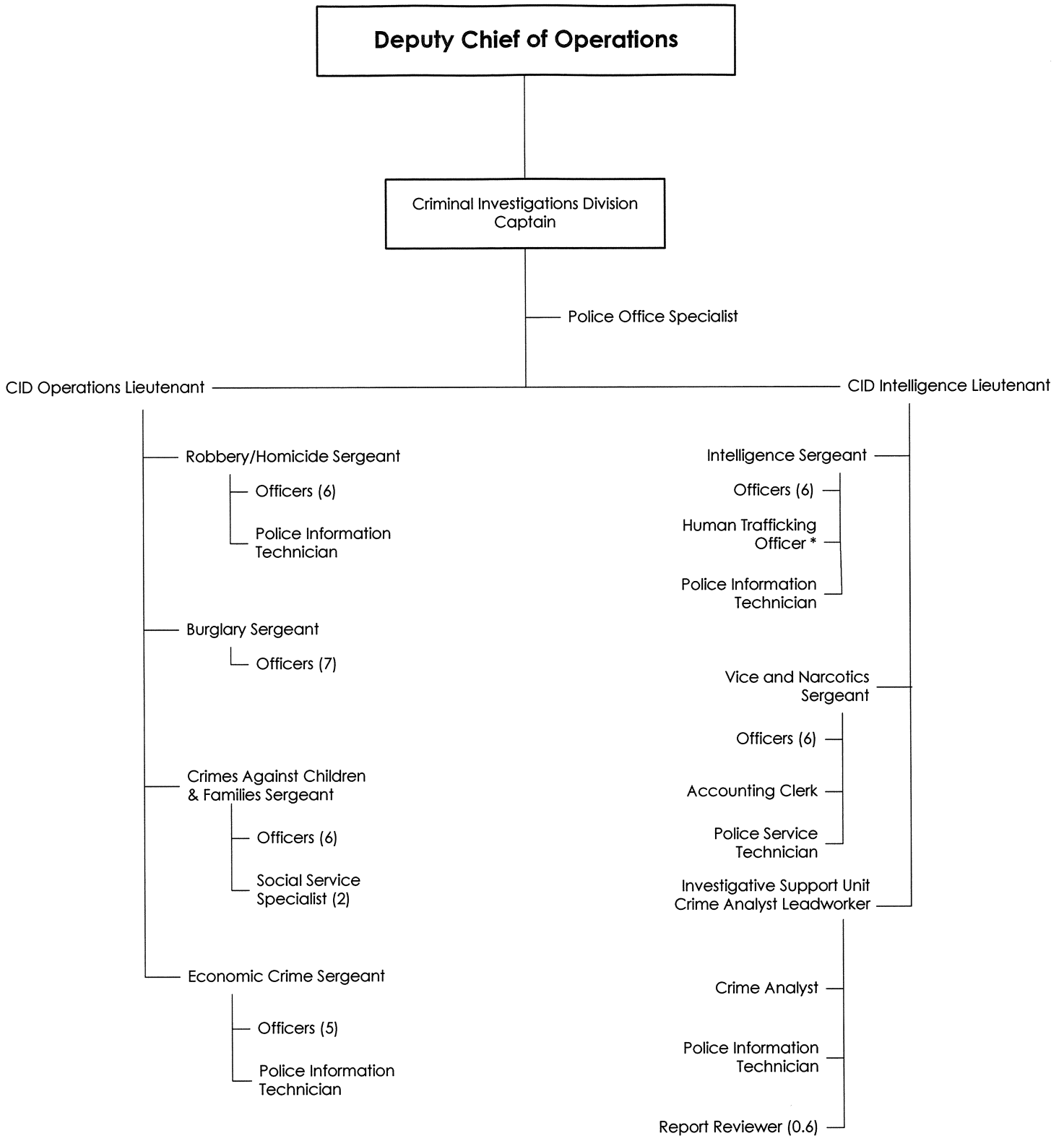


Chief of Police

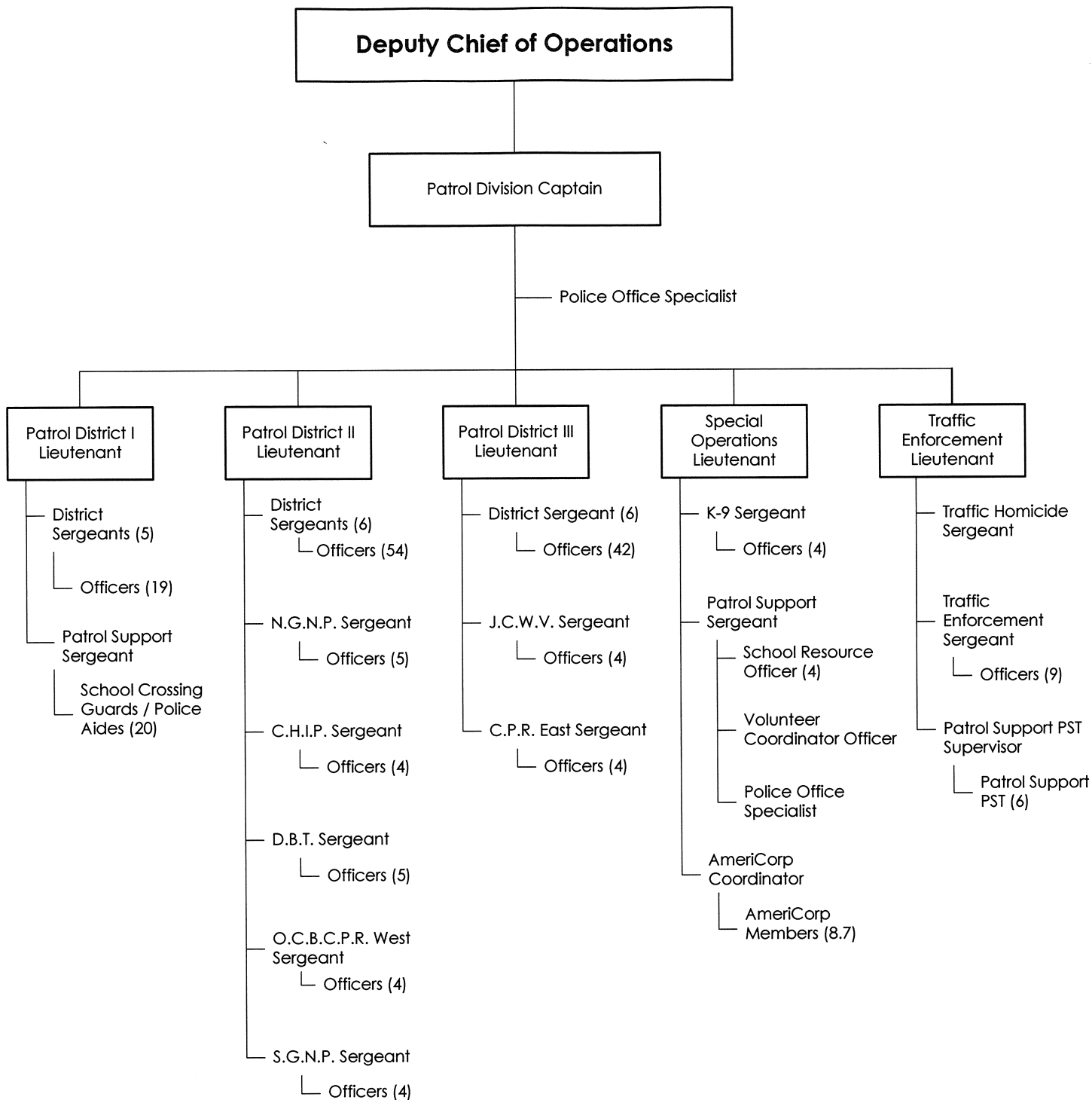


**Office of the Chief
Communications**

**19.0 FTE's
49.3 FTE's**

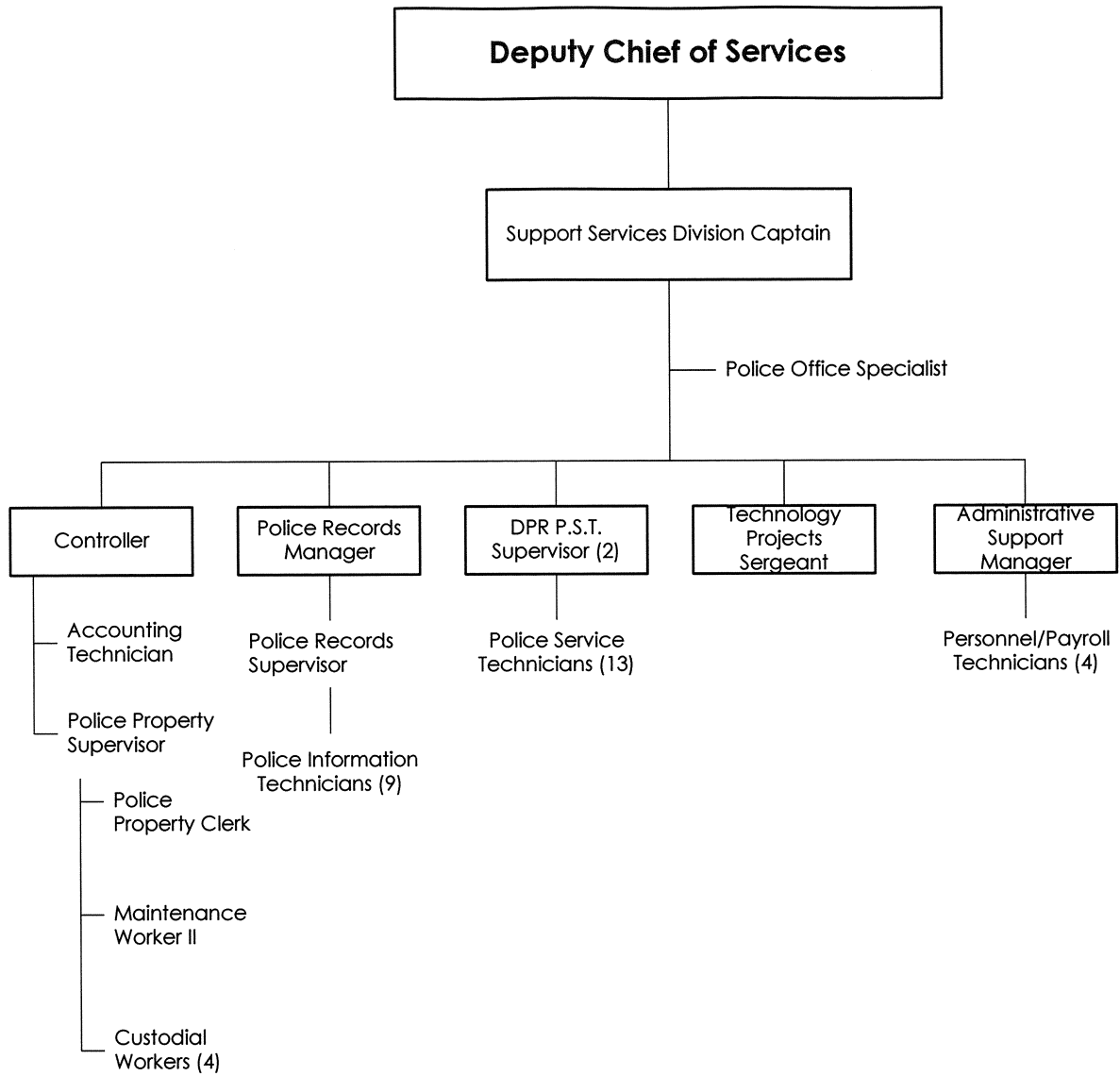


Supplement A
Criminal Investigations 56.6 FTE's
Human Trafficking Grant * 1.0
 * Grant pays for replacement positions in Patrol.



Supplement B
Patrol
AmeriCorp Program

227.0 FTE's
9.7



Supplement C
Support Services
Outside Duty Project

42.0 FTE's
1.0 FTE