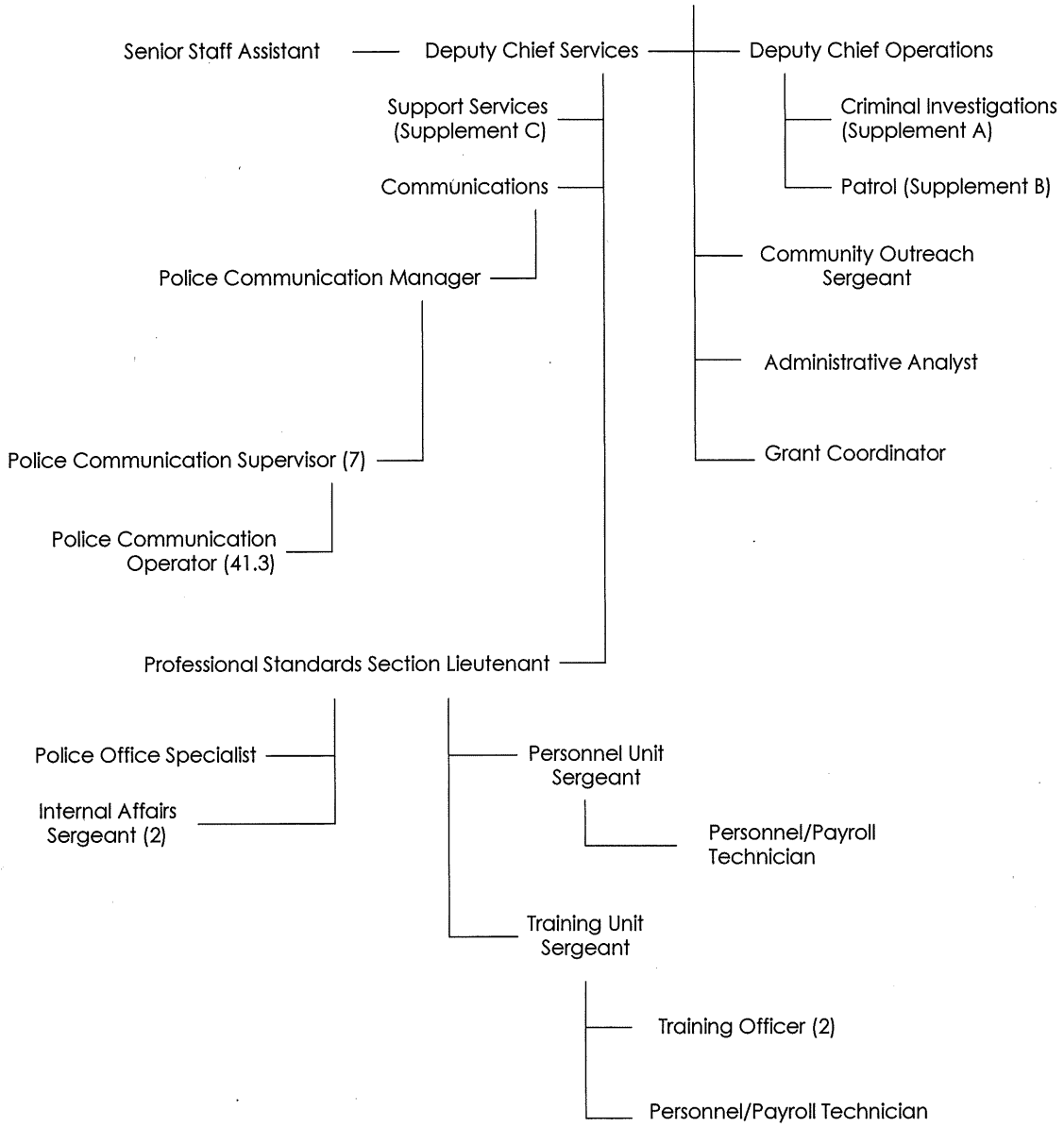
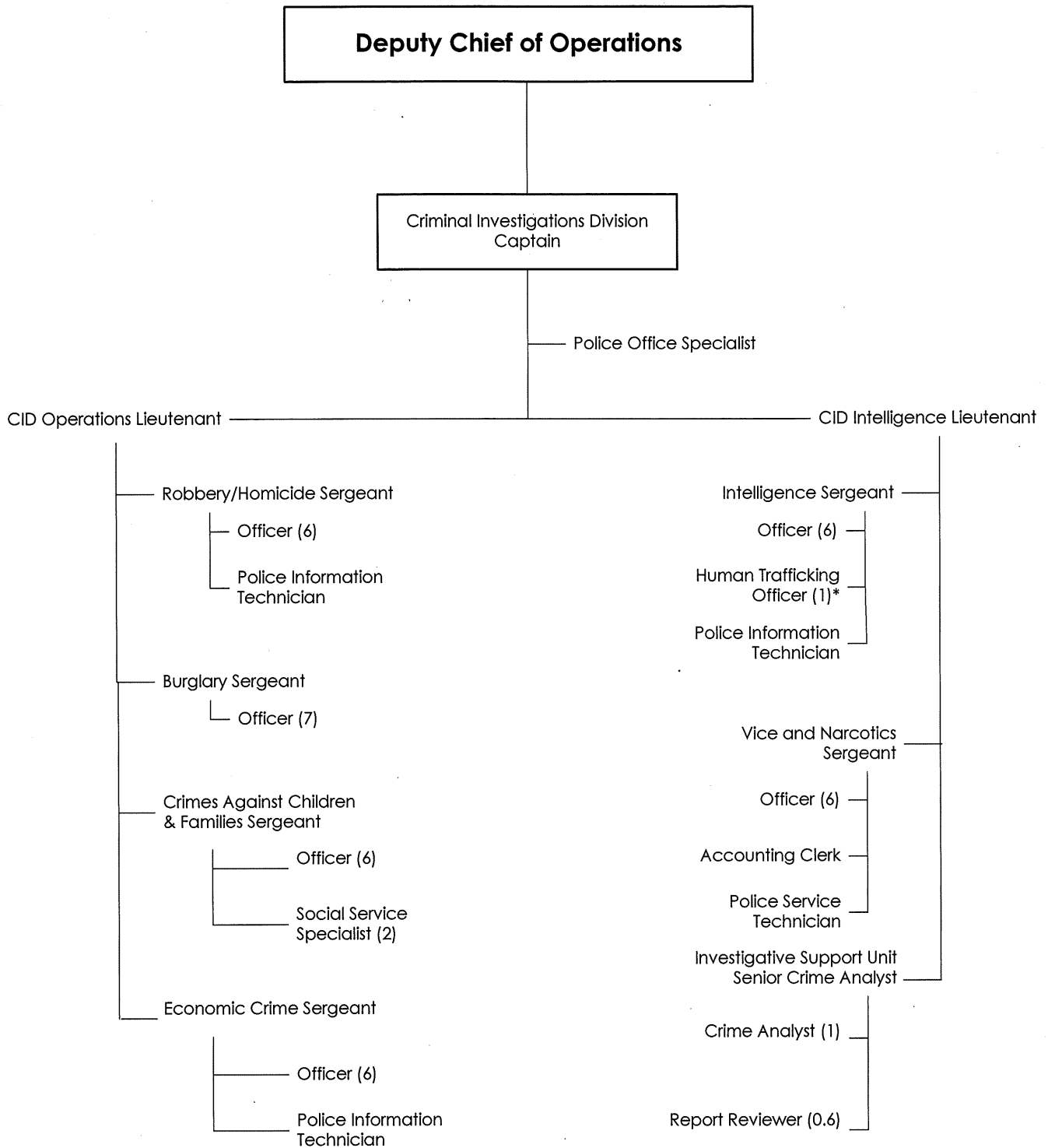


# Chief of Police



**Office of the Chief  
Communications**

**17.0 FTE's  
49.3 FTE's**



**Supplement A**

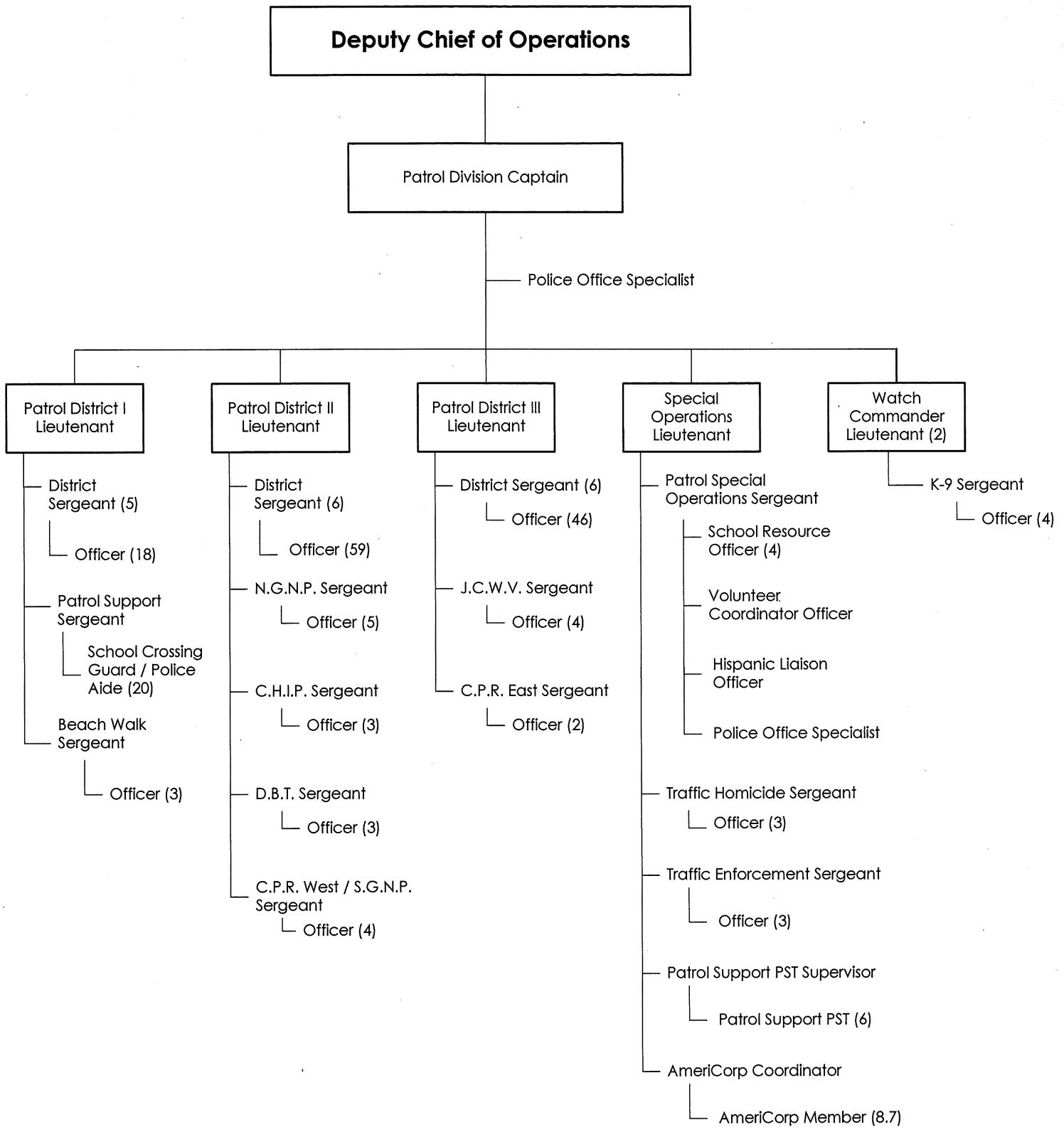
**Criminal Investigations**

**56.6 FTE's**

**Human Trafficking Grant \***

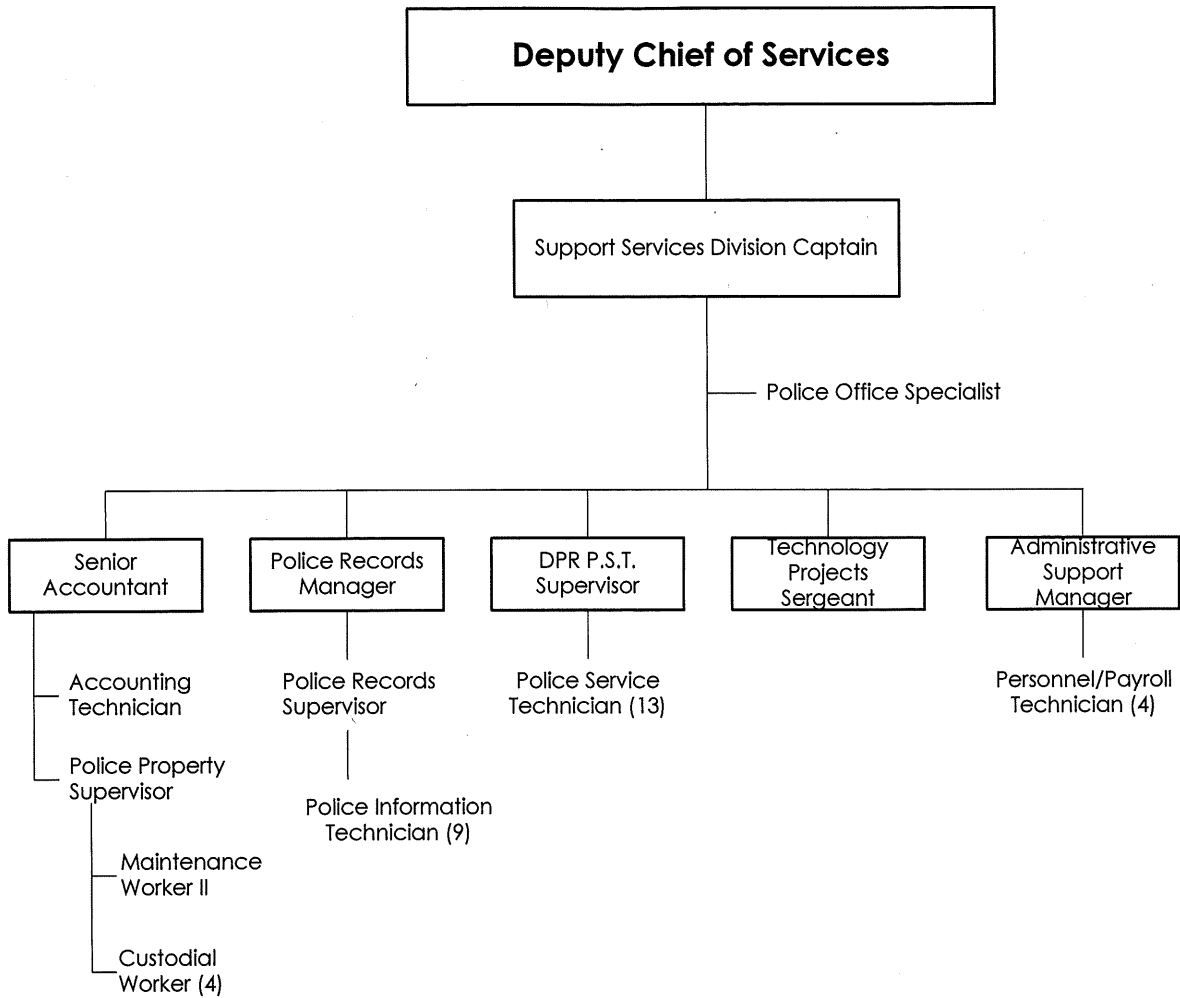
**1.0**

\* Grant pays for replacement position in Patrol.



**Supplement B**  
**Patrol**  
**AmeriCorp Program**

**228.0 FTE's**  
**9.7 FTE's**



**Supplement C**  
**Support Services**  
**Outside Duty Project**

**39.0 FTE's**  
**1.0 FTE**