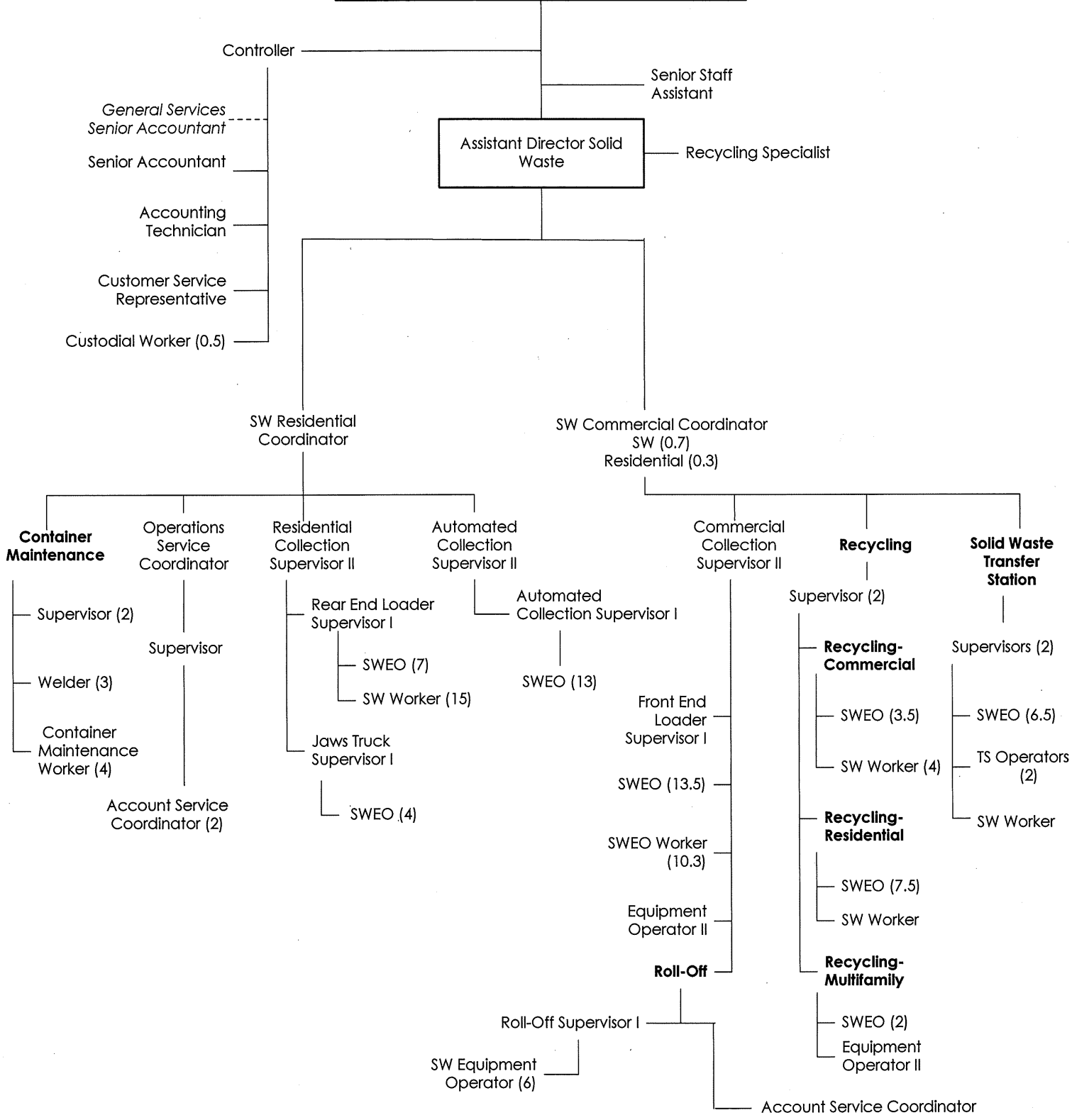


**Director  
Solid Waste / General Services  
(0.5)**



**Solid Waste Fund  
Recycling Fund  
Total**

**112.0 FTE's  
22.3 FTE's  
134.3 FTE's**

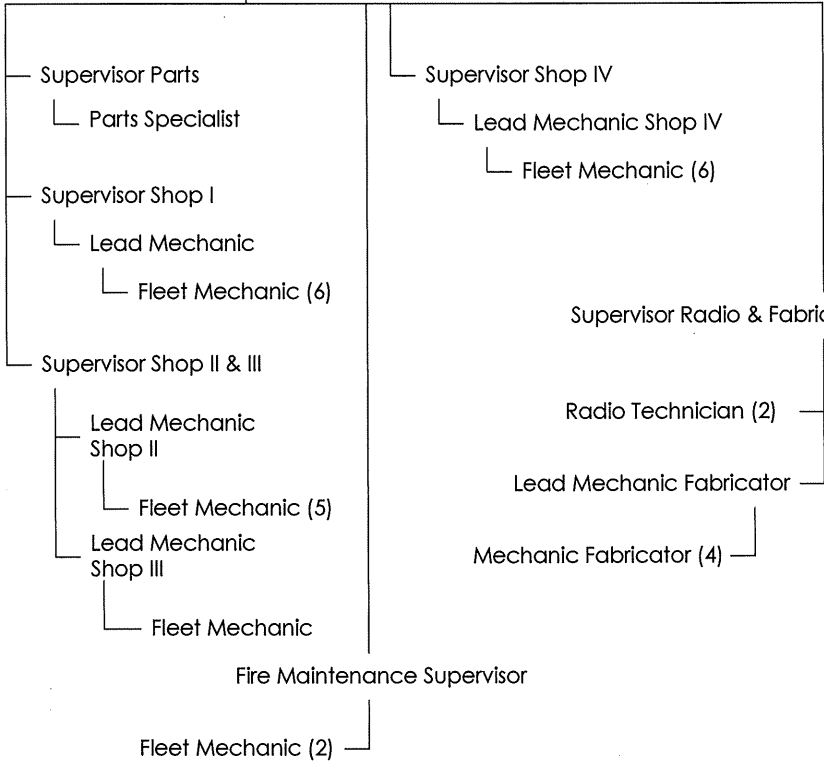
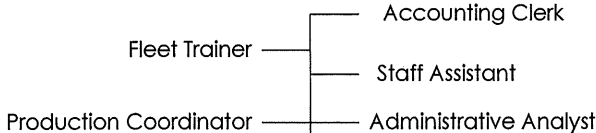
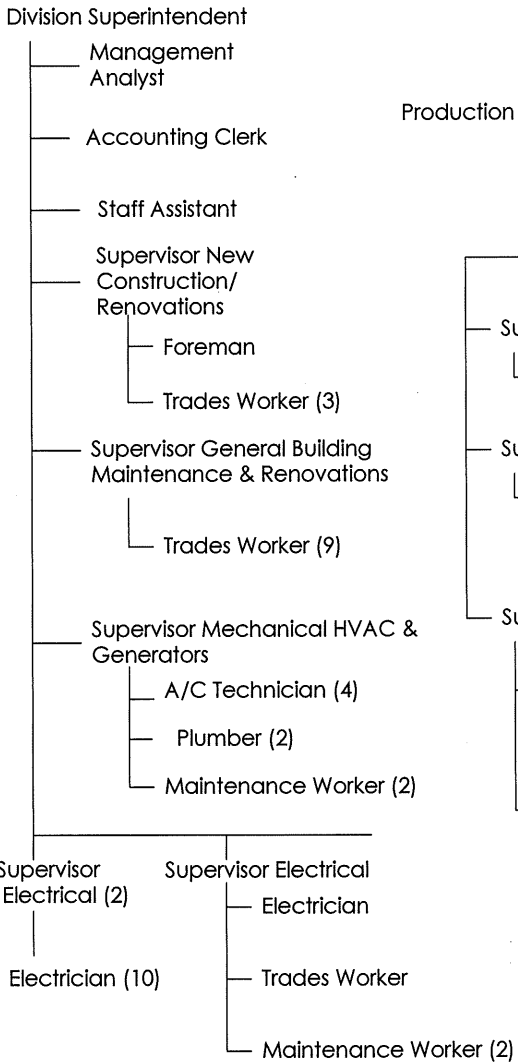
**Director  
Solid Waste/General Services (0.5)**

Assistant Director General Services

Senior Accountant - - - - -

**Building & Maintenance**

**Fleet Manager**



**General Services 47.5 FTE's**  
**Fleet and Radio 44.0 FTE's**  
**Total General Services/Fleet 91.5 FTE's**