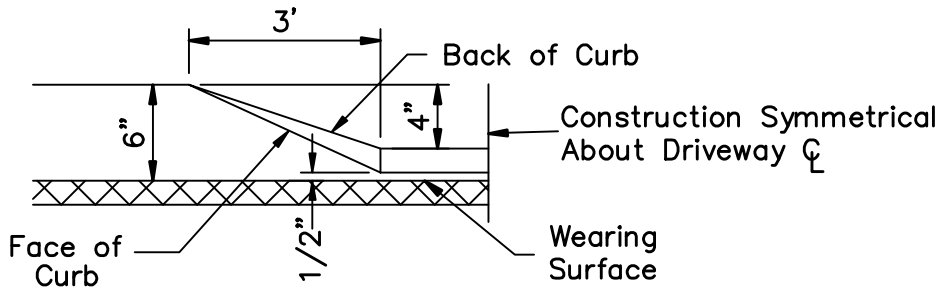
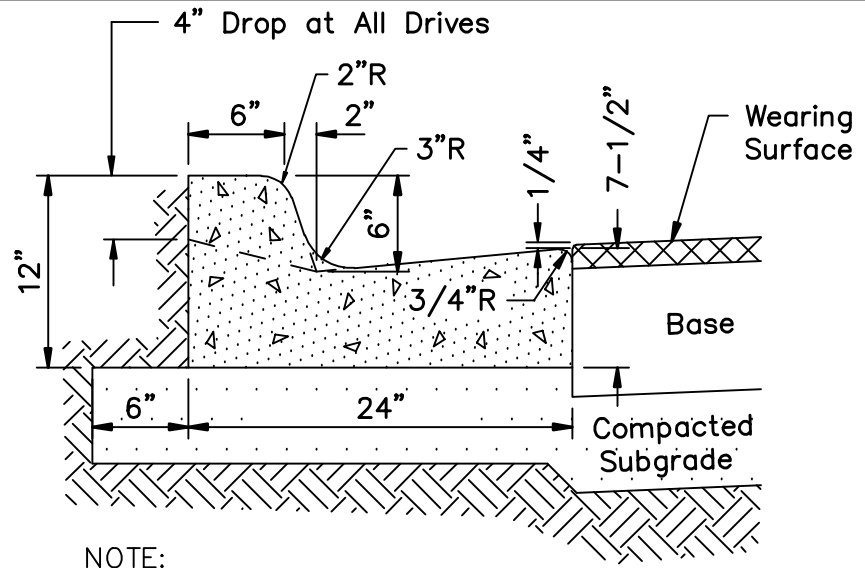


STRAIGHT CURB



3' TRANSITION AT DRIVES



NOTE:

When used on high side of roadways, the cross slope of the gutter shall match the cross slope of the adjacent pavement and the thickness of the lip shall be 6", unless otherwise shown on plans.

TYPE I CURB

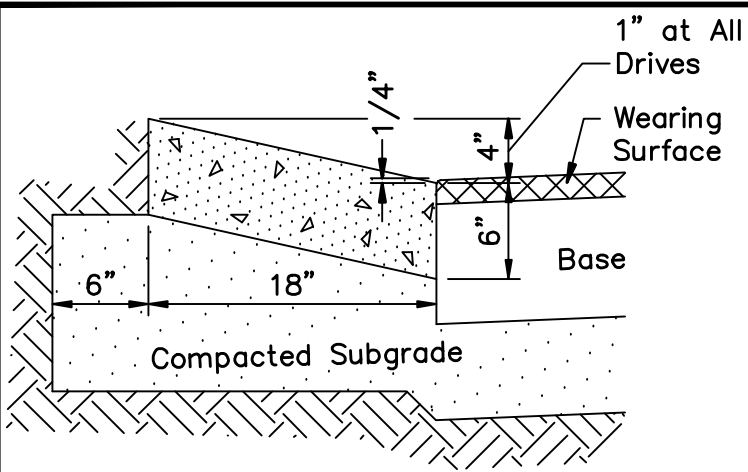
TYPICAL CURB CROSS SECTIONS

CITY INDEX NO. 101; 1 OF 2
N.T.S.

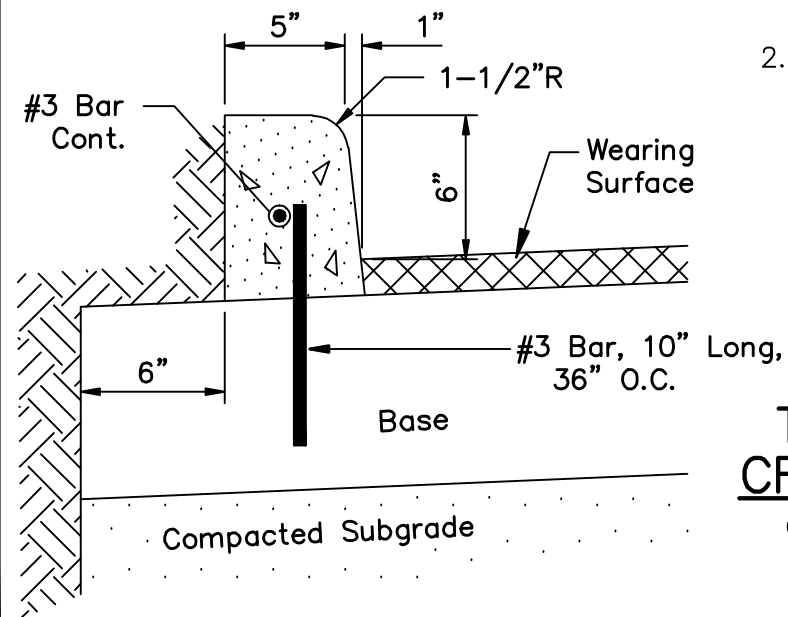
NOTES:

1. There shall be a 1/2" seal joint between back of curb and driveway.
2. Concrete in curbs shall be 3000 psi, with fiber mesh reinforcing.

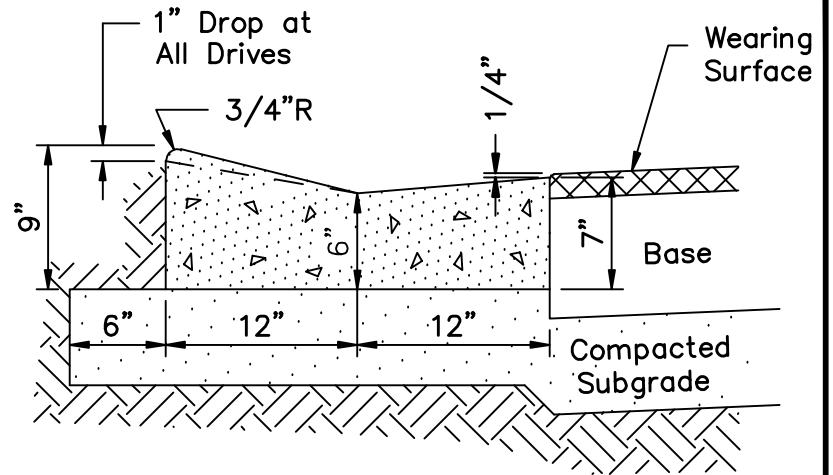
				CITY OF CLEARWATER, FLORIDA ENGINEERING DEPARTMENT		
				REDRAWN BY Novo	TYPICAL CURB CROSS	DATE 01/09
				CHECKED BY W.J.S.	SECTIONS	INDEX NO. 101
REV.	DATE	DESCRIPTION	APP.	DESIGNED BY C.M.H.		1 OF 2



MODIFIED CURB



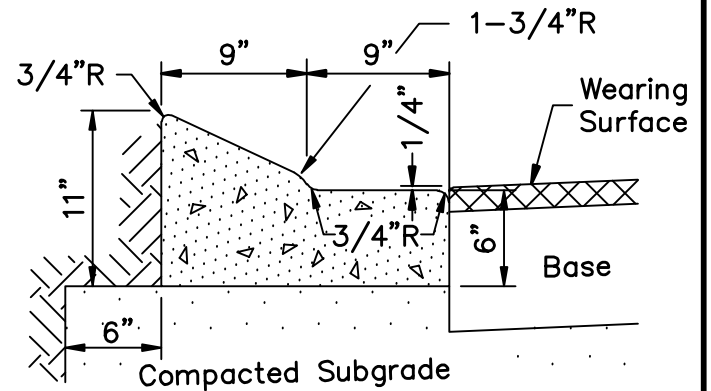
PIN / DOWELLED CURB



VALLEY GUTTER CURB

NOTES:

1. There shall be a 1/2" seal joint between back of curb and driveway.
2. Concrete in curbs shall be 3000 psi, with fiber mesh reinforcing.

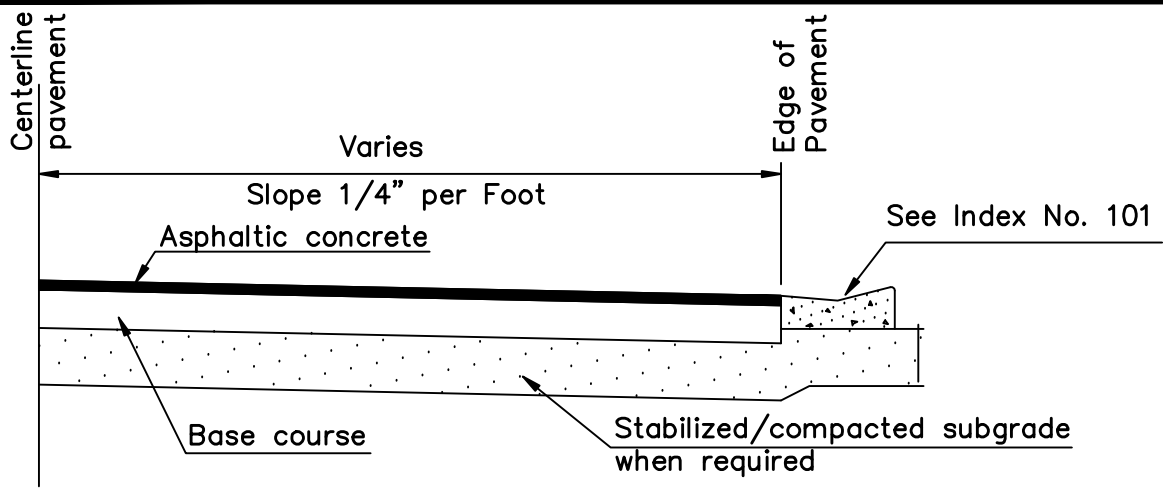


MEDIAN CURB

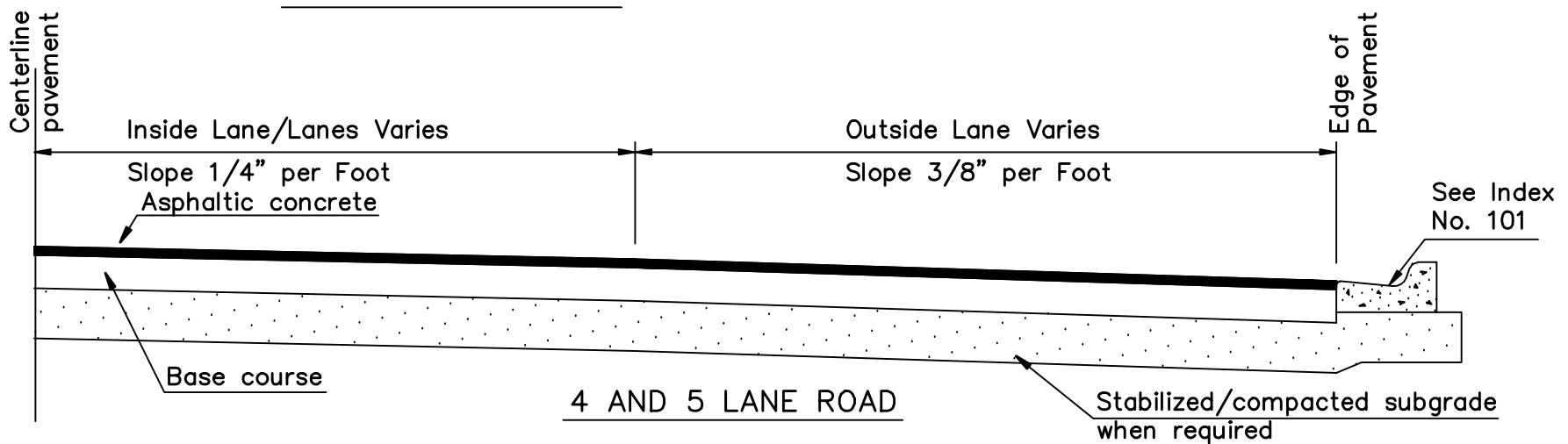
TYPICAL CURB CROSS SECTIONS

CITY INDEX NO. 101; 2 OF 2
N.T.S.

				CITY OF CLEARWATER, FLORIDA ENGINEERING DEPARTMENT		
				REDRAWN BY Novo	TYPICAL CURB	DATE 01/09
				CHECKED BY W.J.S.	CROSS-SECTIONS	INDEX NO. 101
REV.	DATE	DESCRIPTION	APP.	DESIGNED BY C.M.H.		2 OF 2



2 AND 3 LANE ROAD



4 AND 5 LANE ROAD

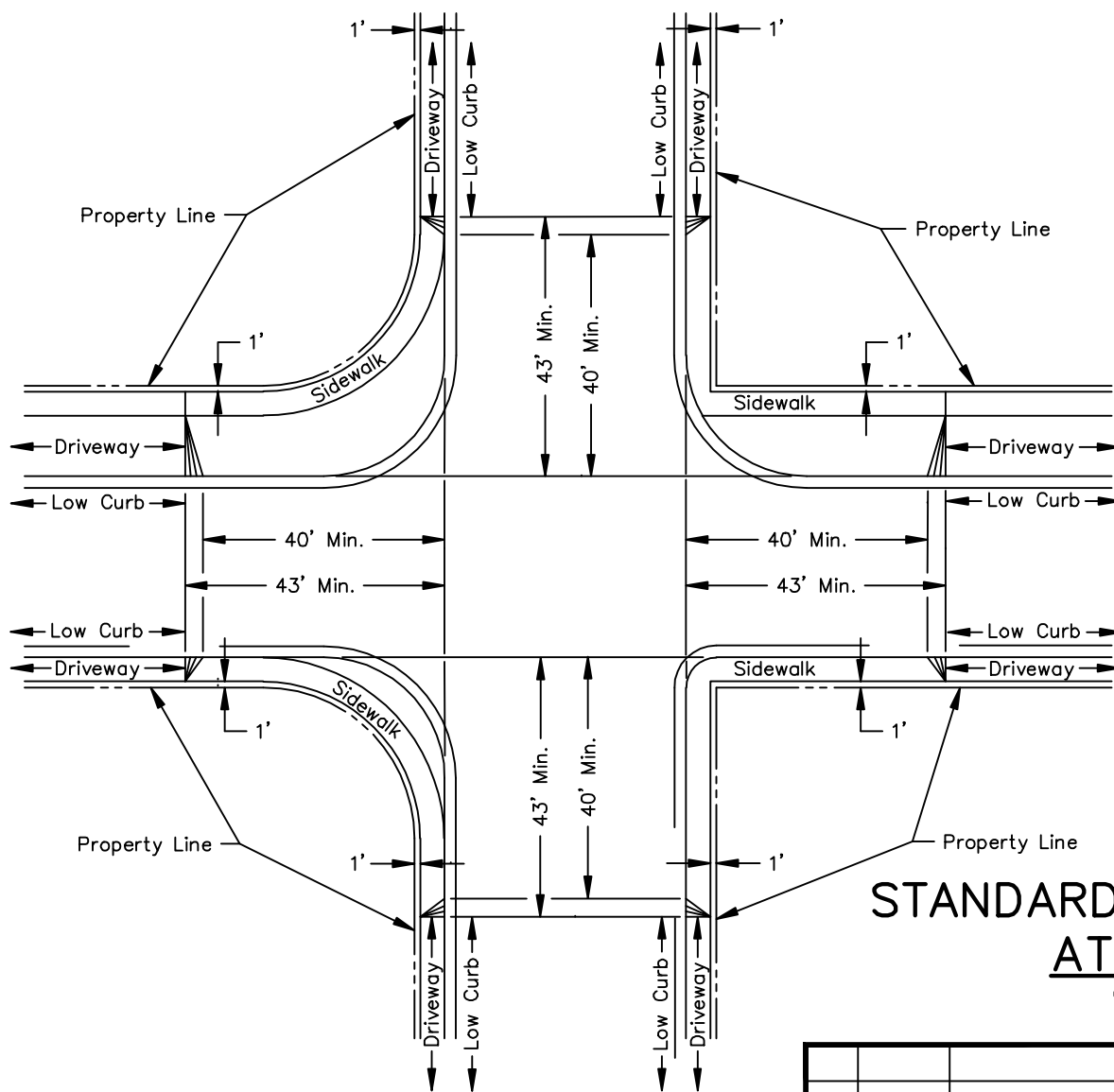
NOTES:

1. Pavement materials and thickness, and base materials and thickness will be stated in construction drawings and scope of the work.
2. See construction drawings for curb type and lane widths.

TYPICAL STREET SECTION

CITY INDEX NO. 102; 1 OF 1
N.T.S.

				CITY OF CLEARWATER, FLORIDA ENGINEERING DEPARTMENT		
				REDRAWN BY Novo	TYPICAL STREET SECTION	DATE 01/09
				CHECKED BY R.C.S.		INDEX NO. 102
REV.	DATE	DESCRIPTION	APP.	DESIGNED BY T.C.J.		1 OF 1



NOTE:

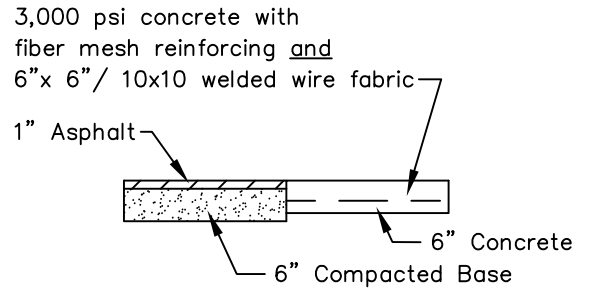
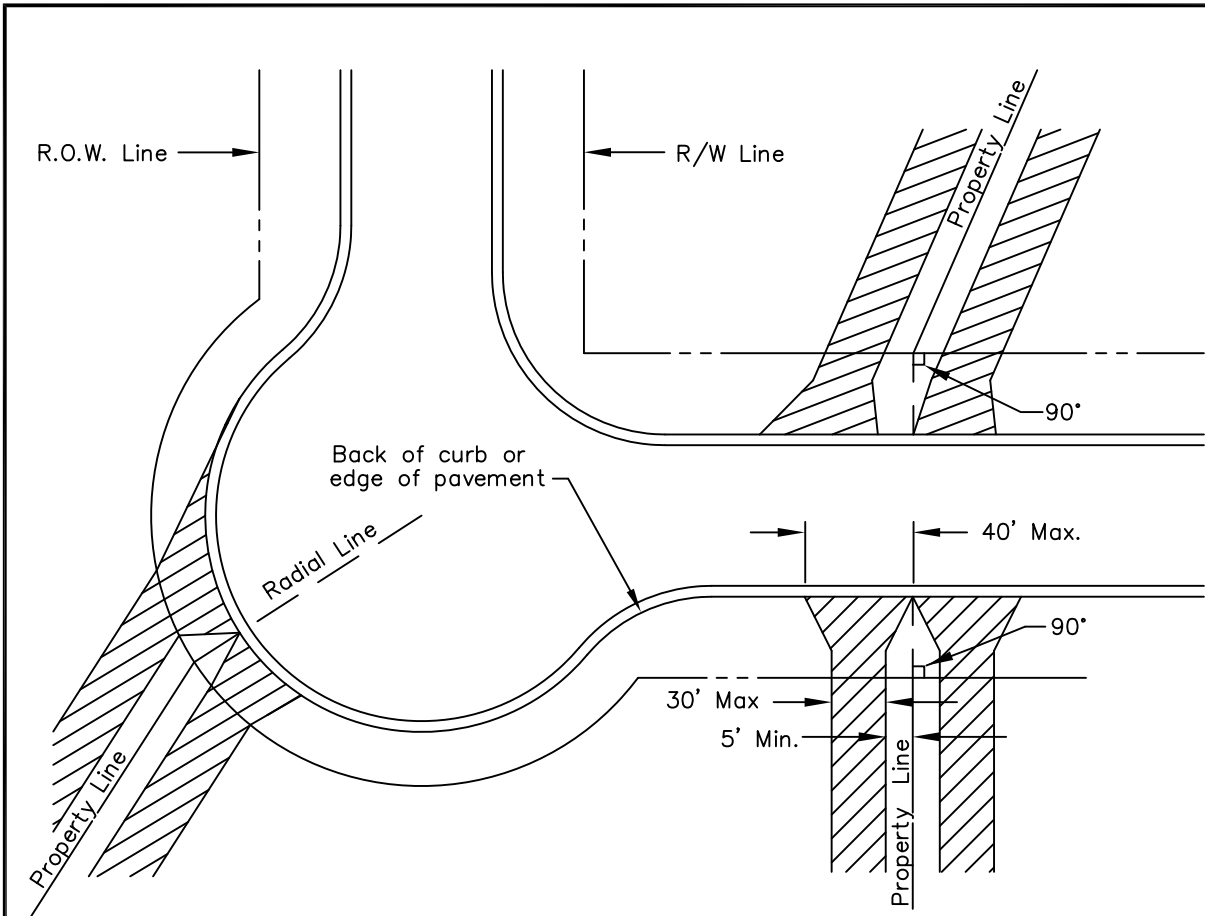
Driveways to begin a minimum of 40' measured from curb line extended or 10' from property line, whichever is greater.

▲ - Transition Area

STANDARD DRIVEWAY LOCATIONS AT INTERSECTIONS

CITY INDEX NO. 103; 1 OF 2
N.T.S.

				CITY OF CLEARWATER, FLORIDA ENGINEERING DEPARTMENT		
				REDRAWN BY RMS	STANDARD DRIVEWAY LOCATIONS AT INTERSECTIONS	DATE 01/09
				CHECKED BY RCS		INDEX NO. 103
REV.	DATE	DESCRIPTION	APP.	DESIGNED BY TCJ		1 OF 2



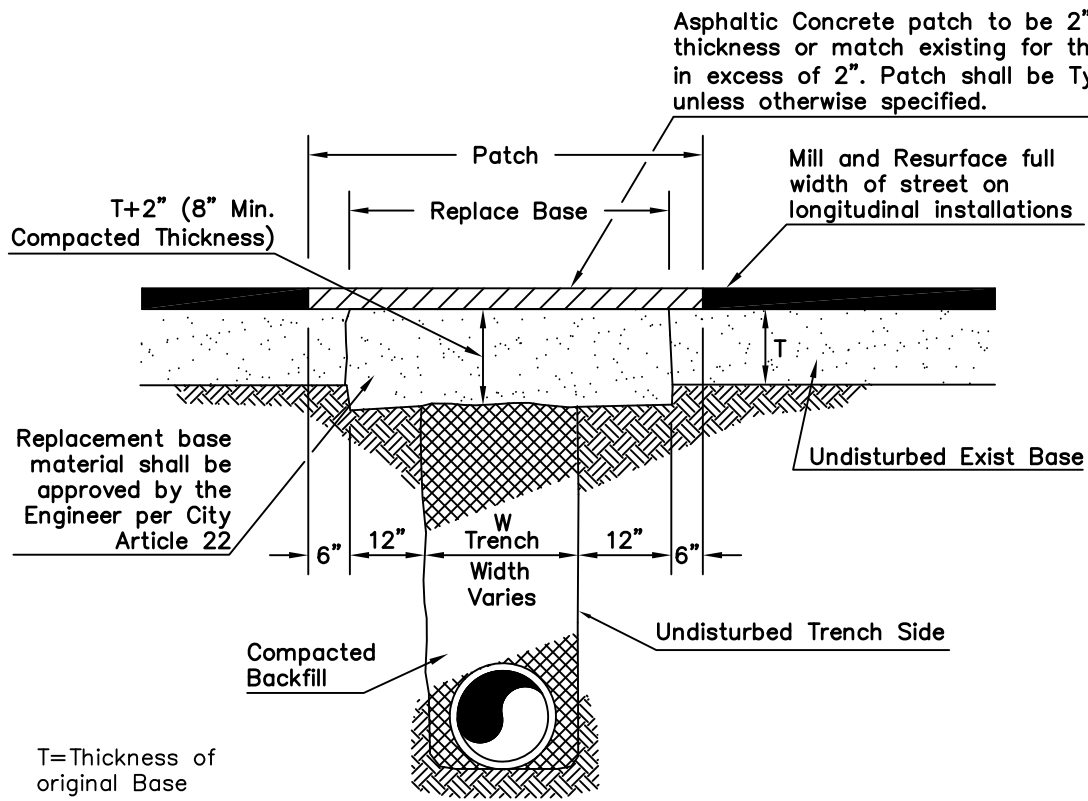
TYPICAL CROSS SECTION IN R.O.W.

NOTE:
 No driveway may be configured to result in construction in front of adjacent property as property line is extended to curb or pavement.

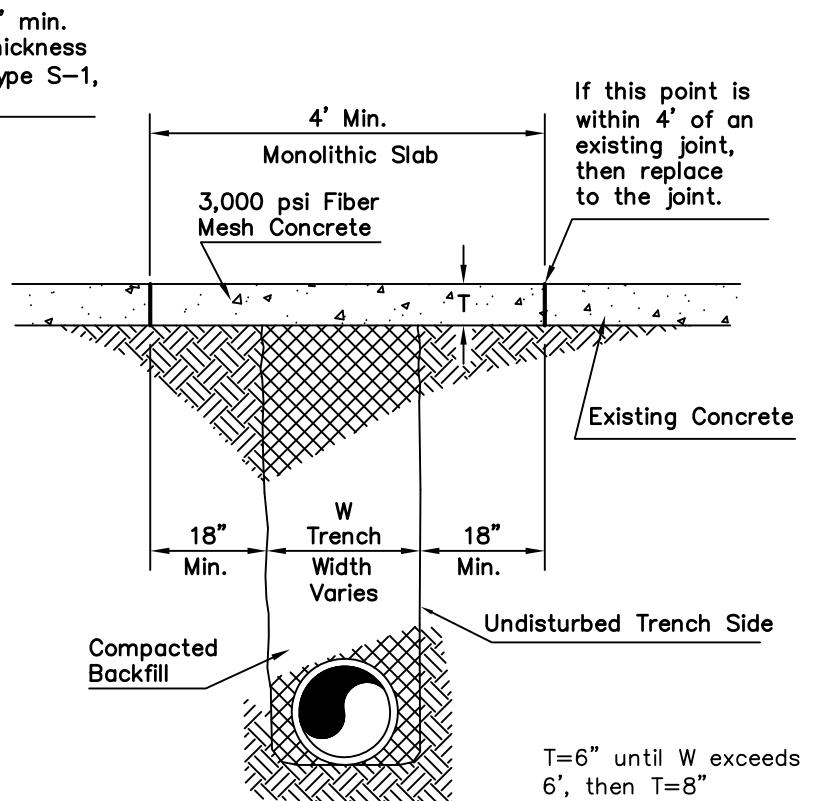
STANDARD DRIVEWAY LOCATIONS RESIDENTIAL

CITY INDEX NO. 103; 2 OF 2
 N.T.S.

				CITY OF CLEARWATER, FLORIDA ENGINEERING DEPARTMENT		
				REDRAWN BY N.E.A.	STANDARD DRIVEWAY	DATE 01/09
1	1/31/12	CONC. THICKNESS	RJM	CHECKED BY D.G.B.	LOCATIONS RESIDENTIAL	INDEX NO. 103
REV.	DATE	DESCRIPTION	APP.	DESIGNED BY W.C.B.		2 OF 2



ASPHALT STREET AND DRIVEWAY
REPLACEMENT REQUIRED FOR
UTILITY CONSTRUCTION

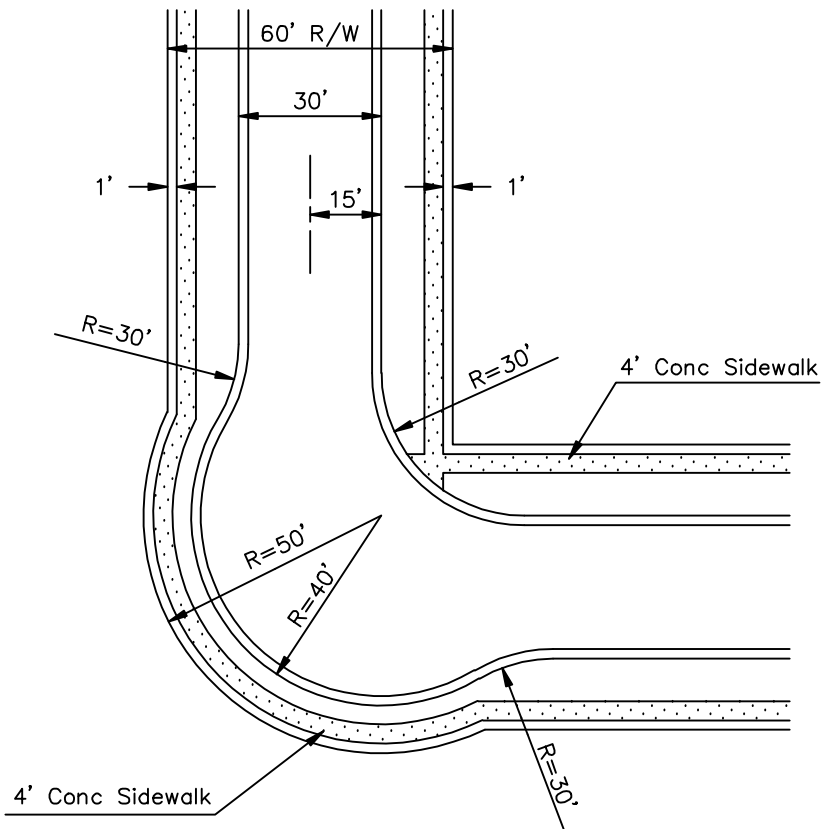


CONCRETE REPLACEMENT REQUIRED
FOR UTILITY CONSTRUCTION

STREET AND DRIVEWAY REPLACEMENT FOR CONCRETE & ASPHALTIC CONCRETE SURFACES

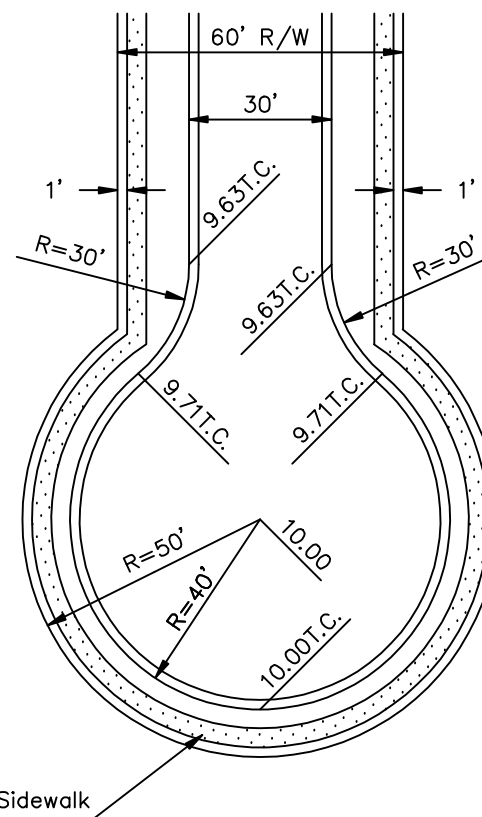
CITY INDEX NO. 104; 1 OF 1
N.T.S.

				CITY OF CLEARWATER, FLORIDA ENGINEERING DEPARTMENT		
				REDRAWN BY Novo	STREET AND DRIVEWAY REPLACEMENT FOR	DATE 01/09
1	3/17/2011	Asphaltic Concrete patch & Resurface notes	D.S.R.	CHECKED BY G.L.B.	CONCRETE & ASPHALTIC	INDEX NO. 104
REV.	DATE	DESCRIPTION	APP.	DESIGNED BY C.M.H.	CONCRETE SURFACES	1 OF 1



NOTE:

CURB ELEVATION TO BE UNIFORM GRADE FROM P.C. ELEVATION TO P.T. ELEVATION ON DOWNSTREAM SIDE



NOTE:

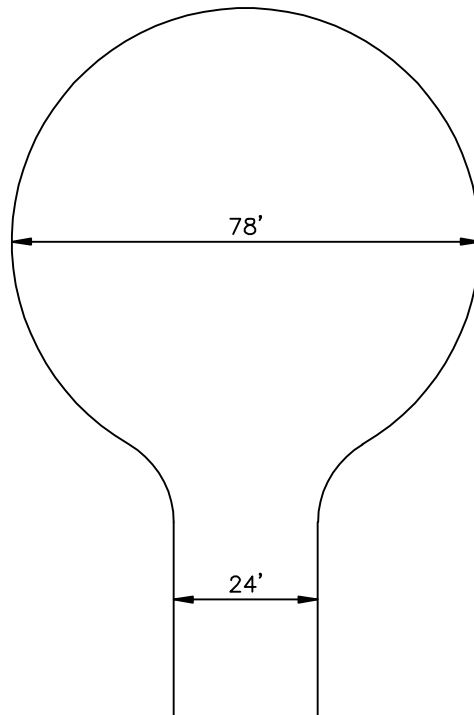
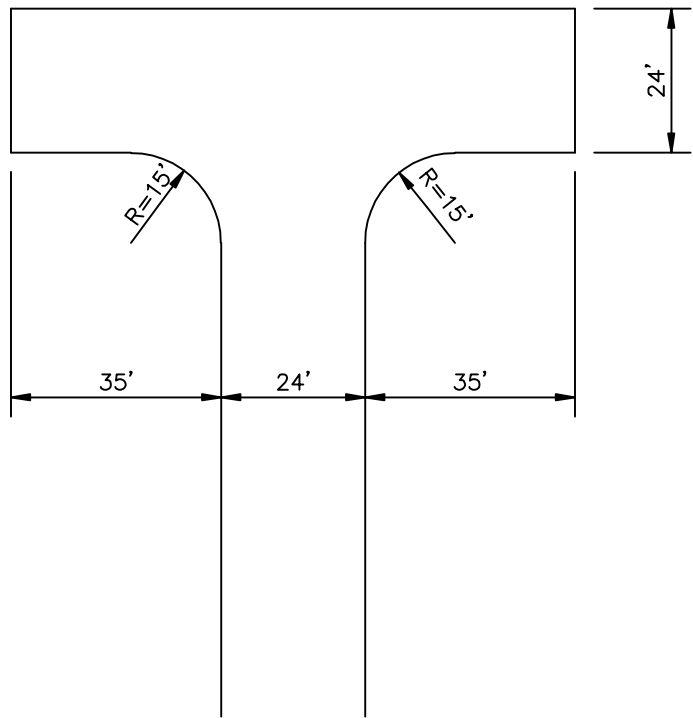
10.00T.C. = TYPICAL TOP OF CURB ELEVATION

TYPICAL TURNING RADII

CITY INDEX NO. 106; 1 OF 2

N.T.S.

				CITY OF CLEARWATER, FLORIDA ENGINEERING DEPARTMENT	
				REDRAWN BY Novo	TYPICAL TURNING RADII
				CHECKED BY G.L.B.	DATE 01/09
				DESIGNED BY M.G.B.	INDEX NO. 106
REV.	DATE	DESCRIPTION	APP.		1 OF 2



MINIMUM TURNAROUND DIMENSIONS FOR CLEARWATER SANITATION TRUCKS

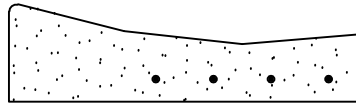
CITY INDEX NO. 106; 2 OF 2
N.T.S.

				CITY OF CLEARWATER, FLORIDA ENGINEERING DEPARTMENT		
				REDRAWN BY Novo	MINIMUM TURNAROUND	DATE 01/09
				CHECKED BY G.L.B.	DIMENSIONS FOR	INDEX NO. 106
REV.	DATE	DESCRIPTION	APP.	DESIGNED BY C.M.H.	CLEARWATER SANITATION TRUCKS	2 OF 2

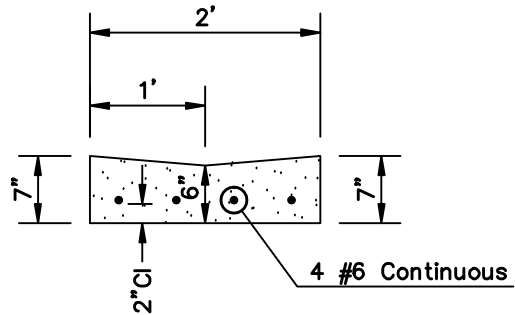


SECTION A-A

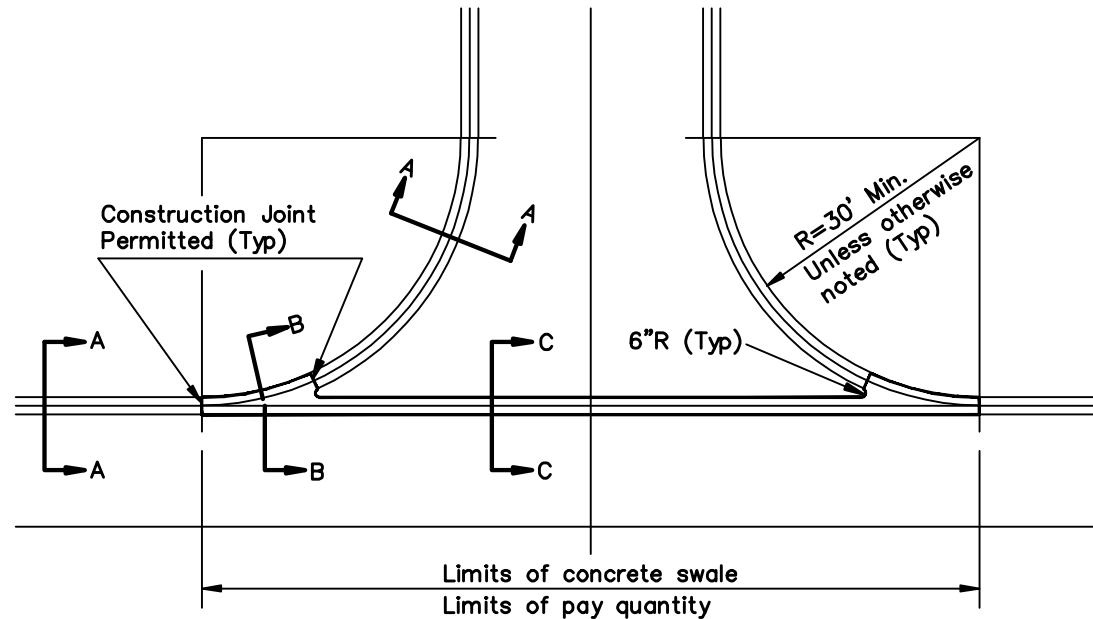
Normal Valley Gutter Curb Section
See Index 101



SECTION B-B



SECTION C-C



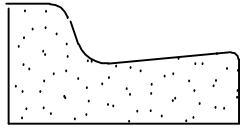
PLAN

NOTE:
Subject to City Engineer's approval.
To be used only in unique situations.

**CONCRETE SWALE
DETAIL
VALLEY GUTTER CURB**

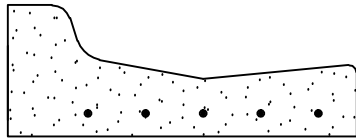
CITY INDEX NO. 107; 1 OF 1
N.T.S.

				CITY OF CLEARWATER, FLORIDA ENGINEERING DEPARTMENT		
				REDRAWN BY Novo	CONCRETE SWALE	DATE 01/09
				CHECKED BY G.L.B.	DETAIL	INDEX NO. 107
				DESIGNED BY M.G.B.	VALLEY GUTTER CURB	1 OF 1
REV.	DATE	DESCRIPTION	APP.			

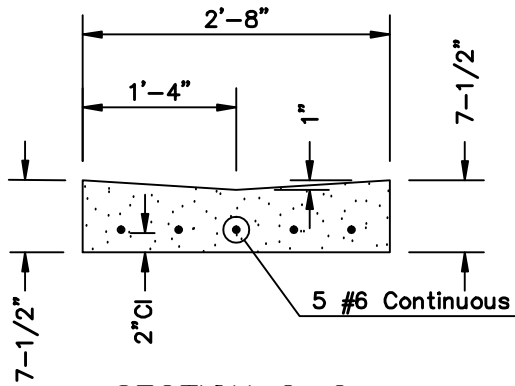


SECTION A-A

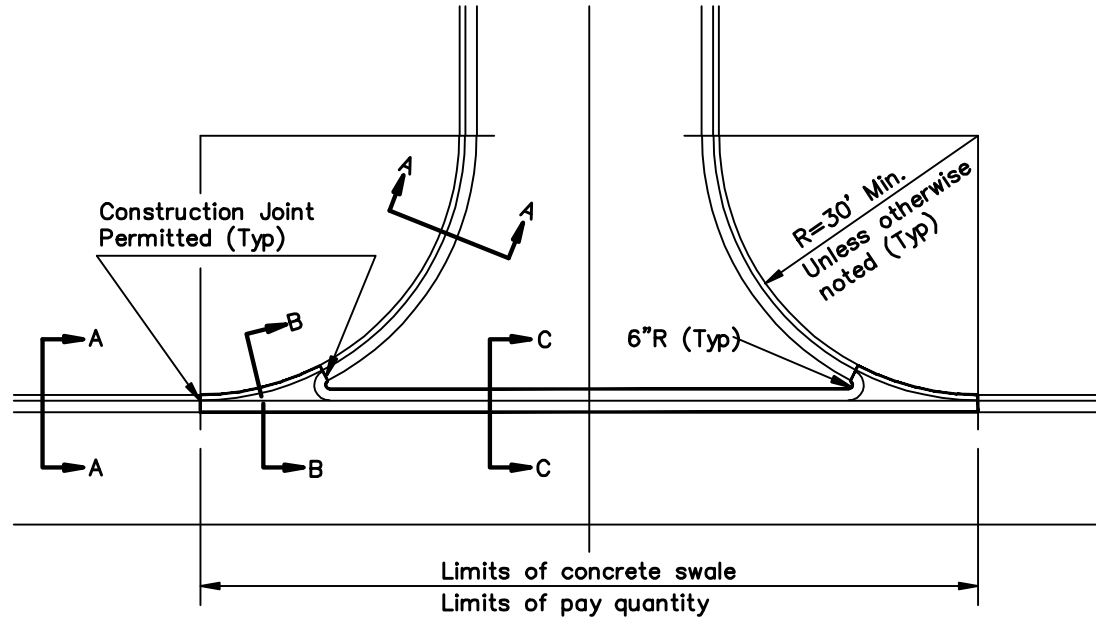
Normal Type I Curb Section
See Index 101



SECTION B-B



SECTION C-C



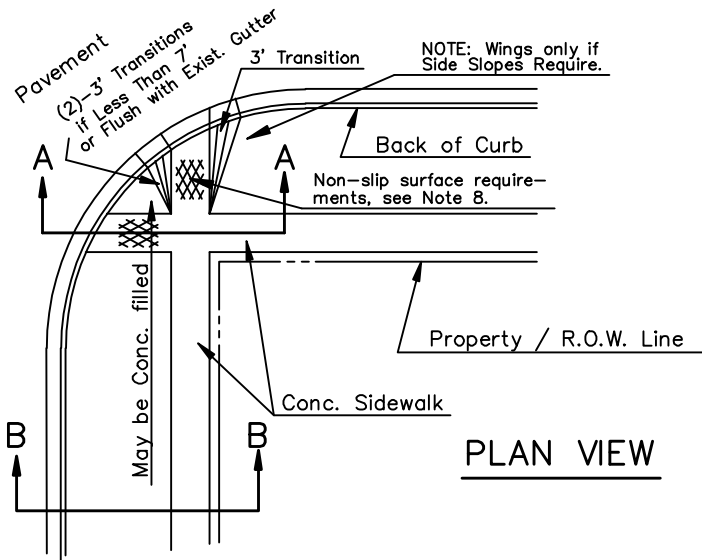
PLAN

NOTE:
Subject to City Engineer's approval.
To be used only in unique situations.

**CONCRETE SWALE
DETAIL
TYPE I CURB**

CITY INDEX NO. 108; 1 OF 1
N.T.S.

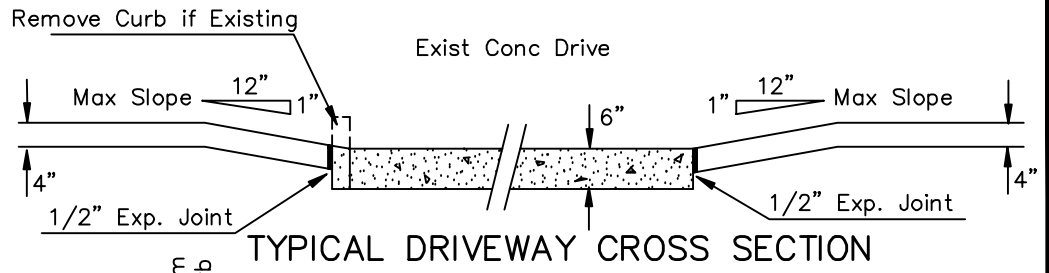
				CITY OF CLEARWATER, FLORIDA ENGINEERING DEPARTMENT		
				REDRAWN BY Novo	CONCRETE SWALE	DATE 01/09
				CHECKED BY G.L.B	DETAIL	INDEX NO. 108
				DESIGNED BY M.G.B.	TYPE I CURB	1 OF 1
REV.	DATE	DESCRIPTION	APP.			



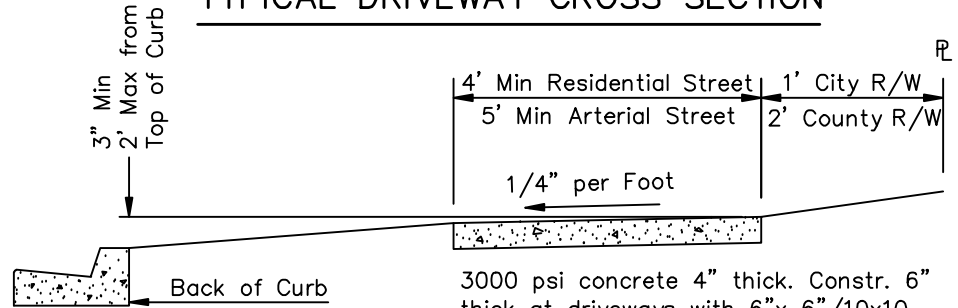
PLAN VIEW

NOTES:

1. Provide tooled joints at distances matching the width. Also place expansion joints at driveways.
2. If some physical obstruction exists which prevents the placing of sidewalks as shown, contact the Engineering Division for alternate location.
3. Wooden and other spacers will not be permitted in sidewalks or driveways.
4. No coatings of any kind will be permitted on concrete sidewalks or driveways without specific approval of the City Engineer.
5. All concrete shall be 3000 psi min. @ 28 days, with fiber mesh reinforcing.
6. Concrete surface to be light broom finish.
7. Concrete driveway construction shall be 6" thick w 6"x 6"/10x10 welded wire fabric reinforcement.
8. Ramps shall have a tactile surface, textured to a depth not exceeding 1/8" by use of tamp or roller in conformance with requirements of FDOT Roadway and Traffic Design Standards, Detail 304 or most recent modifications.

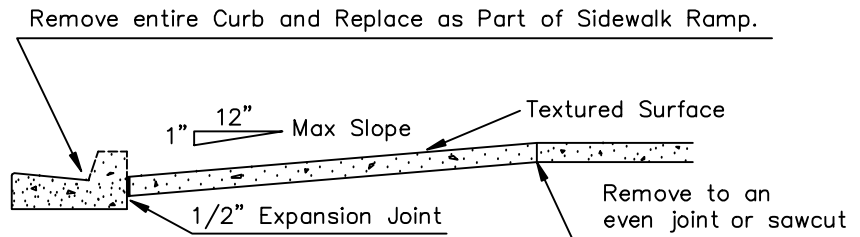


TYPICAL DRIVEWAY CROSS SECTION



SECTION B-B

3000 psi concrete 4" thick. Constr. 6" thick at driveways with 6"x 6"/10x10 welded wire fabric. (See note 7.)

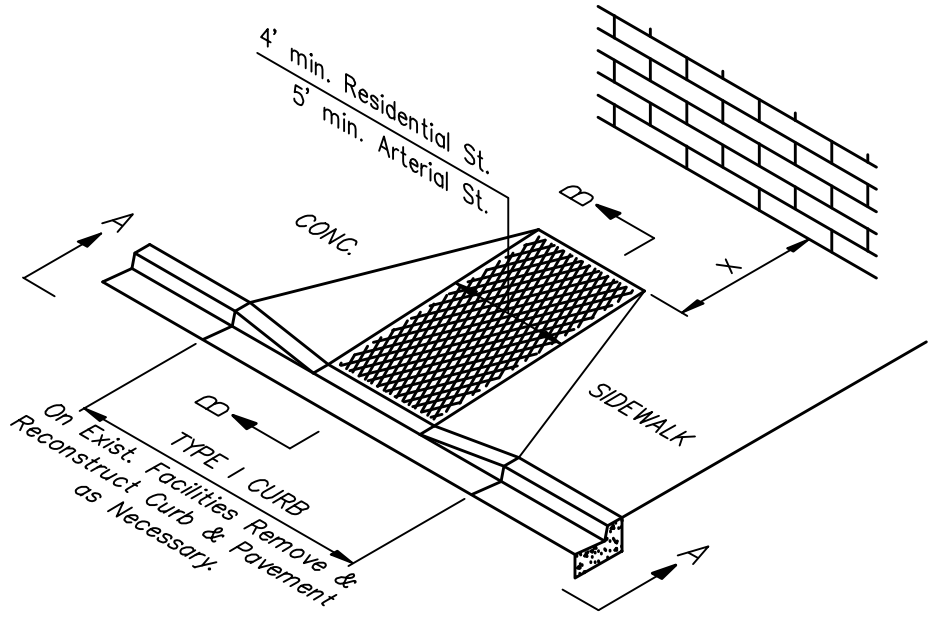


SECTION A-A

TYPICAL SIDEWALK CONSTRUCTION & RAMP DETAIL

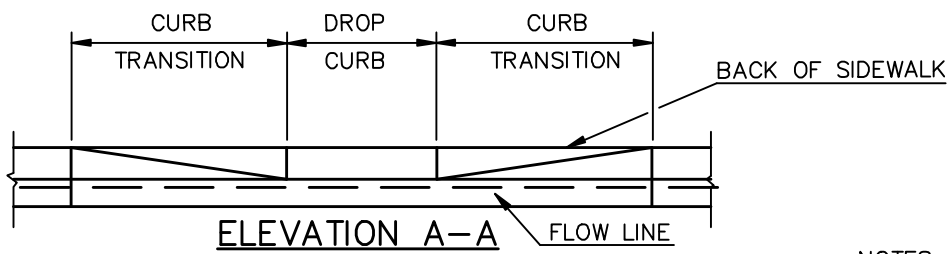
CITY INDEX NO. 109; 1 OF 3
N.T.S.

				CITY OF CLEARWATER, FLORIDA ENGINEERING DEPARTMENT		
				REDRAWN BY J.C.J.	TYPICAL SIDEWALK	DATE 01/09
				CHECKED BY T.C.J.	CONSTRUCTION AND	INDEX NO. 109
				DESIGNED BY C.M.H.	RAMP DETAIL	
REV.	DATE	DESCRIPTION	APP.	1 OF 3		



ISOMETRIC VIEW

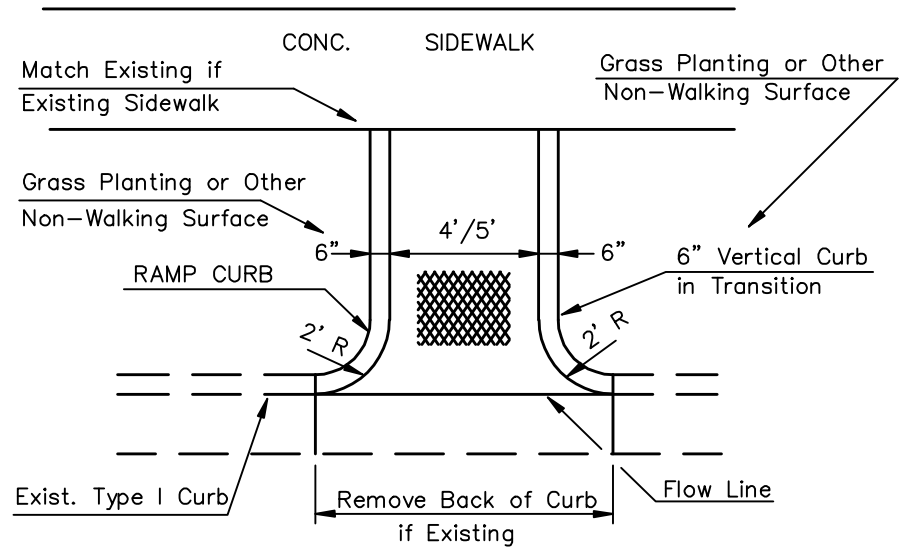
If "x" is less than 48" then the slope of the flared side shall not exceed 12:1.



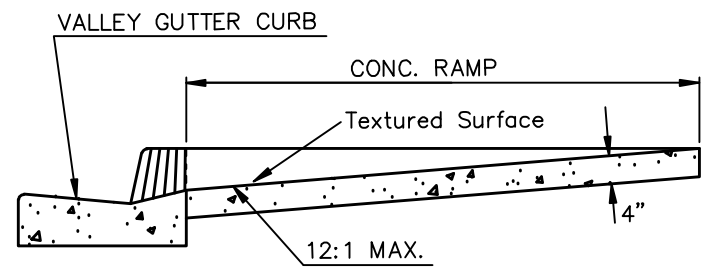
ELEVATION A-A

TYPICAL SIDEWALK CURB CUT RAMPS PHYSICALLY HANDICAPPED

CITY INDEX NO. 109; 2 OF 3
N.T.S.



RETURNED CURB RAMPS

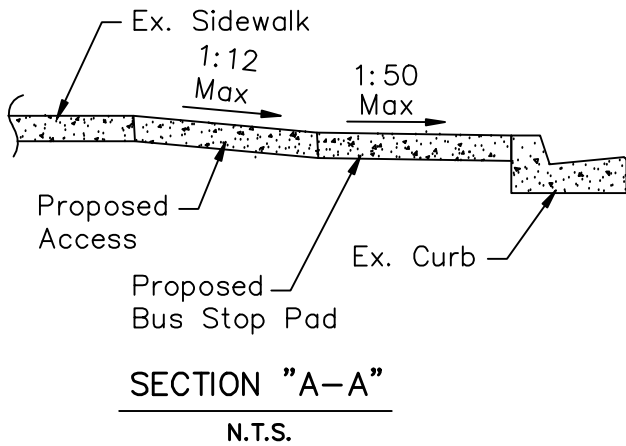


SECTION B-B

NOTES:

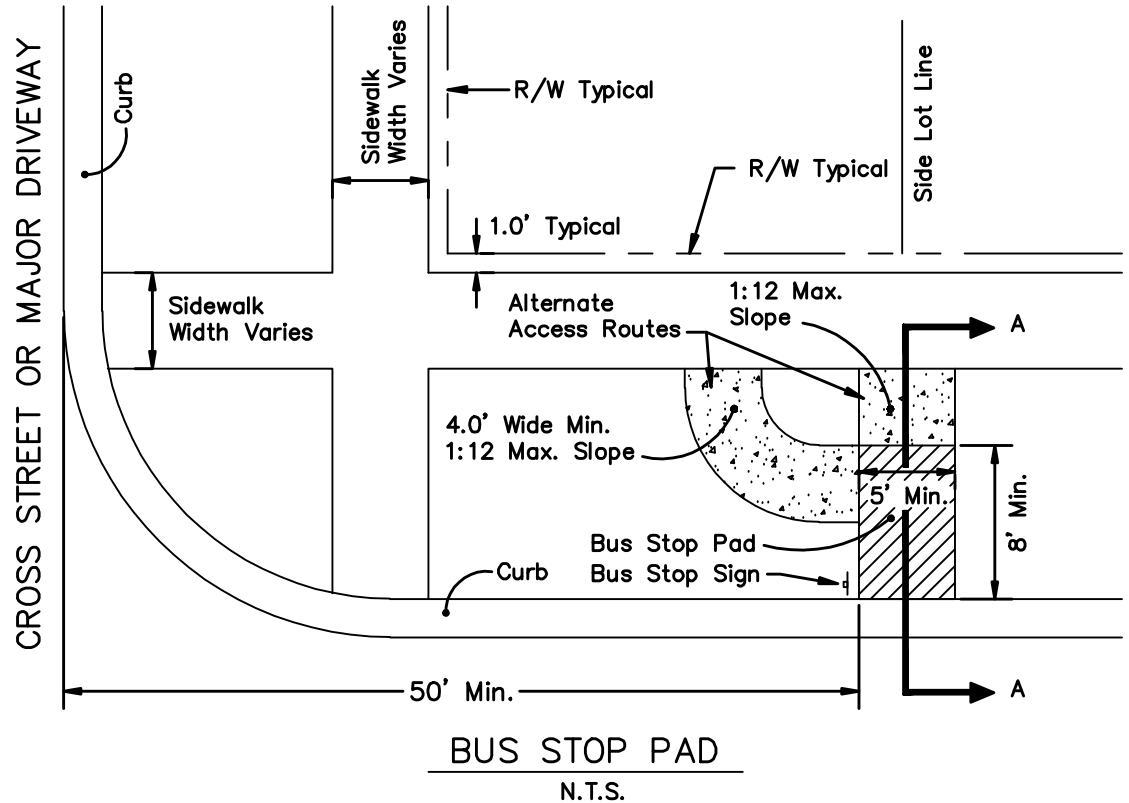
1. Ramps are designed to the Uniform Federal Accessibility Standards to comply with the Americans with Disabilities Act.
2. Ramps Shall Have a Tactile Surface, Textured to a Depth Not Exceeding 1/8" by use of Tamp or roller in Conformance with Requirements of FDOT Roadway and Traffic Design Standards, Detail 304 Or Most Recent Modifications.

				CITY OF CLEARWATER, FLORIDA ENGINEERING DEPARTMENT		
				REDRAWN BY P.W.D.	TYPICAL SIDEWALK	DATE 01/09
				CHECKED BY T.C.J.	CURB CUT RAMPS	INDEX NO. 109
				DESIGNED BY C.M.H.	PHYSICALLY HANDICAPPED	
REV.	DATE	DESCRIPTION	APP.			2 OF 3



NOTES:

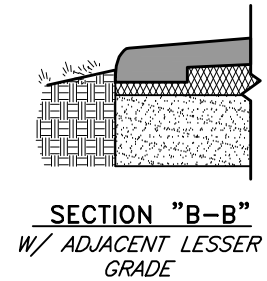
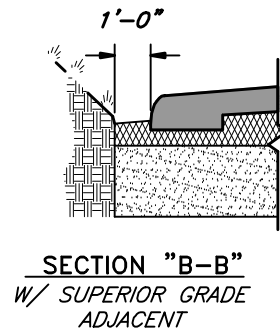
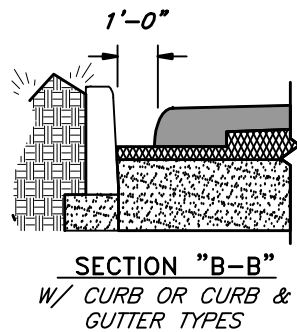
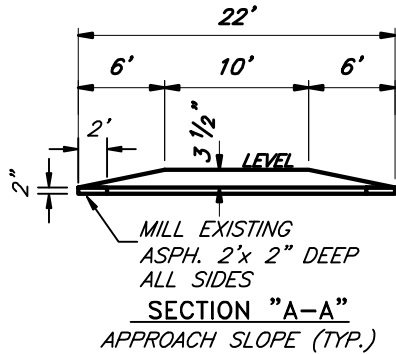
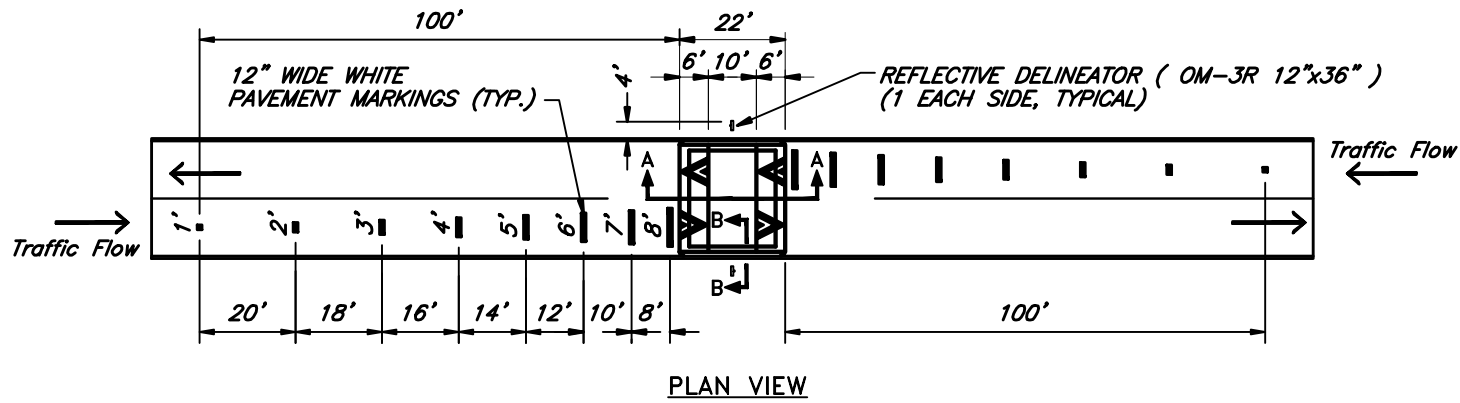
1. Bus Stop Pad may extend from existing curb to or through the alignment of existing sidewalk.
2. The Bus Stop Pad will follow the same slope and will be flush with the back of curb.
3. The maximum slope across the long dimension of the Bus Stop Pad (perpendicular to the curb) must be a maximum of 1:50. When field conditions do not allow a 1:50 slope, the minimum feasible slope shall be provided, not to exceed 1:12.
4. Paved access to the Bus Stop Pad from the sidewalk must meet City of Clearwater sidewalk standards and ADA standards with a maximum slope of 1:12 and level rest stops no more than 30 feet apart. Location of access will be field determined. Slope of parkway area adjacent to Bus Stop Pad will be field determined.
5. Bus Stop Pad shall be a minimum of 6" reinforced concrete the same as concrete driveways.
6. Bus Stop Pad shall be centered as close to lot lines as possible. Existing bus stop signs may need to be relocated accordingly.



TYPICAL BUS STOP PAD DETAIL

CITY INDEX NO. 109; 3 OF 3
N.T.S.

REV.	DATE	DESCRIPTION	APP.	CITY OF CLEARWATER, FLORIDA ENGINEERING DEPARTMENT		
				REDRAWN BY T.L.M.	TYPICAL BUS STOP	DATE 01/09
				CHECKED BY W.J.S.	PAD DETAIL	INDEX NO. 109
				DESIGNED BY T.C.J.		3 OF 3



SPEED TABLE SIGNS & DETAILS

FIGURE 1

CITY INDEX NO. 110; 1 OF 2
N.T.S.

REV.	DATE	DESCRIPTION	APP.	CITY OF CLEARWATER, FLORIDA ENGINEERING DEPARTMENT		
				REDRAWN BY E.A.	SPEED TABLE SIGNS & DETAILS FIG. 1	DATE 01/09
				CHECKED BY M.Q.		INDEX NO. 110
				DESIGNED BY M.G.		1 OF 2

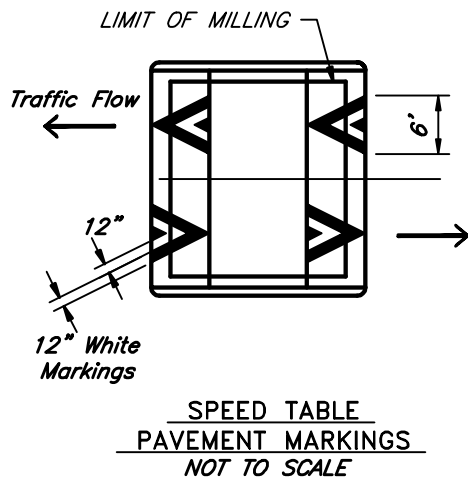
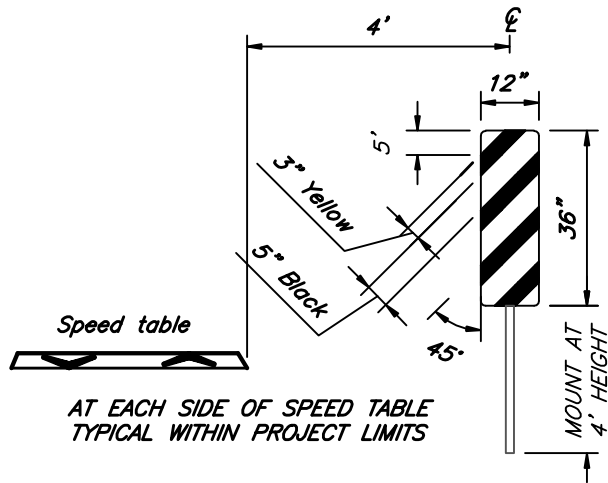


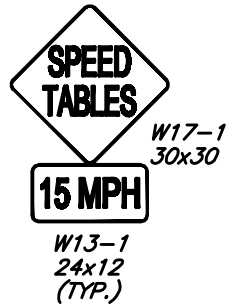
FIG. 2



REFLECTIVE DELINEATOR MARKER "OM-3R"
NOT TO SCALE

(REF. MANUAL OF UNIFORM CONTROL DEVICES 3C-2
TYPICAL TYPE 3 OBJECT MARKERS)

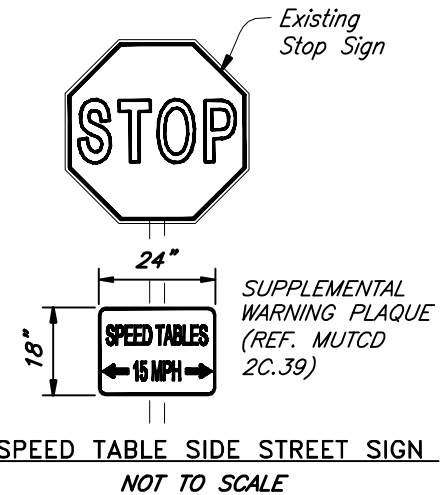
FIG. 5 (OPTIONAL)



SPEED TABLE WARNING SIGN (TYP.)
NOT TO SCALE

INSTALL 1- SIGN 100' FROM EACH
COLLECTOR OR ARTERIAL ROAD WITHIN
THE PROJECT LIMITS OF THE SPEED
TABLES.

FIG. 3

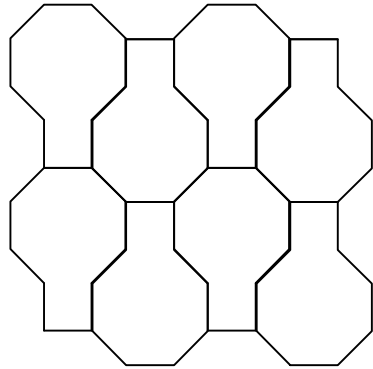


FOR SIDE STREETS WITHIN
PROJECT LIMITS OF SPEED TABLES

FIG. 4 (OPTIONAL)

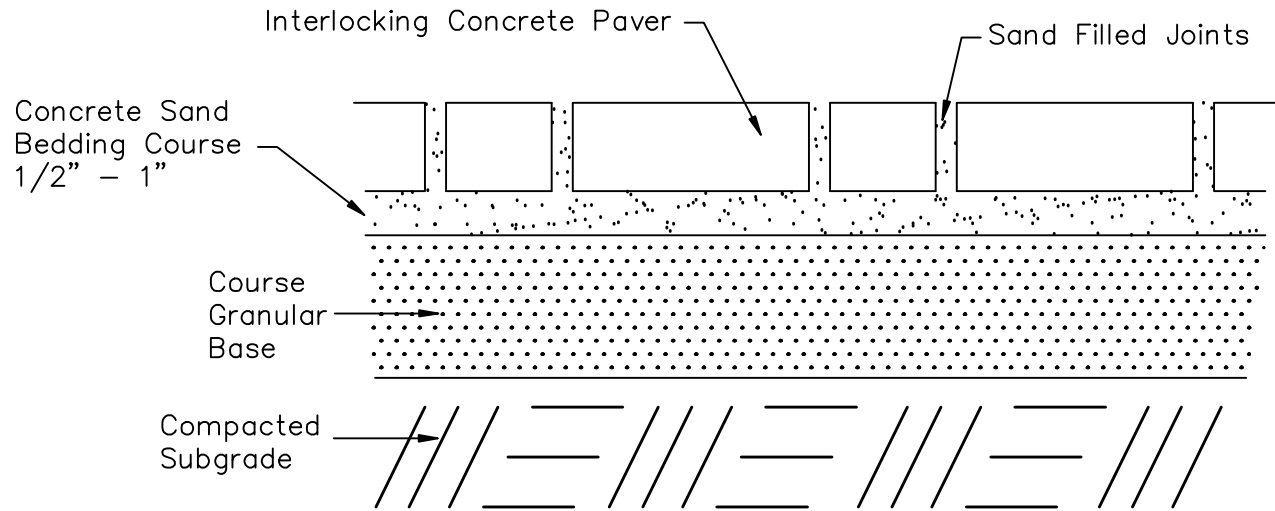
SPEED TABLE SIGNS & DETAILS
FIGURE 2-5

REV.	DATE	DESCRIPTION	APP.	CITY OF CLEARWATER, FLORIDA ENGINEERING DEPARTMENT		
				REDRAWN BY E.A.	SPEED TABLE SIGNS & DETAILS FIG.2-5	DATE 01/09
				CHECKED BY M.Q.		INDEX NO. 110
				DESIGNED BY M.G.		2 OF 2



INSTALLATION PATTERN

(Pattern will vary with selected paver)



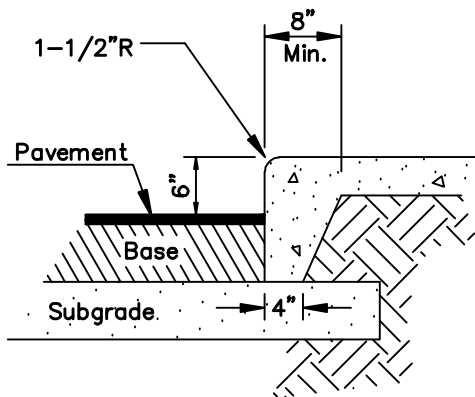
TYPICAL CROSS SECTION

1. Interlocking paving units shall generally be installed in accordance with manufactures requirements.
2. Paver Thickness: 2 3/8" Residential, Light Duty Traffic; 3 1/8" Commercial, Heavy Duty Traffic
3. Concrete Pavers to conform to ASTM C936-82.
4. Course Granular Base shall be in accordance with manufactures requirements (4" min. for 2 3/8" pavers and 8" min. for 3 1/8" pavers). Granular base shall be crushed concrete or other material approved by City Engineer.
5. Coloring or dye shall be uniform throughout each concrete paver unit. Dipped or externally colored paver units are unacceptable.
6. Pavers shall be installed with edge restraint and confined with cemented paver units, curbs, poured concrete or other suitable method.
7. Final finished surface shall be of uniform elevation or slope.
8. Subgrade shall be free of clay, organics, or other materials which will allow future settlement and compacted to 98% AASHTO T-180-57.

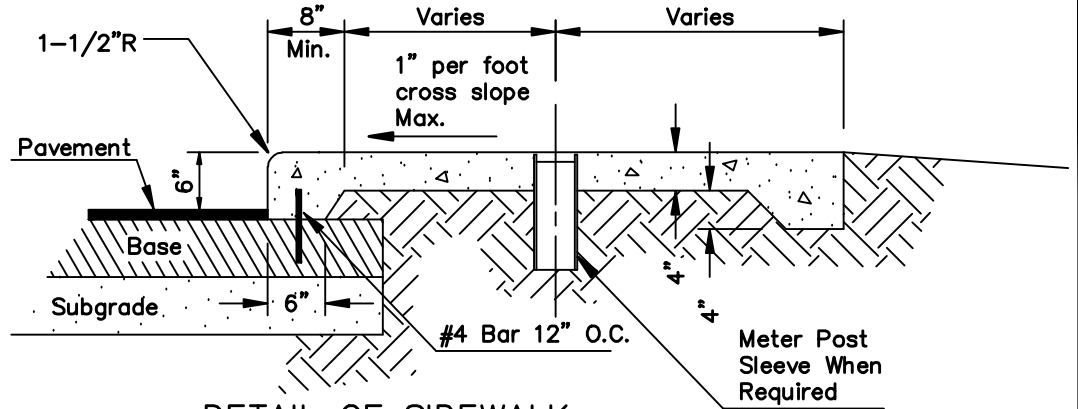
INTERLOCKING CONCRETE BLOCK PAVERS

CITY INDEX NO. 113; 1 OF 1
N.T.S.

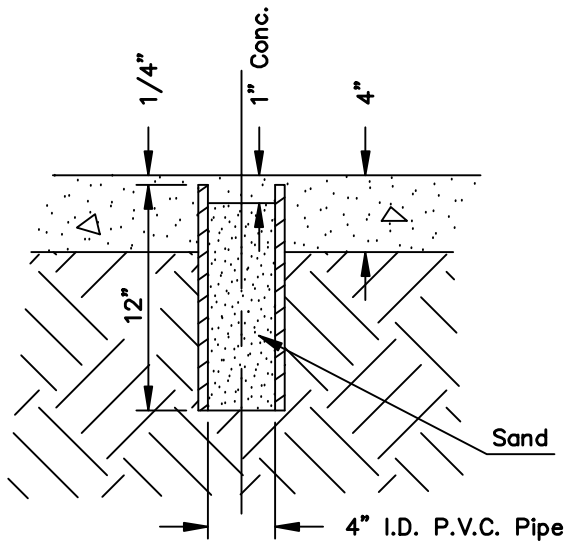
				CITY OF CLEARWATER, FLORIDA ENGINEERING DEPARTMENT		
				REDRAWN BY E.A.	INTERLOCKING CONCRETE	DATE 01/09
				CHECKED BY GCH	BLOCK PAVERS	INDEX NO. 113
REV.	DATE	DESCRIPTION	APP.	DESIGNED BY TCJ		1 OF 1



DETAIL CONSTRUCTION ALTERNATE



DETAIL OF SIDEWALK
PARKING ONE SIDE ONLY



PARKING METER POST
SLEEVE DETAIL

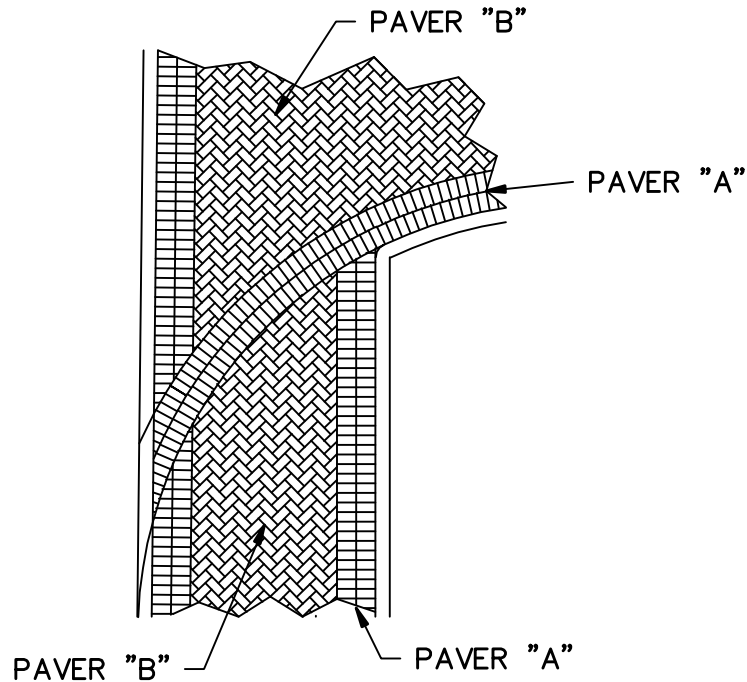
NOTES:

1. Meter post sleeve shall be 4" i.d. P.V.C. cut to 12" lengths.
2. Contractor shall select method of construction. There shall be no variation of unit price bids.
3. Meter post locations shall be marked by an "x" in the concrete.
4. Concrete to be 3,000 P.S.I., with fiber mesh reinforcing.

**CONCRETE SIDEWALKS
& METER POSTS
IN PARKING LOTS**

CITY INDEX NO. 114; 1 OF 1
N.T.S.

				CITY OF CLEARWATER, FLORIDA ENGINEERING DEPARTMENT		
				REDRAWN BY Novo	CONCRETE SIDEWALKS	DATE 01/09
				CHECKED BY G.L.B.	& METER POSTS	INDEX NO. 114
				DESIGNED BY C.M.H.	IN PARKING LOTS	
REV.	DATE	DESCRIPTION	APP.			1 OF 1



PAVER "A"

SYTLE: "PLAZA" 4'x8"x2 3/8" CONCRETE PAVER
 MANUFACTURER: PAVERMODULE (954-972-7400)
 COLOR: 3 COLOR BLEND (ORANGE, SAND, BUFF)
 APPROVED BY LANDSCAPE ARCHITECT
 PATTERN: DOUBLE ROW BORDER

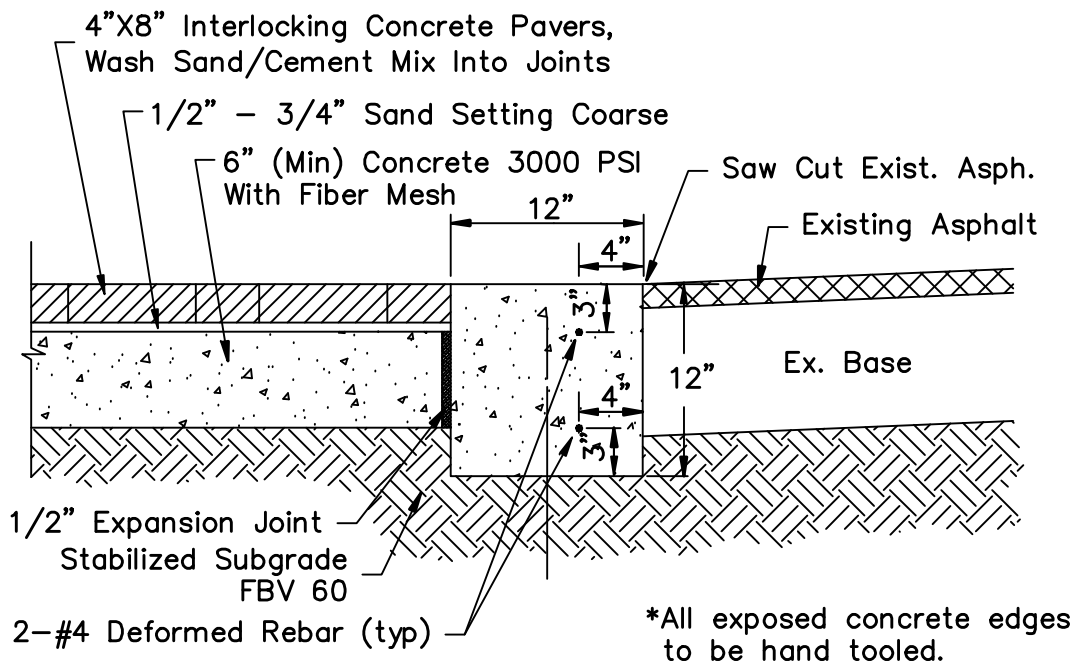
PAVER "B"

SYTLE: "PLAZA" 4'x8"x2 3/8" CONCRETE PAVER
 MANUFACTURER: PAVERMODULE (954-972-7400)
 COLOR: 3 COLOR BLEND (ORANGE, TAN, BUFF)
 APPROVED BY LANDSCAPE ARCHITECT
 PATTERN: HERRINGBONE FIELD

TYPICAL BRICK PAVER PATTERN

CITY INDEX NO. 115; 1 OF 1
 N.T.S.

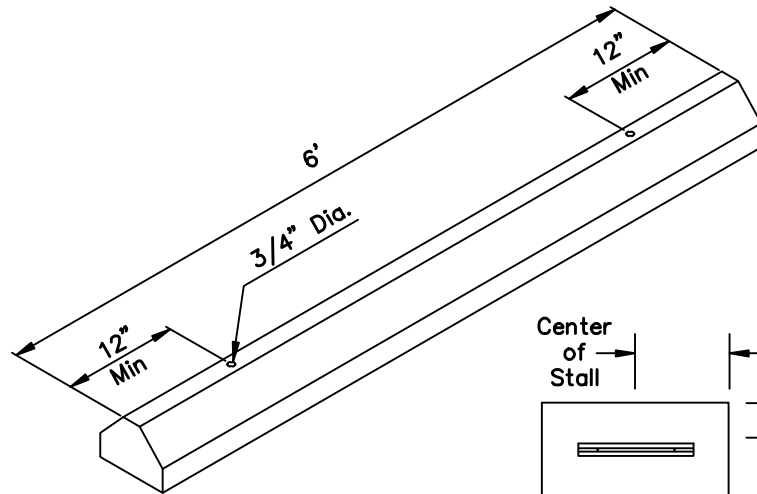
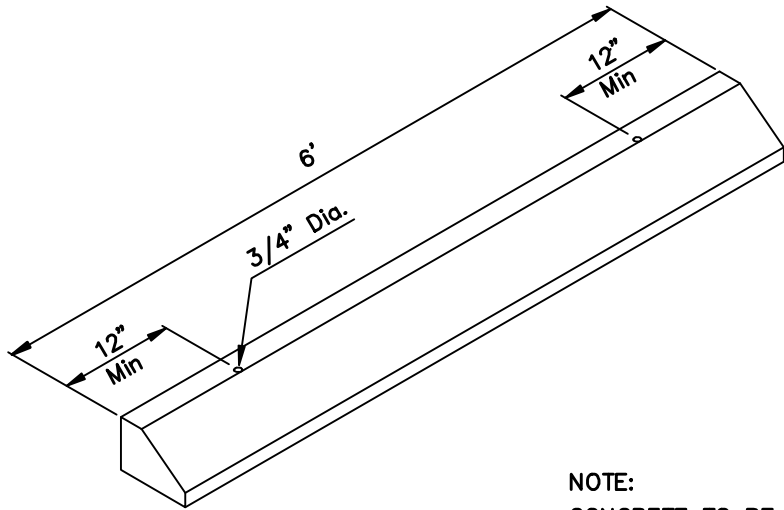
				CITY OF CLEARWATER, FLORIDA ENGINEERING DEPARTMENT		
				REDRAWN BY A.C.	TYPICAL BRICK	DATE 01/09
				CHECKED BY M.Q.	PAVER PATTERN	INDEX NO. 115
REV.	DATE	DESCRIPTION	APP.	DESIGNED BY M.G.		1 OF 1



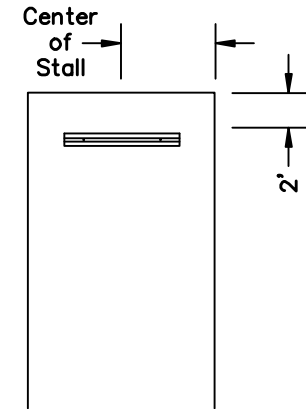
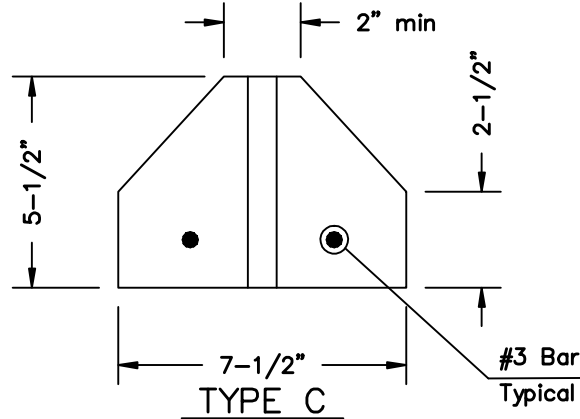
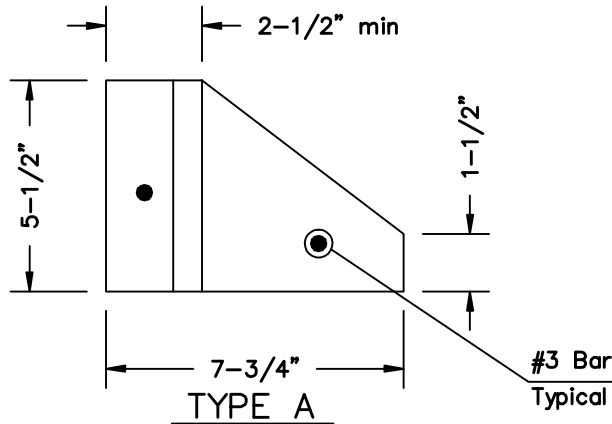
PAVING HEADER & BRICK PAVER DETAIL

CITY INDEX NO. 116; 1 OF 1
N.T.S.

				CITY OF CLEARWATER, FLORIDA ENGINEERING DEPARTMENT		
				REDRAWN BY A.C.	PAVING HEADER &	DATE 01/09
				CHECKED BY M.Q.	BRICK PAVER DETAIL	INDEX NO. 116
REV.	DATE	DESCRIPTION	APP.	DESIGNED BY A.C.		1 OF 1



NOTE:
CONCRETE TO BE 3,000 PSI, WITH FIBER MESH REINFORCING.



NOTES:

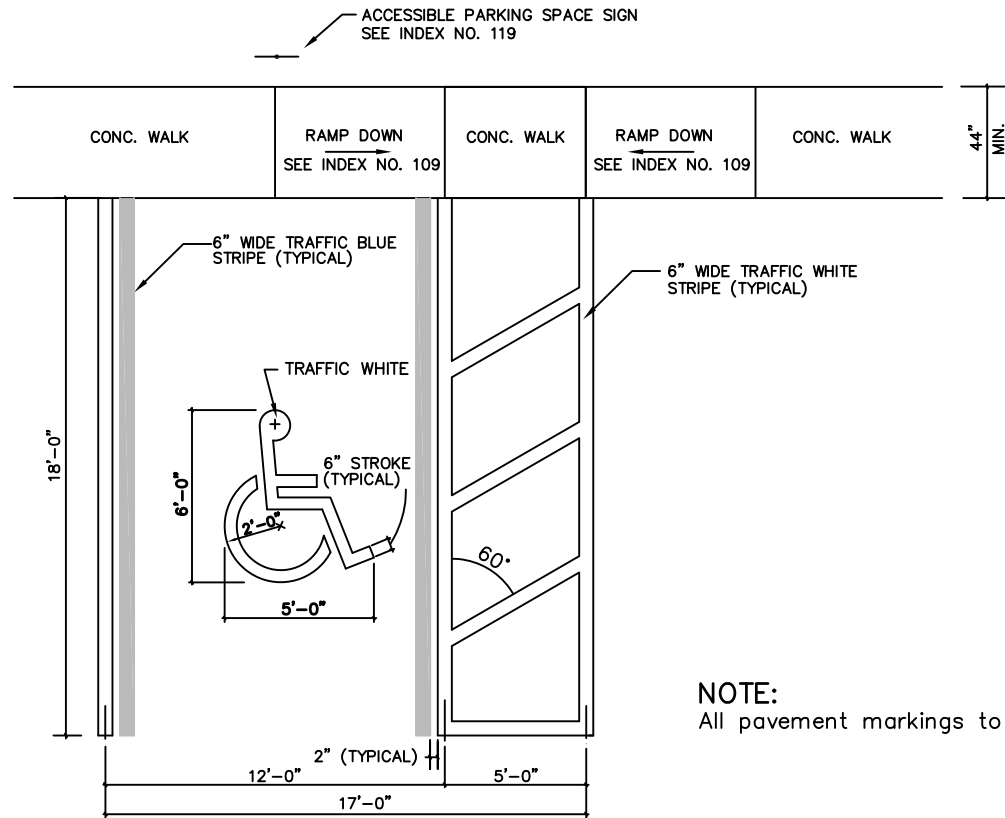
1. WHEEL STOPS TO BE PLACED 2' BACK, AS SHOWN ABOVE. CENTERED IN THE PARKING STALL
2. WHEEL STOPS CAN BE PAINTED IN A CONTRASTING COLOR SUCH AS GRAY, YELLOW OR BLACK. BLUE SHALL BE USED FOR HANDICAP PARKING STALLS.

WHEEL STOPS REINFORCED CONCRETE

CITY INDEX NO. 117; 1 OF 1

N.T.S.

REV.	DATE	DESCRIPTION	APP.	CITY OF CLEARWATER, FLORIDA ENGINEERING DEPARTMENT		
				REDRAWN BY Novo	WHEEL STOPS	DATE 01/09
				CHECKED BY G.L.B.	REINFORCED CONCRETE	INDEX NO. 117
				DESIGNED BY R.C.S.		1 OF 1

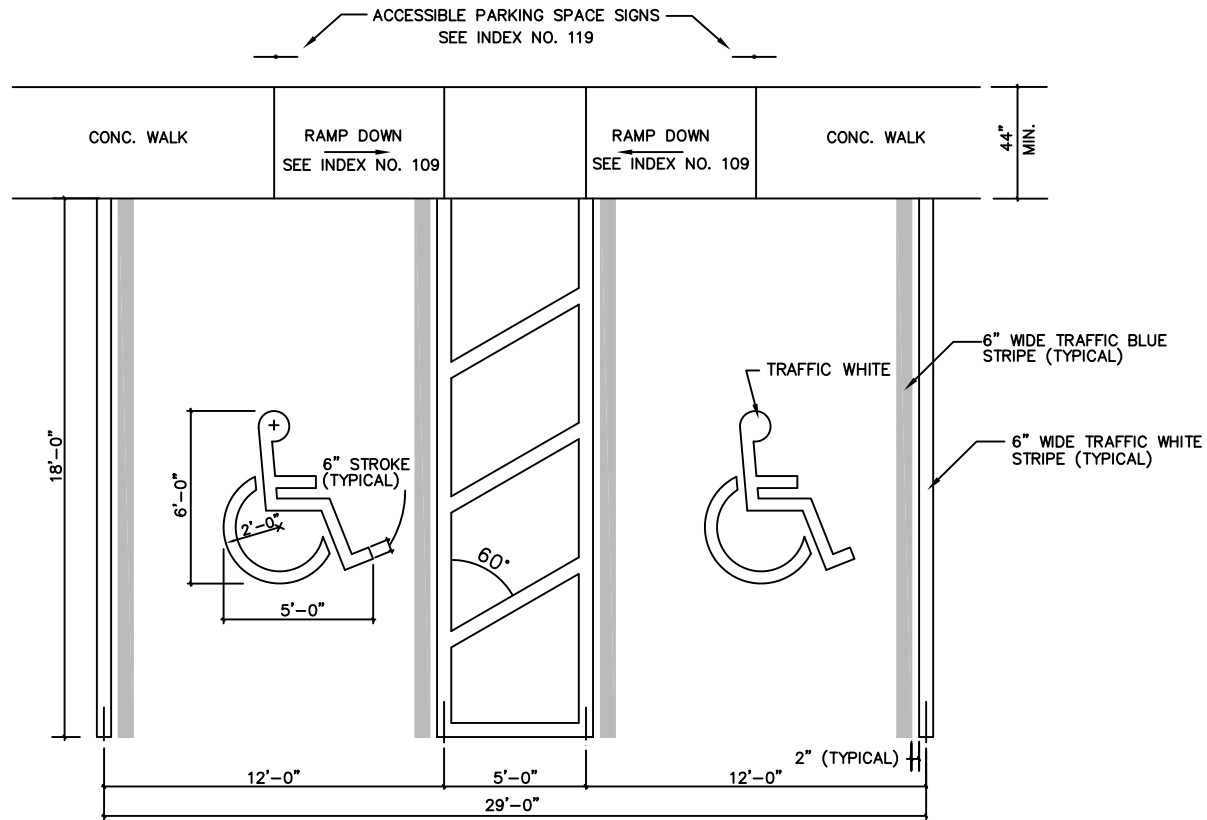


NOTE:
All pavement markings to be thermoplastic.

TYPICAL SINGLE ACCESSIBLE PARKING STALL

CITY INDEX NO. 118; 1 OF 2
N.T.S.

CITY OF CLEARWATER, FLORIDA ENGINEERING DEPARTMENT						
2	2/15/12	CHANGE DETAIL TITLE	H.P.	REDRAWN BY N.E.A.	TYPICAL SINGLE ACCESSIBLE PARKING STALL	DATE 12/10
1	12/10	ADDITIONAL RAMP	H.P.	CHECKED BY M.Q.		INDEX NO. 118
REV.	DATE	DESCRIPTION	APP.	DESIGNED BY M.G.		1 OF 2

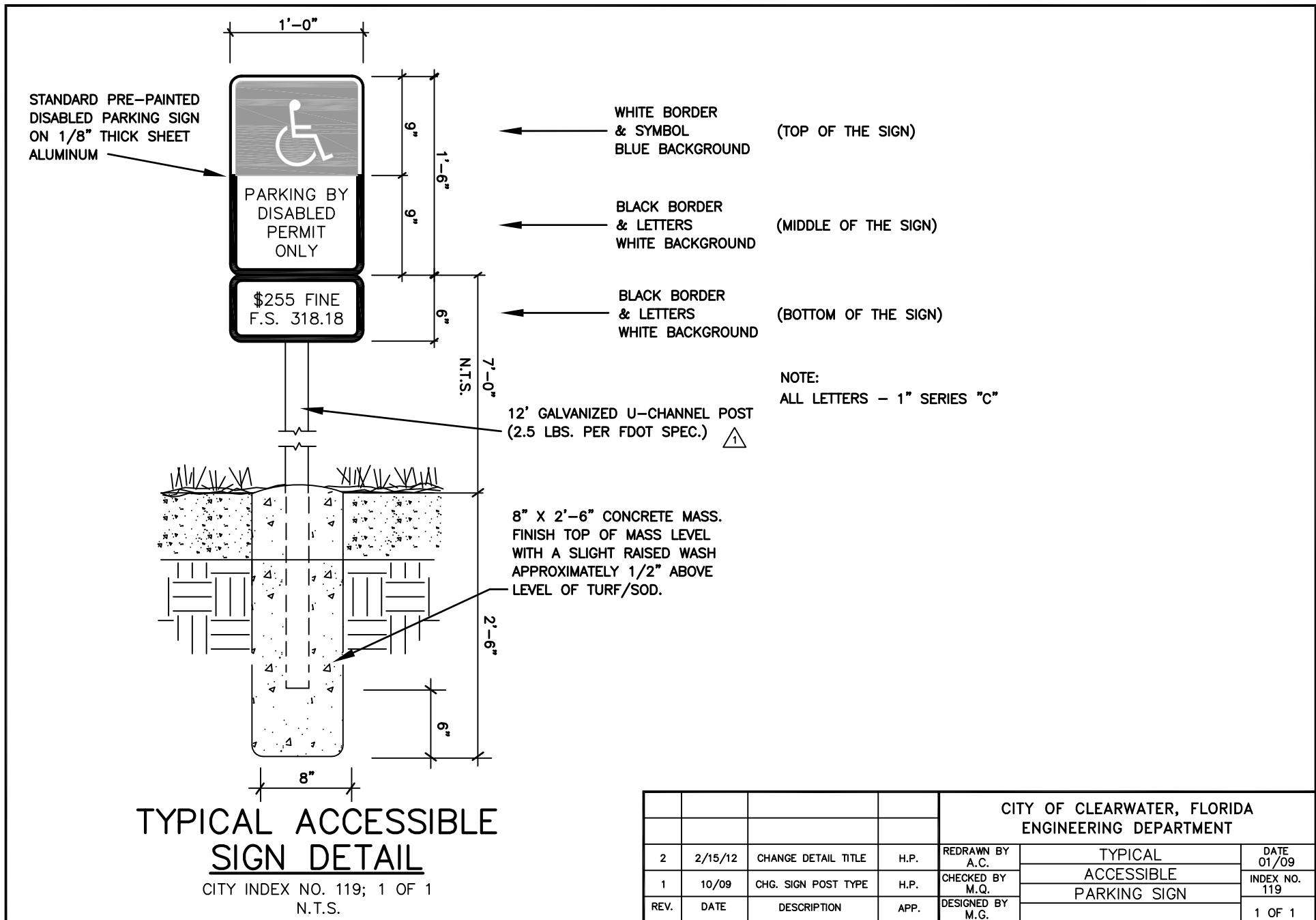


NOTE:
All pavement markings to be thermoplastic.

TYPICAL DOUBLE ACCESSIBLE PARKING STALL

CITY INDEX NO. 118; 2 OF 2
N.T.S.

CITY OF CLEARWATER, FLORIDA ENGINEERING DEPARTMENT						
				REDRAWN BY A.C.	TYPICAL DOUBLE	DATE 01/09
1	2/15/12	CHANGE DETAIL TITLE	H.P.	CHECKED BY M.Q.	ACCESSIBLE	INDEX NO. 118
REV.	DATE	DESCRIPTION	APP.	DESIGNED BY M.G.	PARKING STALL	2 OF 2



				CITY OF CLEARWATER, FLORIDA ENGINEERING DEPARTMENT		
2	2/15/12	CHANGE DETAIL TITLE	H.P.	REDRAWN BY A.C.	TYPICAL	DATE 01/09
1	10/09	CHG. SIGN POST TYPE	H.P.	CHECKED BY M.Q.	ACCESSIBLE	INDEX NO. 119
REV.	DATE	DESCRIPTION	APP.	DESIGNED BY M.G.	PARKING SIGN	1 OF 1

A	B	C	D	E	F
0	8.0	8.0	12.0	23.0	28.0
45	9.0	19.5	13.0	12.7	52.0
50	9.0	20.0	14.0	11.7	54.0
60	9.0	20.5	18.0	10.4	59.0
70	9.0	20.0	19.0	9.6	59.0
80	9.0	19.5	24.0	9.1	63.0
90	9.0	18.0	24.0	9.0	60.0

- A. PARKING ANGLE (DEGREES)
- B. STALL WIDTH (FEET)
- C. STALL TO CURB (FEET)
- D. AISLE WIDTH (FEET)
- E. CURB LENGTH (FEET)
- F. MIN. OVERALL DOUBLE ROW WITH AISLE BETWEEN (FEET)



NOTES:

- 1) ALL PARKING SPACE STRIPING TO BE WHITE IN COLOR.
- 2) IF A PARKING LOT SERVES A USE WHICH GENERATES 2,500 OR MORE VEHICLE TRIPS A DAY, SUCH PARKING SPACES SHALL BE MARKED BY WHITE THERMOPLASTIC LINES.
- 3) ALL CITY OF CLEARWATER PROJECTS SHALL BE IN THERMOPLASTIC.

STANDARD PARKING STALL

CITY INDEX NO. 120; 1 OF 1

N.T.S.

				CITY OF CLEARWATER, FLORIDA ENGINEERING DEPARTMENT		
				DRAWN BY E.A.	STANDARD PARKING STALL	DATE 01/09
△	12/09	CHANGED NOTE NO. 2	TRAF. ENG.	CHECKED BY M.Q.		INDEX NO. 120
REV.	DATE	DESCRIPTION	APP.	DESIGNED BY B.E.		1 OF 1