

Session Name: New Session 6-13-2022 7:49 PM (1)

Date Created: 6/13/2022 6:59:42 PM Active Participants: 73 of 73

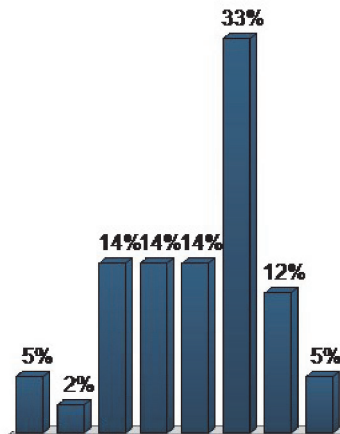
Average Score: 0.00%

Questions: 17

Results by Question

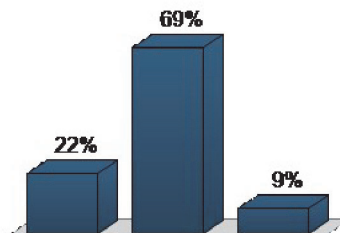
1. What is your age? (Multiple Choice)

	Responses	
	Percent	Count
Under 18	4.76%	2
18-29	2.38%	1
30-39	14.29%	6
40-49	14.29%	6
50-59	14.29%	6
60-69	33.33%	14
70-79	11.9%	5
80+	4.76%	2
Totals	100%	42



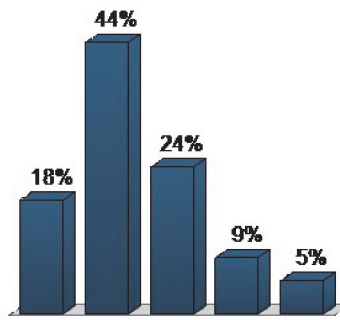
2. Do you rent or own your home? (Multiple Choice)

	Responses	
	Percent	Count
Rent	22.22%	12
Own	68.52%	37
Other / Prefer not to answer	9.26%	5
Totals	100%	54



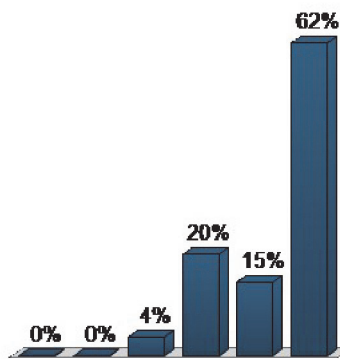
3. How many people live in your household? (Multiple Choice)

	Responses	
	Percent	Count
1 person	18.18%	10
2 persons	43.64%	24
3 persons	23.64%	13
4 persons	9.09%	5
5 or more persons	5.45%	3
Totals	100%	55



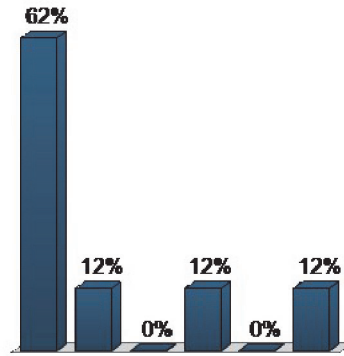
4. Where do you shop most often? (Multiple Choice)

	Responses	
	Percent	Count
N. MLK Jr. Ave.	0%	0
N. Fort Harrison Ave.	0%	0
N. Myrtle Ave.	3.64%	2
N. Highland Ave.	20%	11
Online	14.55%	8
Other locations outside CRA	61.82%	34
Totals	100%	55



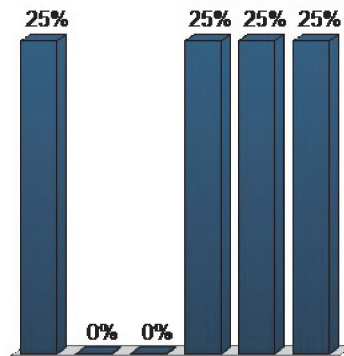
6. How do you get to work? (Multiple Choice)

	Responses	
	Percent	Count
Car, van, truck, motorcycle	62.5%	5
Bus	12.5%	1
Bicycle	0 %	0
Walk	12.5%	1
Work at home	0 %	0
Not employed, or retired	12.5%	1
Totals	100 %	8



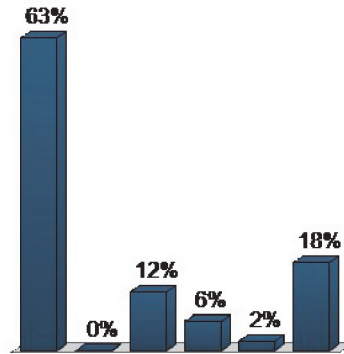
5. What retail businesses would you like to see more of in the neighborhood? (Rank Most To Least Important) (Priority Ranking)

	Responses	
	Percent	Weighted Count
Restaurants	25 %	10
Clothing	0 %	0
Services	0 %	0
Fresh Produce	25 %	10
Local Businesses	25 %	10
Other	25 %	10
Totals	100 %	40



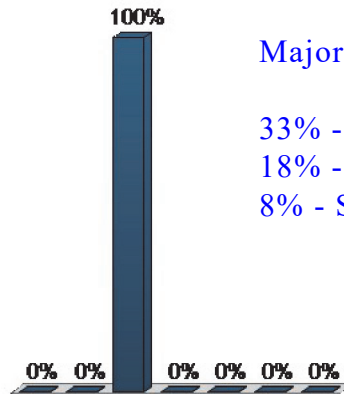
7. If convenient public transportation services were available near your home, how many times per week would you use it to get to/from work or school? (Multiple Choice)

	Responses	
	Percent	Count
None	62.75%	32
1 day per week	0 %	0
2 days per week	11.76%	6
3 days per week	5.88%	3
4 days per week	1.96%	1
5 or more days per week	17.65%	9
Totals	100 %	51



8. What do you think about public transportation services in the City? (Multiple Choice)

	Responses	
	Percent	Count
Fares too expensive	0 %	0
No or limited bus service	0 %	0
Safety concerns	100%	1
Cleanliness issues	0 %	0
Commute takes too long	0 %	0
No service changes needed	0 %	0
No opinion	0 %	0
Totals	100 %	1

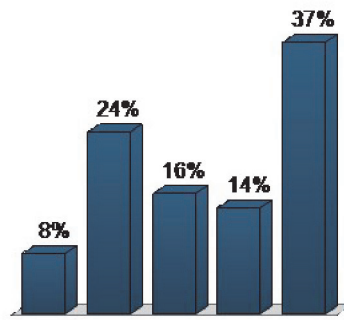


Major Responses Were Noted on Flip Charts

- 33% - Commute times too long
- 18% - No or limited bus service
- 8% - Safety concerns

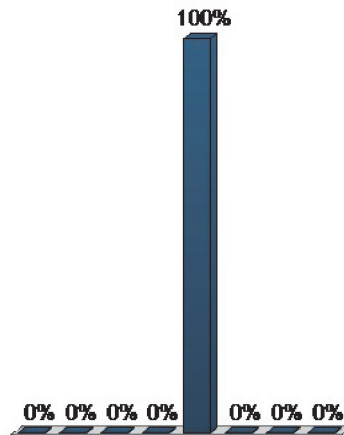
9. How often do you use the Pinellas Trail? (Multiple Choice)

Responses		
	Percent	Count
Daily	8.16%	4
Weekly	24.49%	12
Monthly	16.33%	8
Yearly	14.29%	7
Never	36.73%	18
Totals	100%	49



10. What amenities do you want most in the neighborhood? (Pick Top 3) (Priority Ranking)

Responses		
	Percent	Weighted Count
Sidewalks	0 %	0
Parks / open space	0 %	0
Public parking	0 %	0
Streetlights	0 %	0
Traffic calming	100%	10
Shade trees	0 %	0
Community policing	0 %	0
Other options	0 %	0
Totals	100%	10



Major Responses Were Noted on Flip Charts

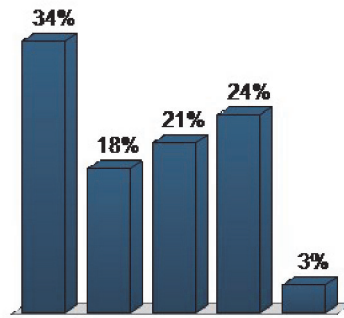
- 33% - Parks / open space
- 30% - Streetlights
- 15% - Sidewalks
- 15% - Shade trees
- 7% - Community policing
- 0% - Public parking

Other items discussed

- Playgrounds
- Public Art
- Food Halls
- Garden spaces
- Access to Creek

11. What additional recreational uses should be considered on City-owned lands along Stevenson Creek (Pick Top 3) (Priority Ranking)

	Responses	
	Percent	Weighted Count
Boardwalk along mangrove and water edge	33.53%	392
Non-motorized (kayak, canoe, paddle board) launch	17.79%	208
Fishing	20.87%	244
Seating / viewing	24.38%	285
No additional recreational water access	3.42%	40
Totals	100%	1169

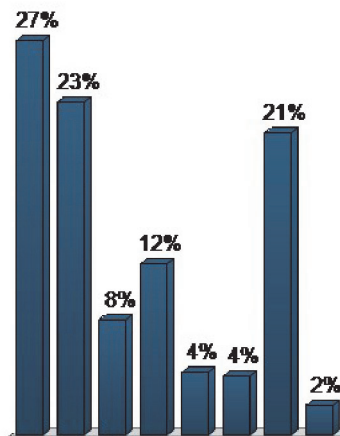


Question 12 was not picked up in auto response report and is added with the results noted from manual reporting on flip charts.

12. What features do you enjoy the most in North Greenwood? (Pick Top 3)
- a. Arts and culture
 - b. Neighborhood identity, community events and gatherings
 - c. Diversity
 - d. Historic buildings
 - e. Housing affordability
 - f. Job opportunities
 - g. Local businesses
 - h. Parks, recreational opportunities, and natural features
 - i. Transportation options
 - j. Walkability

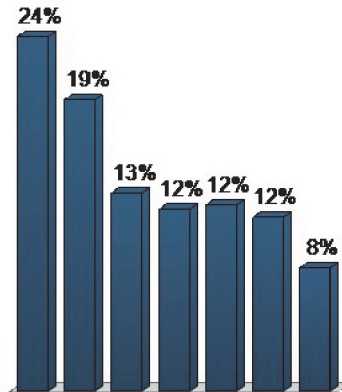
13. We have heard there is a need for more housing in the area.
 What type of housing units are most needed? (Pick Top 3) (Priority Ranking)

	Responses	
	Percent	Weighted Count
Single family	26.91%	120
Multi-family apartments (rental)	22.65%	101
Multi-family condos (owner occupied)	7.85%	35
Duplex, triplex, and quadraplex units	11.66%	52
Accessory dwelling units (mother-in-law suites)	4.26%	19
Micro units (small single room units)	4.04%	18
Any type that is affordable	20.63%	92
Unsure / no opinion	2.02%	9
Totals	100%	446



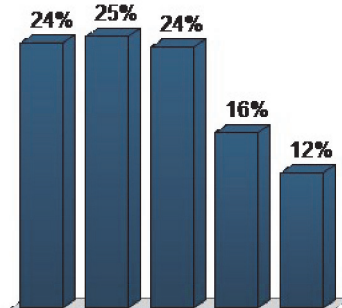
**14. What are the biggest challenges facing North Greenwood?
(Rank Most To Least Important) (Priority Ranking)**

	Responses	
	Percent	Weighted Count
Housing costs	23.55%	174
Employment in neighborhood	19.35%	143
Gentrification / displacement	13.13%	97
Crime / drugs	12.04%	89
Homelessness	12.31%	91
Aging in place	11.5%	85
Other challenges	8.12%	60
Totals	100 %	739



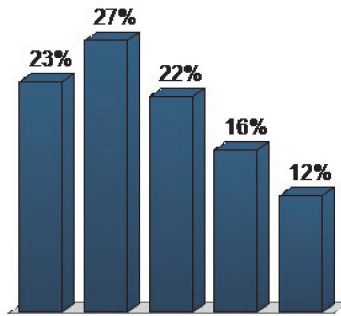
15. What should publicly owned properties be redeveloped as in the neighborhood? (Rank Most to Least Important) (Priority Ranking)

	Responses	
	Percent	Weighted Count
New housing	23.95%	199
New business	24.55%	204
Community services use	23.59%	196
Landscaping / open space	15.76%	131
Other options	12.15%	101
Totals	100 %	831



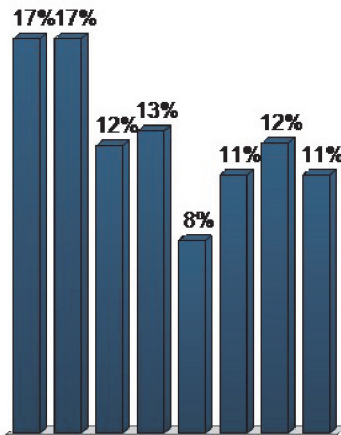
16. What improvement programs for privately owned properties should be considered in the CRA strategies? (Rank Most to Least Important) (Priority Ranking)

	Responses	
	Percent	Weighted Count
Housing development grants	23.14%	227
Housing low-interest improvement loans	27.32%	268
Commercial exterior site improvement grants	21.61%	212
Commercial interior improvement grants	16.31%	160
Other grants or programs	11.62%	114
Totals	100%	981



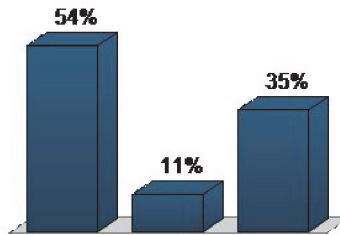
17. What educational improvements are needed as part of People-Based CRA strategies? (Rank Most To Least Importance) (Priority Ranking)

	Responses	
	Percent	Weighted Count
Partnership with St. Pete College workforce skill programs	16.61%	158
Partnership with Pinellas County School District High School career / vocational programs	16.61%	158
Resident financial literacy programs	12.09%	115
Mental health and wellness programs	12.72%	121
Treatment and transition from homelessness program	8.1%	77
Childcare development program	10.83%	103
Skills training and education grants	12.2%	116
Other grants or programs	10.83%	103
Totals	100%	951



18. The North Greenwood CRA Plan requires a Vision Statement to help guide future actions in implementation of the plan. Does this draft represent your thoughts for the North Greenwood CRA? DRAFT—Foster and sustain the North Greenwood community where history, personal well-being, and a thriving economy are nurtured and protected. (Do you agree with this statement?) (Multiple Choice)

Responses		
	Percent	Count
Yes	54.05%	20
No	10.81%	4
Other options	35.14%	13
Totals	100%	37



Other option items discussed during meeting and noted on flip charts.

- It should include 'quality of life'
- It should include 'academic excellence'
- It should be recognizable as a vision statement
- The draft reads like a mission statement