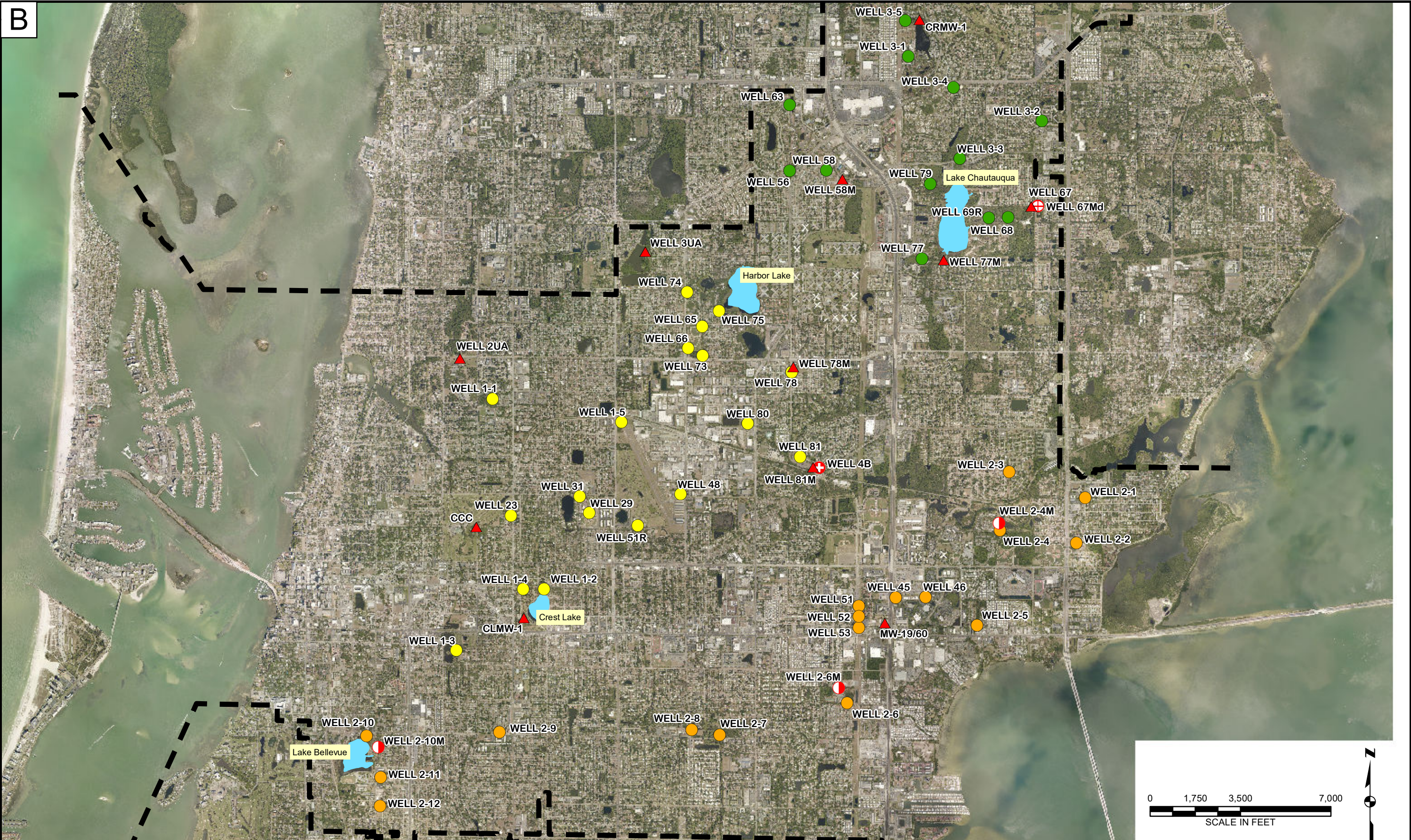


WSP Office: St. Paul, MN | Source: Q:\GRAPHICS\GISDATA\13140\1834.000 - McKim Creed Clearwater MFG\GIS\1314F1834_000 - 001.mxd, 3/14/2019, 9:46:54 AM, NAD 1983 StatePlane Florida West FIPS 0902 Feet



- Legend**
- | | |
|--|--------------------------------|
| ● Existing City of Clearwater Production Well-Well Field 1 | ▲ Upper Zone A Monitoring Well |
| ● Existing City of Clearwater Production Well-Well Field 2 | ⊕ Zone B Monitoring Well |
| ● Existing City of Clearwater Production Well-Well Field 3 | ⊖ Duel Zone Monitoring Well |
| ⊕ Lower Zone A Monitoring Well | — Service Area |

Drawn: 3/14/2019
Service Layer Credits: FDOT A+PLUS

wsp WSP USA INC.
2202 N. WEST SHORE BLVD.
SUITE 300
TAMPA, FL 33607
TEL: +1 813 520 4444

WELL TESTING AND MAINTENANCE SERVICES

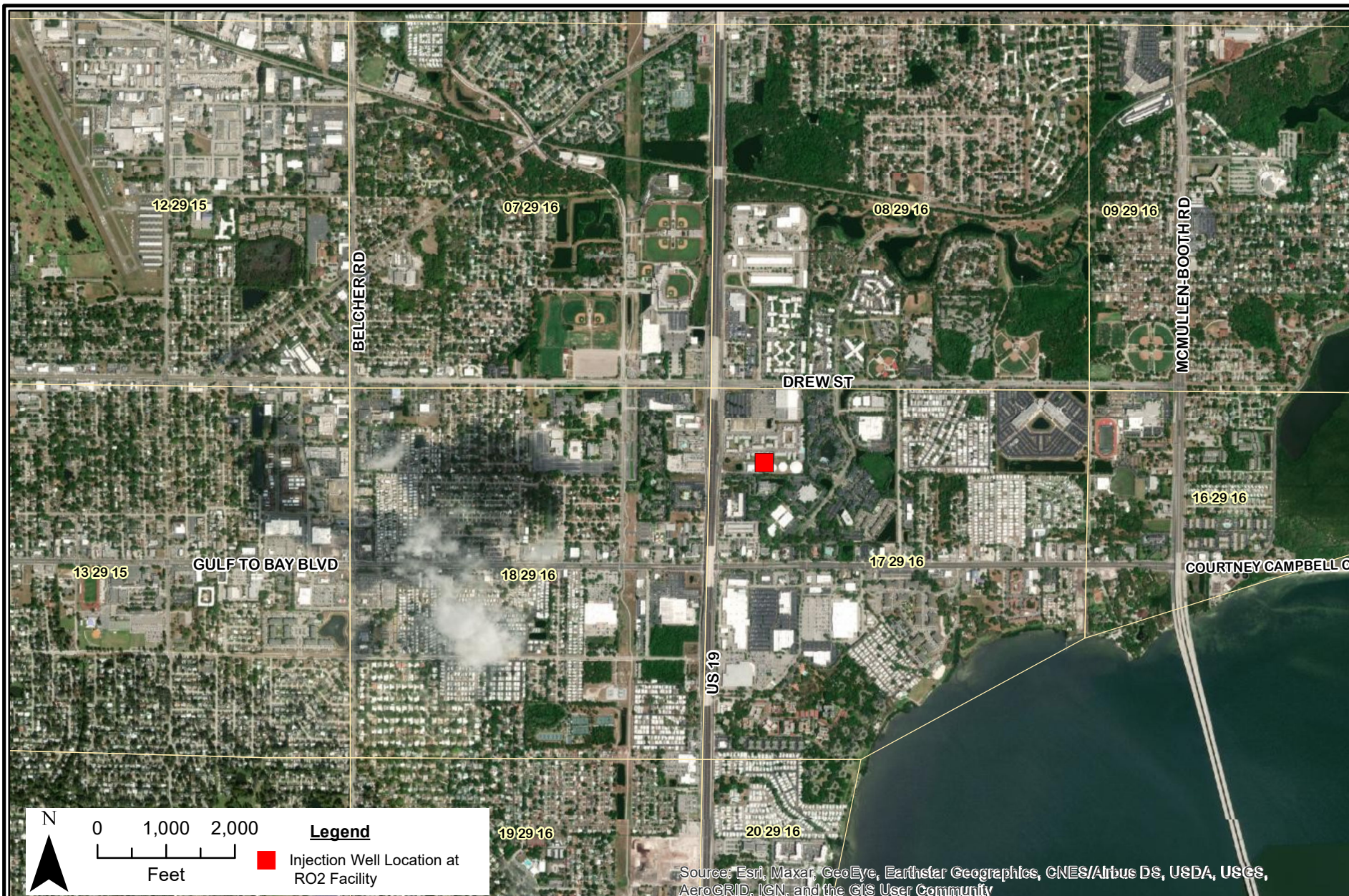
PREPARED FOR
CITY OF CLEARWATER
PINELLAS COUNTY, FL


FIGURE 1

WELL FIELD MAP

THE ORIGINAL VERSION OF THIS DRAWING IS IN COLOR. BLACK AND WHITE COPIES MAY NOT ACCURATELY DEPICT CERTAIN INFORMATION.

NOTICE: THIS DRAWING HAS BEEN PREPARED UNDER THE DIRECTION OF A PROFESSIONAL. DO NOT ALTER THIS DOCUMENT IN ANY WAY WITHOUT THE WRITTEN CONSENT OF WSP USA INC.



DATE	REVISED	<input type="checkbox"/> Acad	<div>WELL TESTING AND MAINTENANCE SERVICES</div> <hr/> <div>RO2 FACILITY AND IW-1 SITE LOCATION MAP</div>	<div>PREPARED BY:</div> <div>  <div> WSP USA, Inc. 2202 N. Westshore Blvd. Suite 300 Tampa, Florida 33607 (813) 520-4444 </div> </div>	DRAWN BY: TDH
		<input checked="" type="checkbox"/> GIS			CHECKED BY: JMT
		<input type="checkbox"/> Corel			DATE: Feb. 2021
					FIGURE NO.: 2