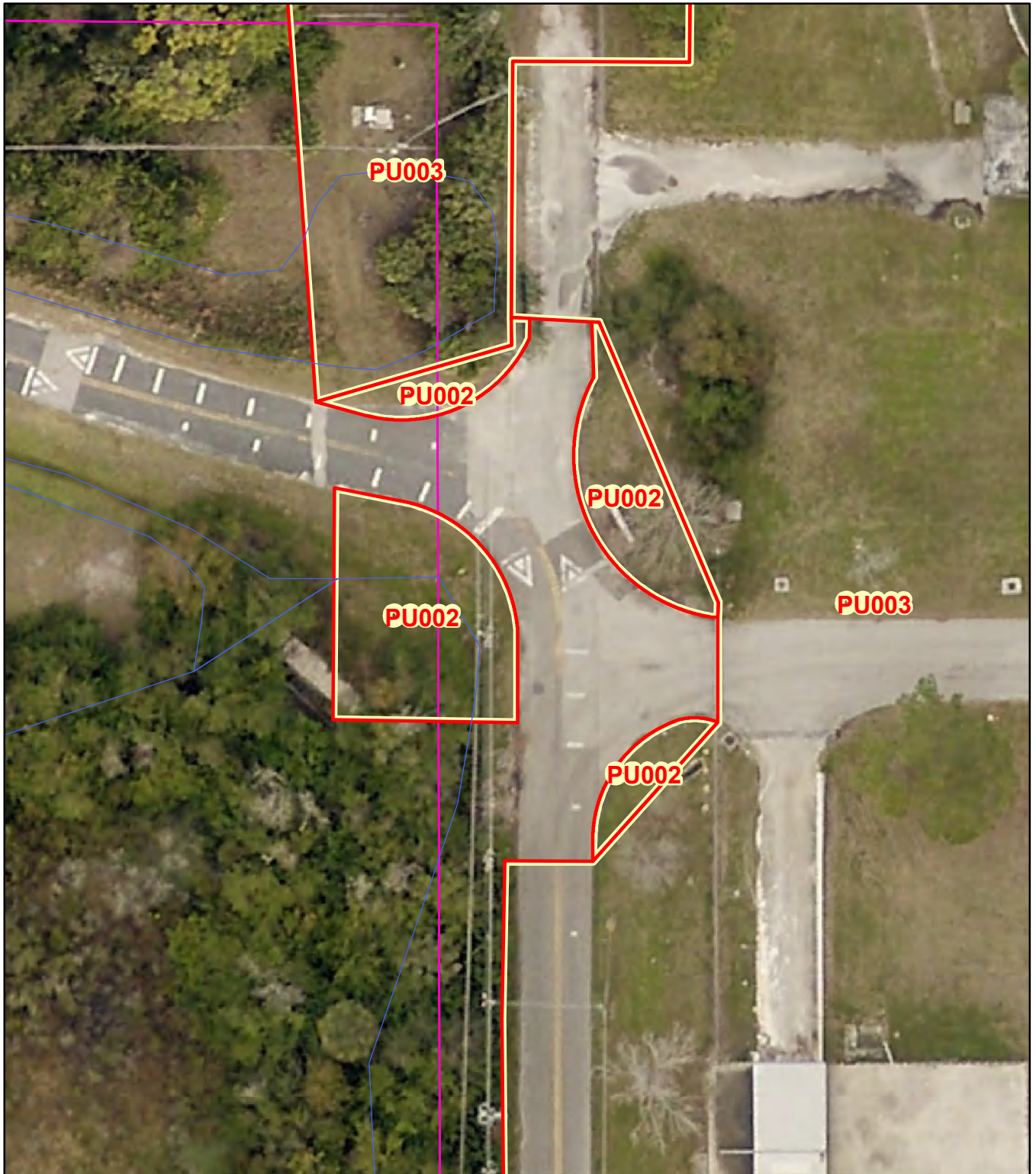


Landscape Maintenance 2019 Contract Sites



0 40 80 Feet

1 inch = 40 feet



Prepared by:
City of Clearwater
Engineering Department

Site Type: **Wastewater (WET)**
Site Address: **3290 SR 580**
Site Description: **WPC - NE Plant**

Maintenance Zone: **Countryside**

Site #: **PU001**

Date Saved: 7/2/2019

Page 138 of 640



CLEARWATER
BRIGHT AND BEAUTIFUL • BAY TO BEACH

Clearwater Public Utilities Landscaping **Site Information**

Site # PU001

Site Name WPC - NE Plant

Site Address 3290 SR 580

Hours Accessible: 7A to 7P

Days Accessible: Any Day

Project Manager Contact: (questions about schedules, invoices, procedures)

TBD – Post Award

Emergency Contact Information: (questions about site specific conditions or access issues or damage)

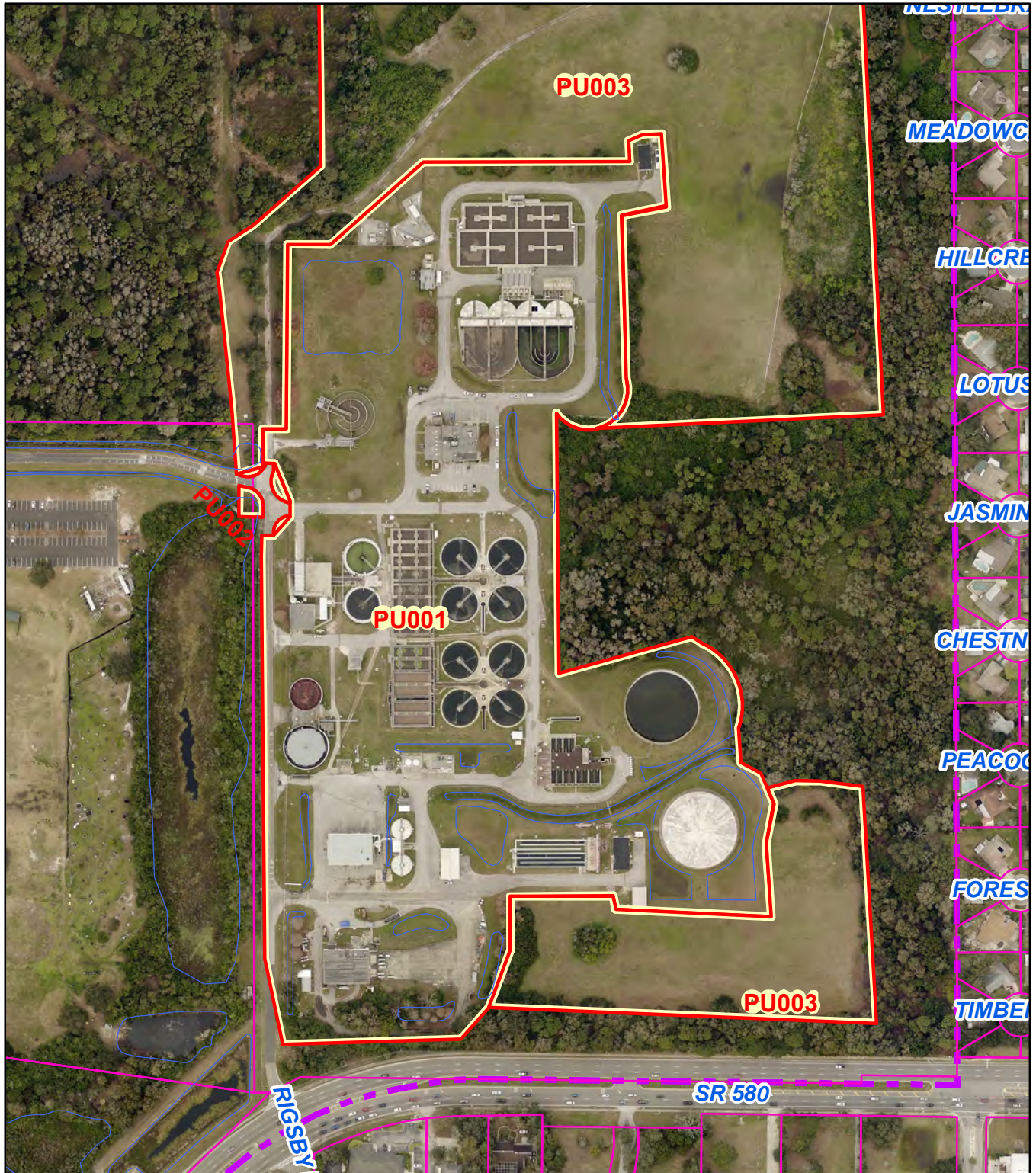
TBD - Post Award

To Get Paid:

When you have completed the service sign the logbook in this box

Have your office email the invoice to PUAccounting@MyClearwater.com

Landscape Maintenance 2019 Contract Sites



0 300 600 Feet

1 inch = 300 feet



Prepared by:
City of Clearwater
Engineering Department

Site Type: **Wastewater (WET)**

Site Address: **3290 SR 580**

Site Description: **WPC - NE Plant outside corners**

Maintenance Zone: **Public Utilities**

Site #: **PU002**



CLEARWATER
BRIGHT AND BEAUTIFUL • BAY TO BEACH

Clearwater Public Utilities Landscaping **Site Information**

Site # PU002

Site Name WPC - NE Plant Outside Corners

Site Address 3290 SR 580

Hours Accessible: 7A to 7P

Days Accessible: Any Day

Project Manager Contact: (questions about schedules, invoices, procedures)

TBD – Post Award

Emergency Contact Information: (questions about site specific conditions or access issues or damage)

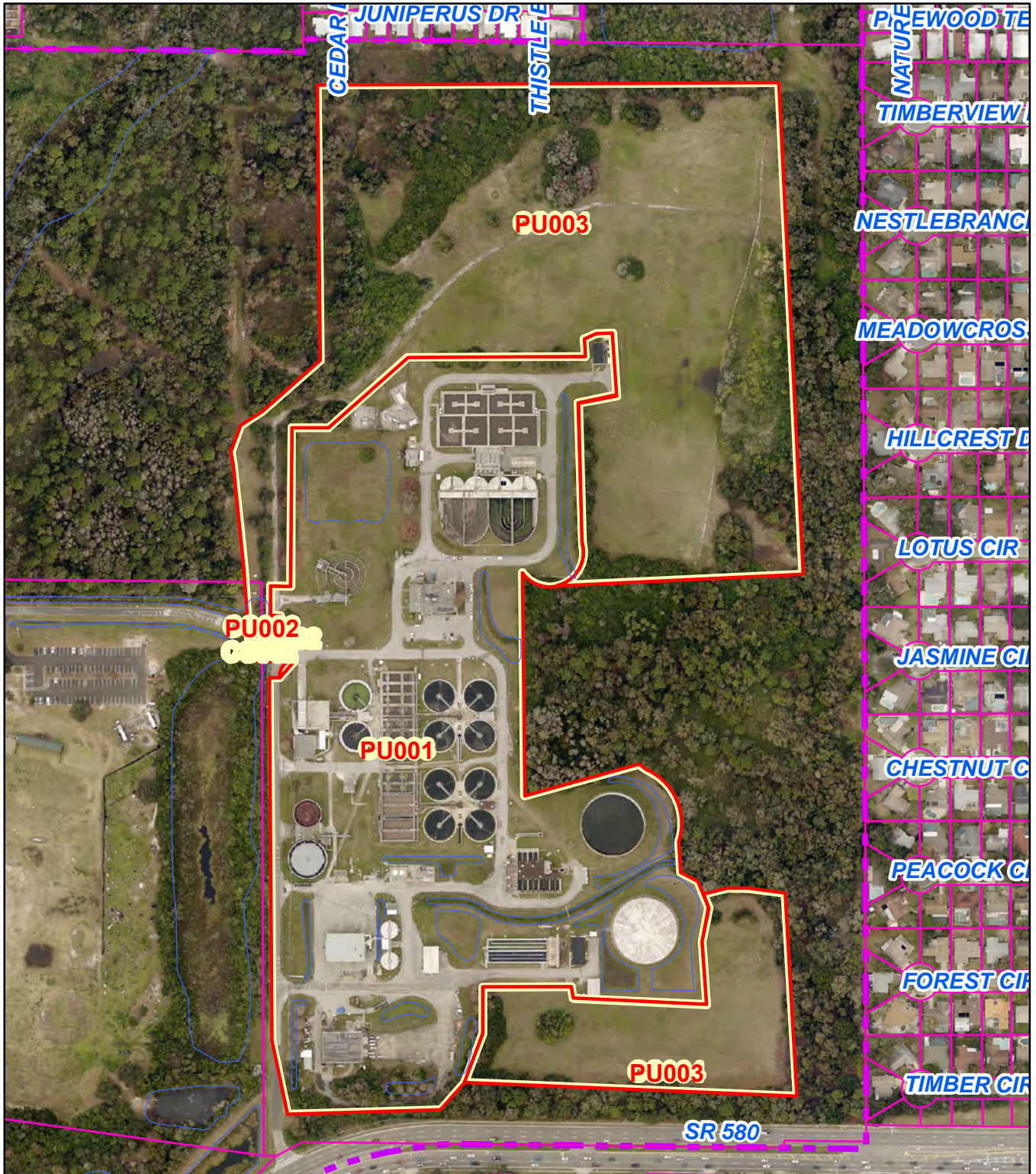
TBD - Post Award

To Get Paid:

When you have completed the service sign the logbook in this box

Have your office email the invoice to PUAccounting@MyClearwater.com

Landscape Maintenance 2019 Contract Sites



0 350 700 Feet

1 inch = 350 feet



Prepared by:
City of Clearwater
Engineering Department

Site Type: **Wastewater (WET)**
Site Address: **3290 SR 580; N of SR 580, E of McMullen Booth Road**
Site Description: **WPC - NE Plant Outside**

Maintenance Zone: **Public Utilities**

Site #: **PU003**



CLEARWATER
BRIGHT AND BEAUTIFUL • BAY TO BEACH

Clearwater Public Utilities Landscaping **Site Information**

Site # PU003

Site Name WPC - NE Plant Outside

Site Address 3290 SR 580; N of SR 580, E of McMullen Booth Road

Hours Accessible: 7A to 7P

Days Accessible: Any Day

Project Manager Contact: (questions about schedules, invoices, procedures)

TBD – Post Award

Emergency Contact Information: (questions about site specific conditions or access issues or damage)

TBD - Post Award

To Get Paid:

When you have completed the service sign the logbook in this box

Have your office email the invoice to PUAccounting@MyClearwater.com

Landscape Maintenance 2019 Contract Sites



0 100 200 Feet

1 inch = 100 feet



Prepared by:
City of Clearwater
Engineering Department

Site Type: **Wastewater (WET)**
Site Address: **3141 Gulf to Bay Boulevard**
Site Description: **WPC East Plant**

Maintenance Zone: **Public Utilities**

Site #: **PU005**

Date Saved: 7/2/2019

Page 196 of 640



CLEARWATER
BRIGHT AND BEAUTIFUL • BAY TO BEACH

Clearwater Public Utilities Landscaping **Site Information**

Site # PU005

Site Name WPC East Plant

Site Address 3141 Gulf to Bay Boulevard

Hours Accessible: 7A to 7P

Days Accessible: Any Day

Project Manager Contact: (questions about schedules, invoices, procedures)

TBD – Post Award

Emergency Contact Information: (questions about site specific conditions or access issues or damage)

TBD - Post Award

To Get Paid:

When you have completed the service sign the logbook in this box

Have your office email the invoice to PUAccounting@MyClearwater.com

Landscape Maintenance 2019 Contract Sites



Maintenance Zone: **Public Utilities**

1 inch = 50 feet

Site Type: **Wastewater (WET)**

Site Address: **2060 N McMullen Booth Road**

Site Description: **Reclaim Pump Station - Union**



Site #: **PU006**

Prepared by:
City of Clearwater
Engineering Department

Date Saved: 7/2/2019

Page 197 of 640



CLEARWATER
BRIGHT AND BEAUTIFUL • BAY TO BEACH

Clearwater Public Utilities Landscaping **Site Information**

Site # PU006

Site Name Reclaim Pump Station - Union

Site Address 2060 N McMullen Booth Road

Hours Accessible: 7A to 7P

Days Accessible: Any Day

Project Manager Contact: (questions about schedules, invoices, procedures)

TBD – Post Award

Emergency Contact Information: (questions about site specific conditions or access issues or damage)

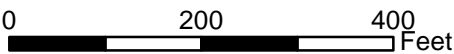
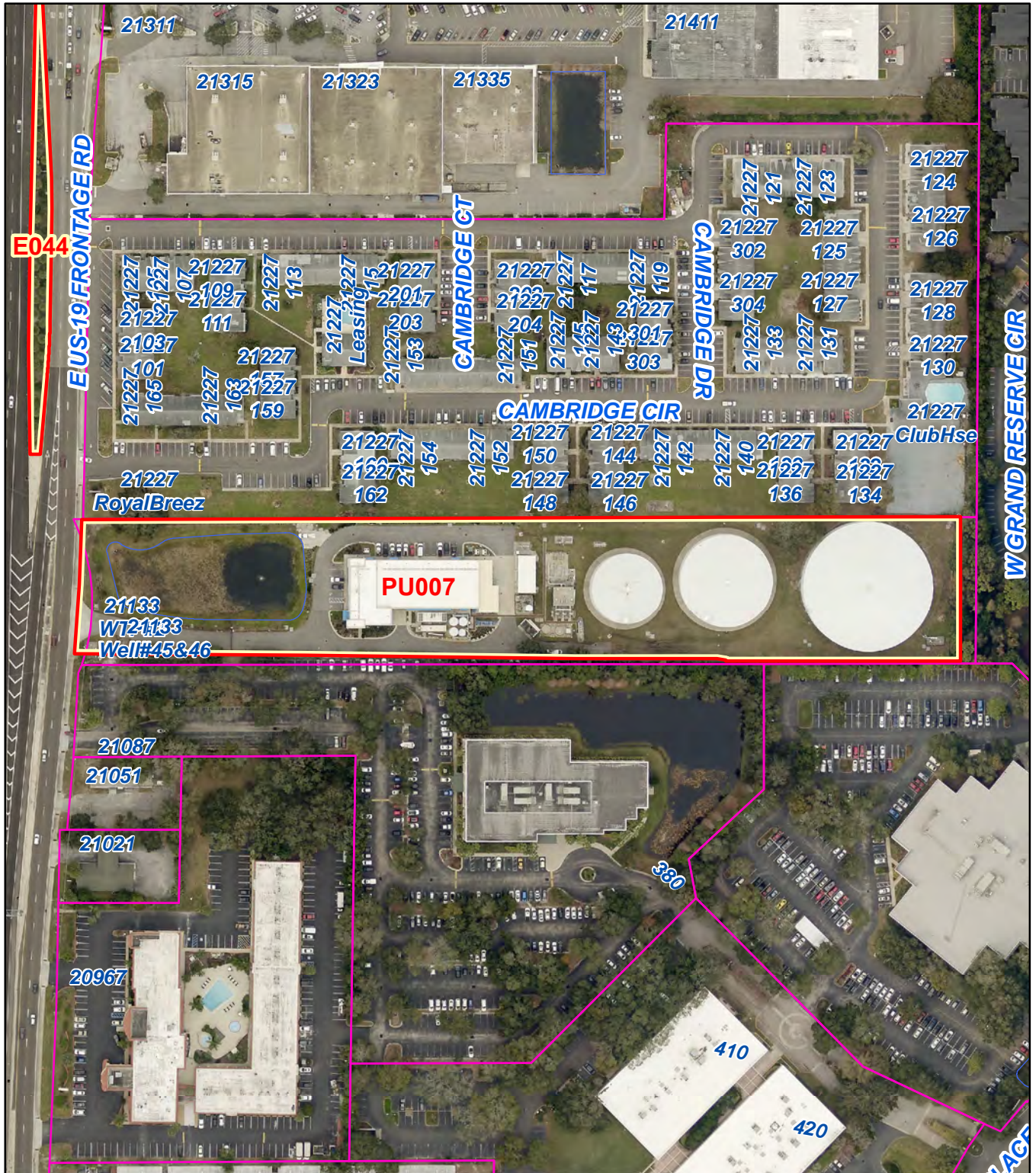
TBD - Post Award

To Get Paid:

When you have completed the service sign the logbook in this box

Have your office email the invoice to PUAccounting@MyClearwater.com

Landscape Maintenance 2019 Contract Sites



1 inch = 200 feet



Prepared by:
City of Clearwater
Engineering Department

Site Type: **Water**
Site Address: **21133 US 19 N**
Site Description: **WTP (RO) Plant #2**

Maintenance Zone: **Public Utilities**

Site #: **PU007**



CLEARWATER
BRIGHT AND BEAUTIFUL • BAY TO BEACH

Clearwater Public Utilities Landscaping **Site Information**

Site # PU007

Site Name WTP (RO) Plant #2

Site Address 21133 US Hwy 19 N

Hours Accessible: 7A to 7P

Days Accessible: Any Day

Project Manager Contact: (questions about schedules, invoices, procedures)

TBD – Post Award

Emergency Contact Information: (questions about site specific conditions or access issues or damage)

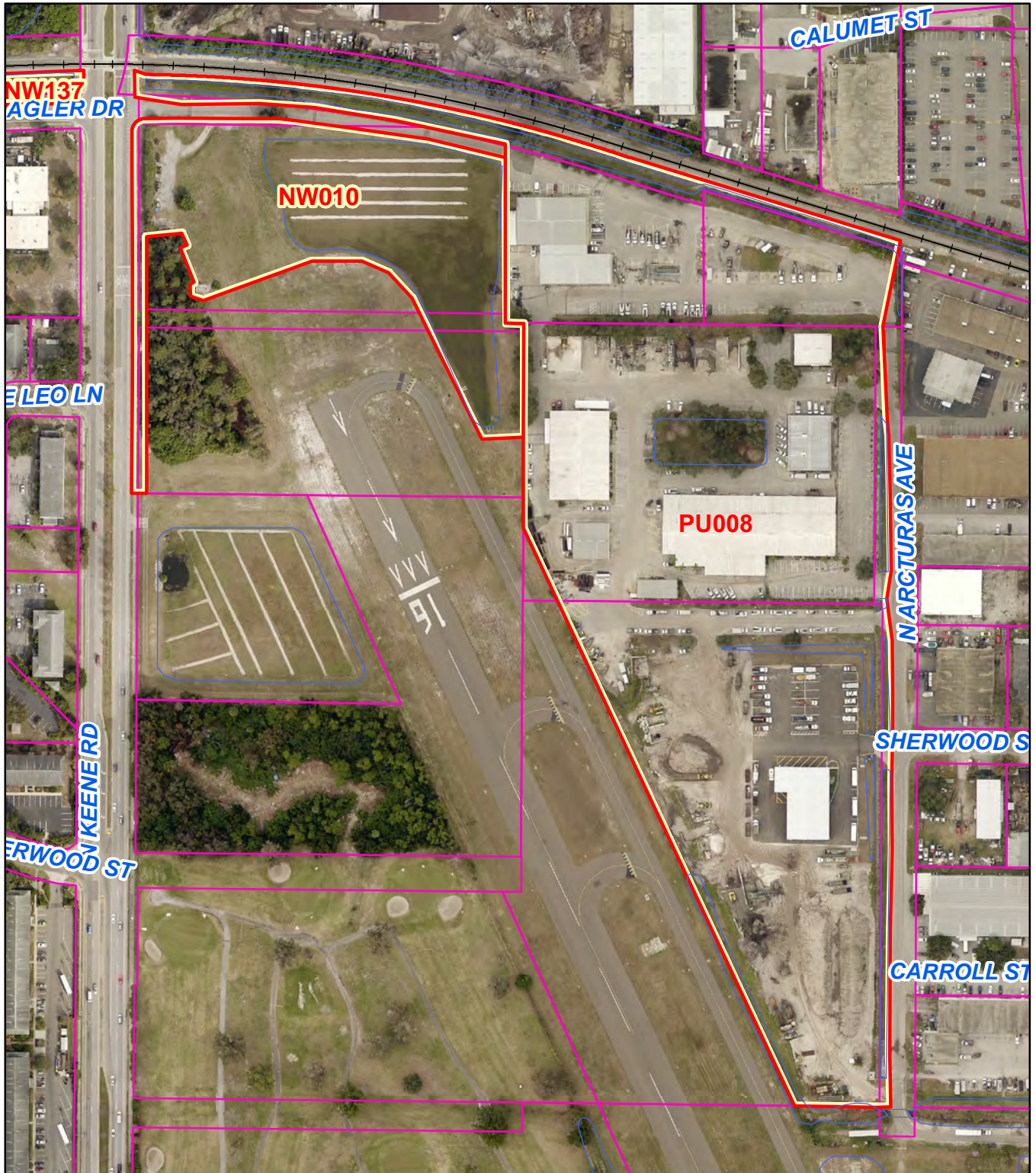
TBD - Post Award

To Get Paid:

When you have completed the service sign the logbook in this box

Have your office email the invoice to PUAccounting@MyClearwater.com

Landscape Maintenance 2019 Contract Sites



0 250 500 Feet

1 inch = 250 feet



Prepared by:
City of Clearwater
Engineering Department

Site Type: **Pub. Svcs.**
Site Address: **1650 Arcturas Avenue North**
Site Description: **Public Services Complex**

Maintenance Zone: **Public Utilities**

Site #: **PU008**

Date Saved: 7/2/2019

Page 315 of 640



CLEARWATER
BRIGHT AND BEAUTIFUL • BAY TO BEACH

Clearwater Public Utilities Landscaping **Site Information**

Site # PU008

Site Name Public Services Complex

Site Address 1650 Arcturas Avenue North

Hours Accessible: 7A to 4P

Days Accessible: Mon - Fri

Project Manager Contact: (questions about schedules, invoices, procedures)

TBD – Post Award

Emergency Contact Information: (questions about site specific conditions or access issues or damage)

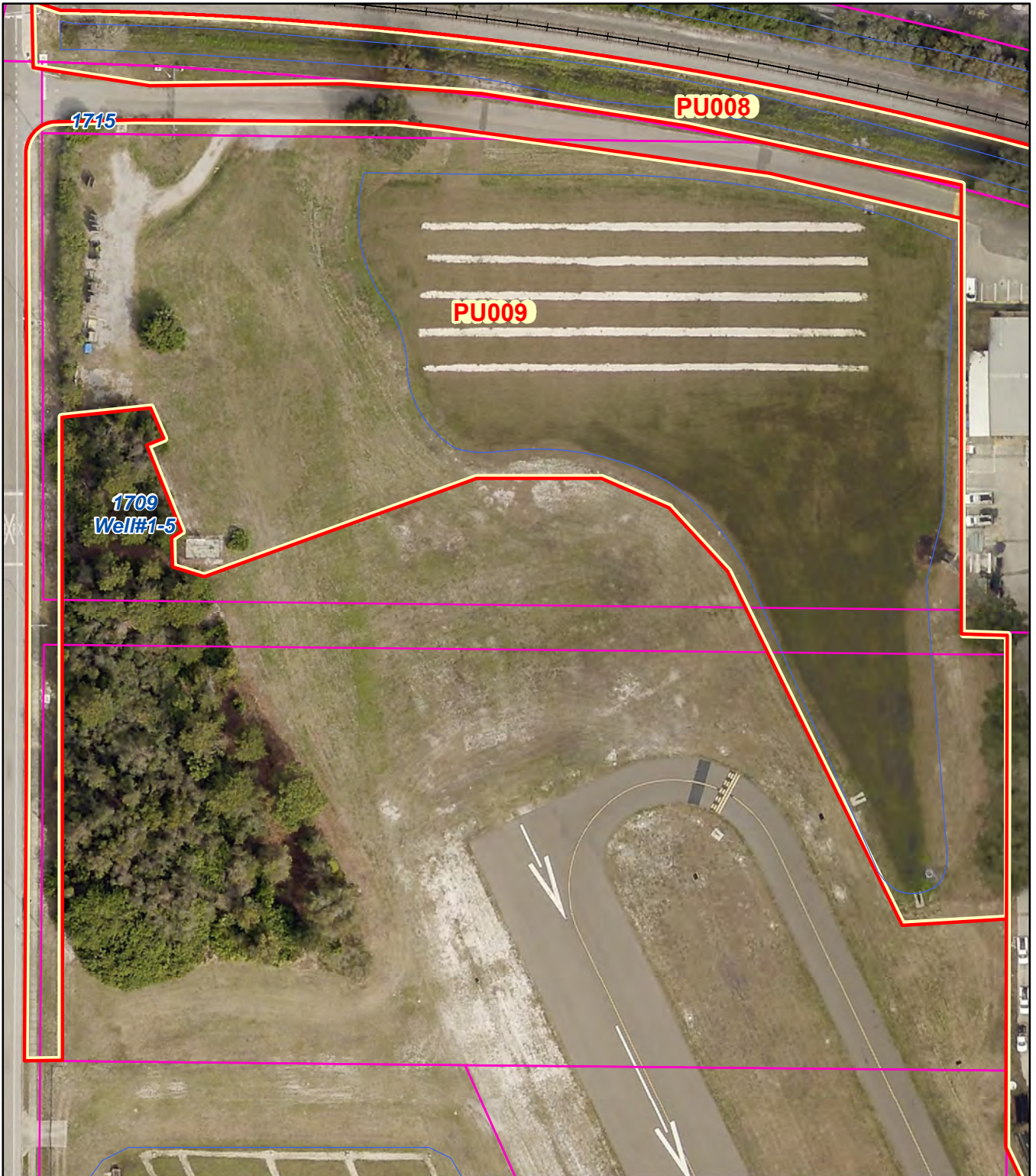
TBD - Post Award

To Get Paid:

When you have completed the service sign the logbook in this box

Have your office email the invoice to PUAccounting@MyClearwater.com

Landscape Maintenance 2019 Contract Sites



0 100 200 Feet

1 inch = 100 feet



Prepared by:
City of Clearwater
Engineering Department

Site Type: **Pub. Svcs.**
Site Address: **1650 Arcturas Avenue North - W side of Storage yard**
Site Description: **Public Services Complex Storage Yard**

Maintenance Zone: **Public Utilities**

Site #: **PU009**

Date Saved: 7/2/2019

Page 316 of 640



CLEARWATER
BRIGHT AND BEAUTIFUL • BAY TO BEACH

Clearwater Public Utilities Landscaping **Site Information**

Site # PU009

Site Name Public Services Complex Storage Yard

Site Address 1650 Arcturas Avenue North - W side of Storage yard

Hours Accessible: 7A to 4P

Days Accessible: Mon - Fri

Project Manager Contact: (questions about schedules, invoices, procedures)

TBD – Post Award

Emergency Contact Information: (questions about site specific conditions or access issues or damage)

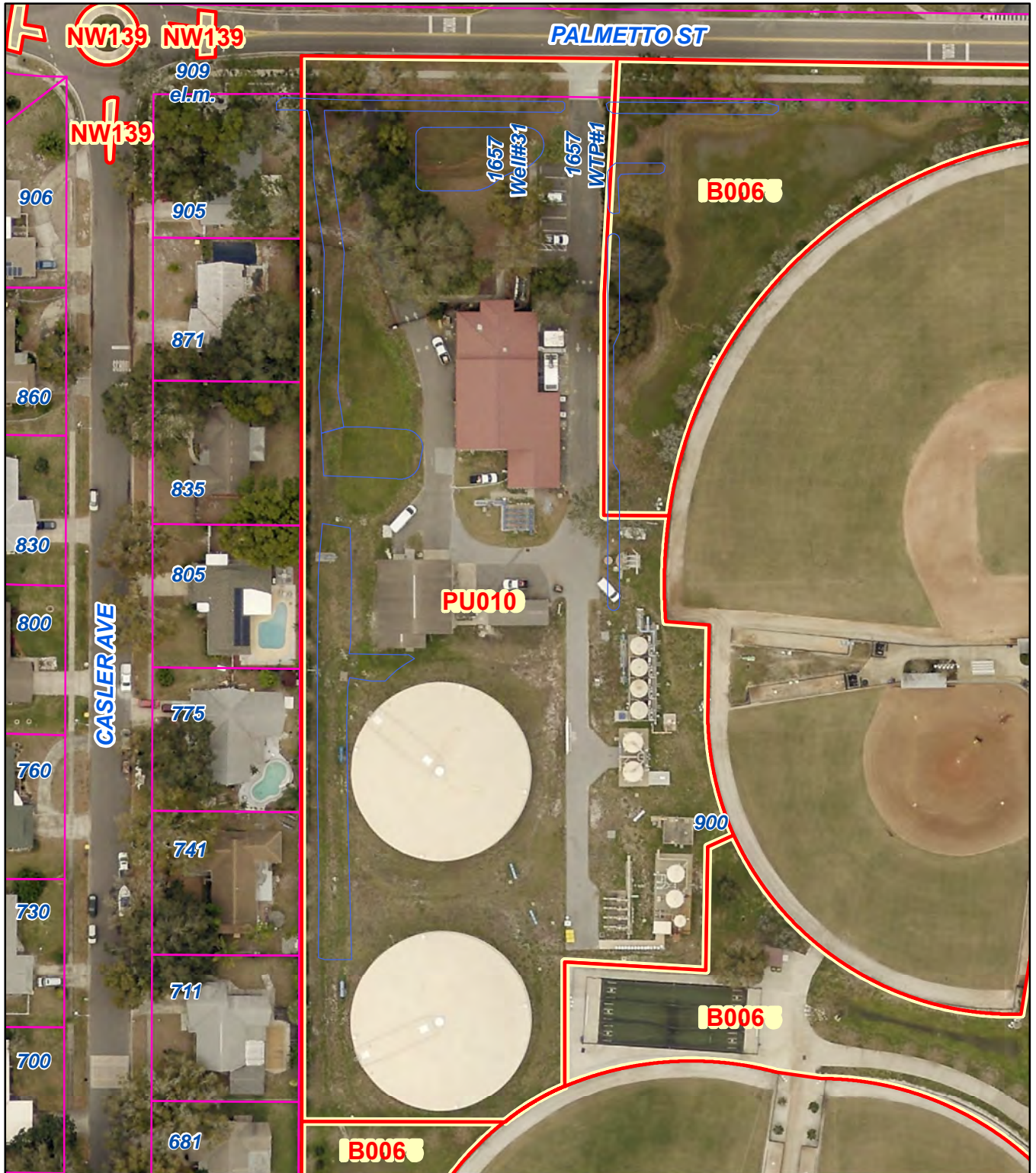
TBD - Post Award

To Get Paid:

When you have completed the service sign the logbook in this box

Have your office email the invoice to PUAccounting@MyClearwater.com

Landscape Maintenance 2019 Contract Sites



0 100 200 Feet

1 inch = 100 feet



Prepared by:
City of Clearwater
Engineering Department

Site Type: **Water**
Site Address: **1657 Palmetto Street**
Site Description: **Treatment Plant #1**

Maintenance Zone: **Public Utilities**

Site #: **PU010**

Date Saved: 7/2/2019

Page 325 of 640



CLEARWATER
BRIGHT AND BEAUTIFUL • BAY TO BEACH

Clearwater Public Utilities Landscaping **Site Information**

Site # PU010

Site Name WTP Plant #1

Site Address 1657 Palmetto Street

Hours Accessible: 7A to 7P

Days Accessible: Any Day

Project Manager Contact: (questions about schedules, invoices, procedures)

TBD – Post Award

Emergency Contact Information: (questions about site specific conditions or access issues or damage)

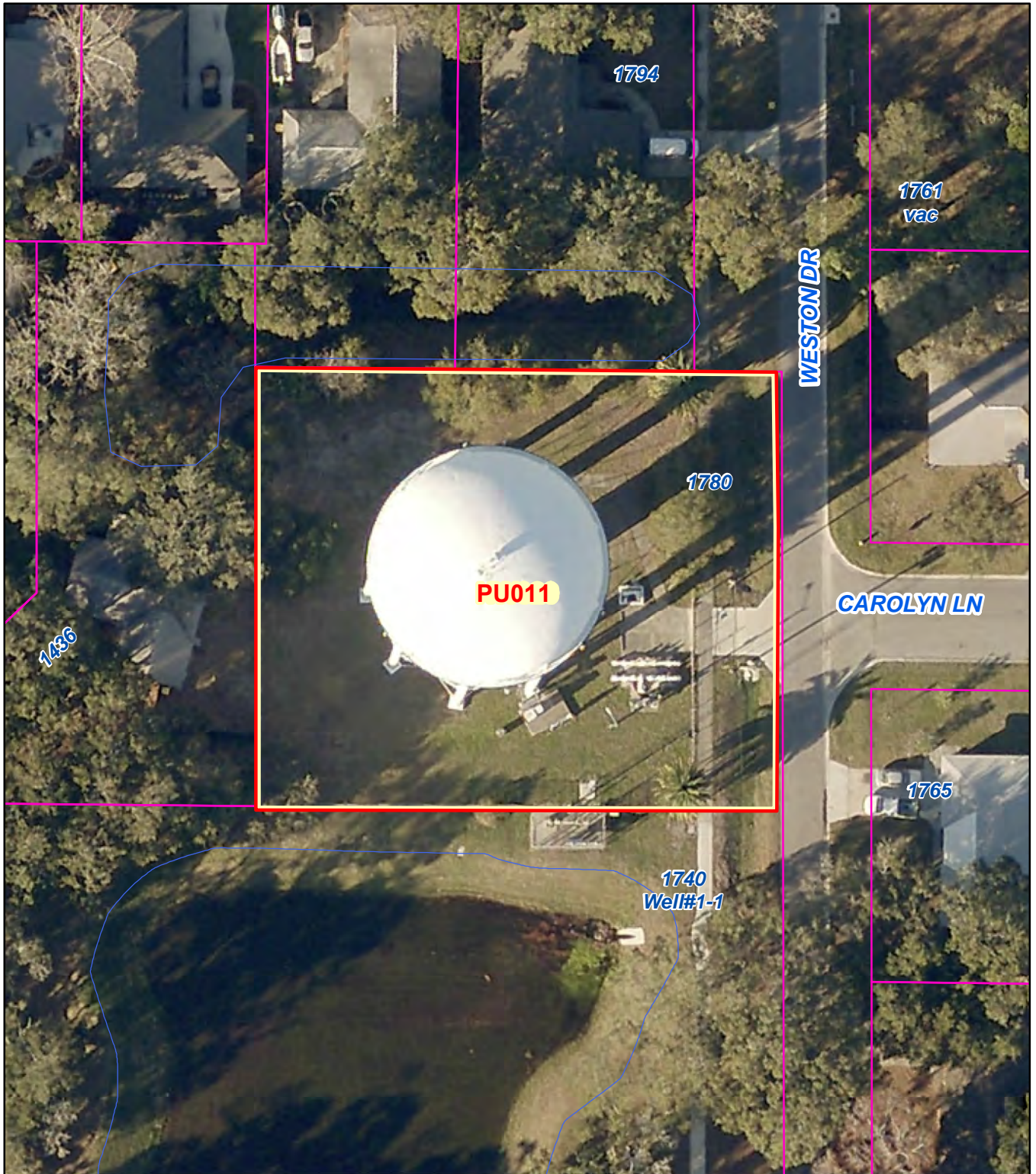
TBD - Post Award

To Get Paid:

When you have completed the service sign the logbook in this box

Have your office email the invoice to PUAccounting@MyClearwater.com

Landscape Maintenance 2019 Contract Sites



0 50 100 Feet

1 inch = 50 feet



Prepared by:
City of Clearwater
Engineering Department

Site Type: **Water**
Site Address: **1700 N Weston Drive (W of Highland)**
Site Description: **Tank #2 (Weston)**

Maintenance Zone: **Public Utilities**

Site #: **PU011**



CLEARWATER
BRIGHT AND BEAUTIFUL • BAY TO BEACH

Clearwater Public Utilities Landscaping **Site Information**

Site # PU011

Site Name Tank #2 (Weston)

Site Address 1700 N Weston Drive (W of Highland)

Hours Accessible: 7A to 7P

Days Accessible: Any Day

Project Manager Contact: (questions about schedules, invoices, procedures)

TBD – Post Award

Emergency Contact Information: (questions about site specific conditions or access issues or damage)

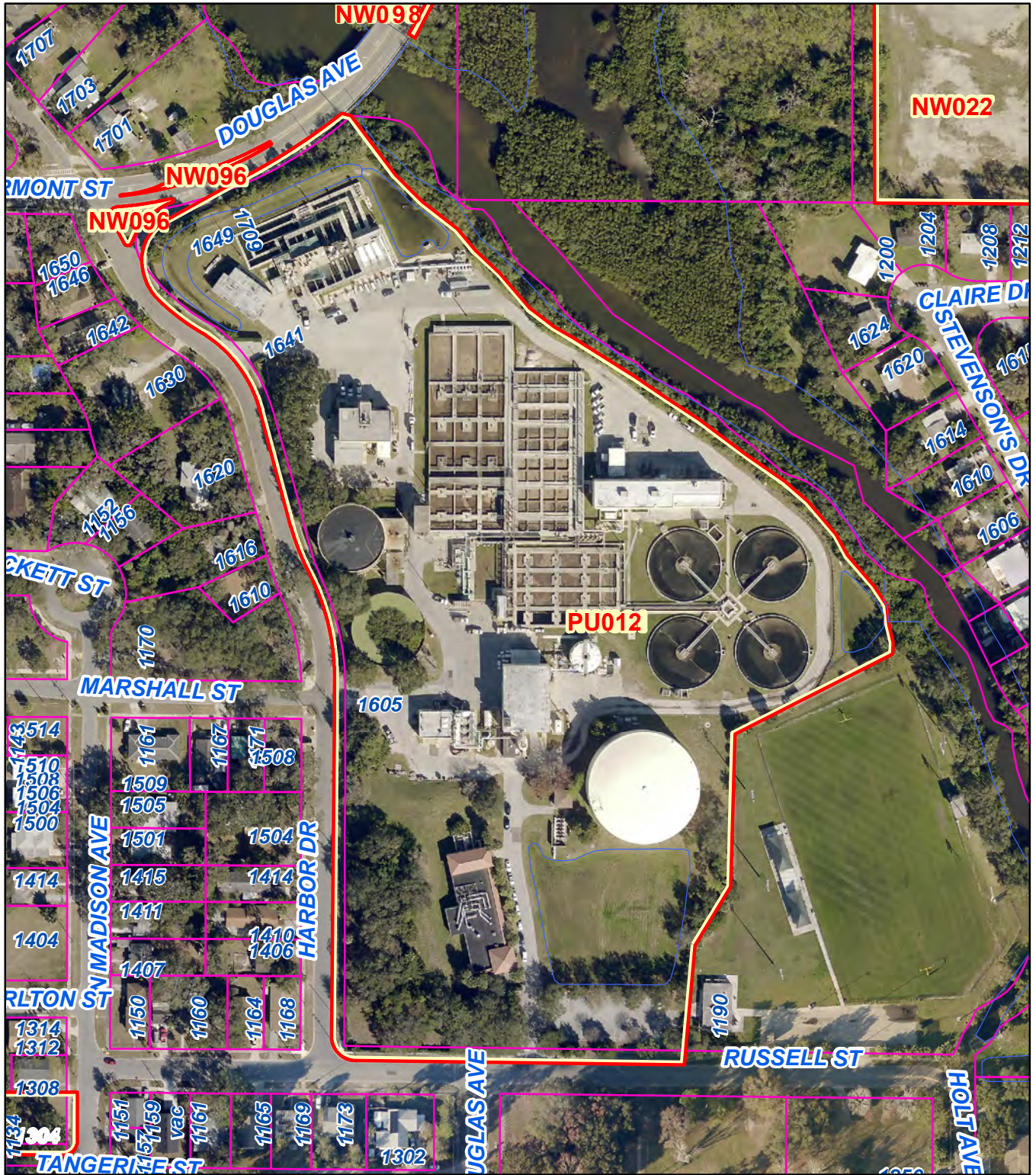
TBD - Post Award

To Get Paid:

When you have completed the service sign the logbook in this box

Have your office email the invoice to PUAccounting@MyClearwater.com

Landscape Maintenance 2019 Contract Sites



0 200 400 Feet

1 inch = 200 feet



Prepared by:
City of Clearwater
Engineering Department

Site Type: **Wastewater (WET)**
Site Address: **1605 Harbor Drive**
Site Description: **WPC Marshall Street Plant**

Maintenance Zone: **Public Utilities**

Site #: **PU012**



CLEARWATER
BRIGHT AND BEAUTIFUL • BAY TO BEACH

Clearwater Public Utilities Landscaping **Site Information**

Site # PU012

Site Name WPC Marshall Street Plant

Site Address 1605 Harbor Drive

Hours Accessible: 7A to 7P

Days Accessible: Any Day

Project Manager Contact: (questions about schedules, invoices, procedures)

TBD – Post Award

Emergency Contact Information: (questions about site specific conditions or access issues or damage)

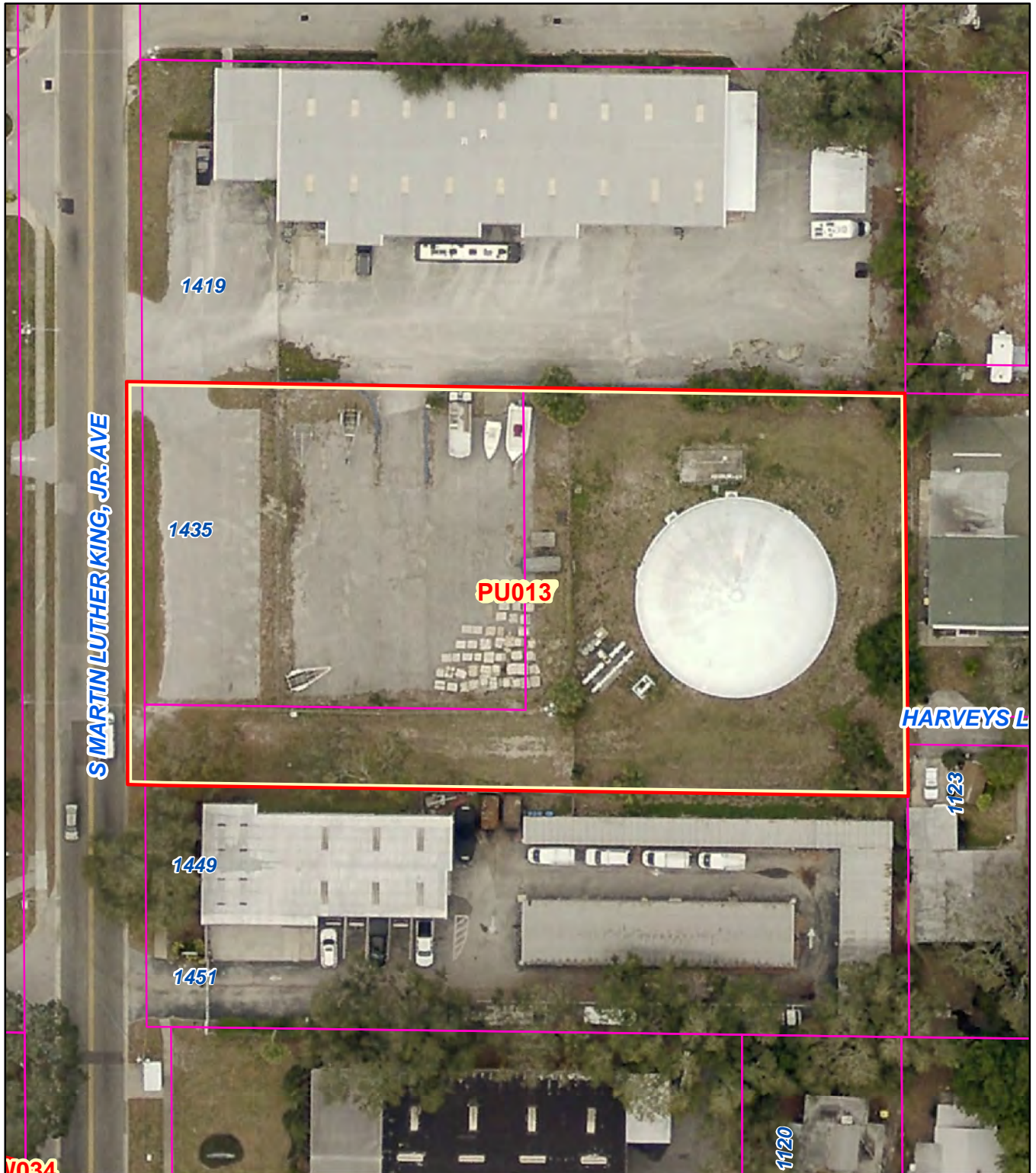
TBD - Post Award

To Get Paid:

When you have completed the service sign the logbook in this box

Have your office email the invoice to PUAccounting@MyClearwater.com

Landscape Maintenance 2019 Contract Sites



0 60 120 Feet

1 inch = 60 feet



Prepared by:
City of Clearwater
Engineering Department

Site Type: **Water**
Site Address: **1435 Martin Luther King Jr. Avenue S**
Site Description: **Tank #3 and Parking Lot**

Maintenance Zone: **Public Utilities**

Site #: **PU013**

Date Saved: 7/2/2019

Page 516 of 640



CLEARWATER
BRIGHT AND BEAUTIFUL • BAY TO BEACH

Clearwater Public Utilities Landscaping **Site Information**

Site # PU013

Site Name Tank #3 and Parking Lot

Site Address 1435 Martin Luther King Jr. Avenue S

Hours Accessible: 7A to 7P

Days Accessible: Any Day

Project Manager Contact: (questions about schedules, invoices, procedures)

TBD – Post Award

Emergency Contact Information: (questions about site specific conditions or access issues or damage)

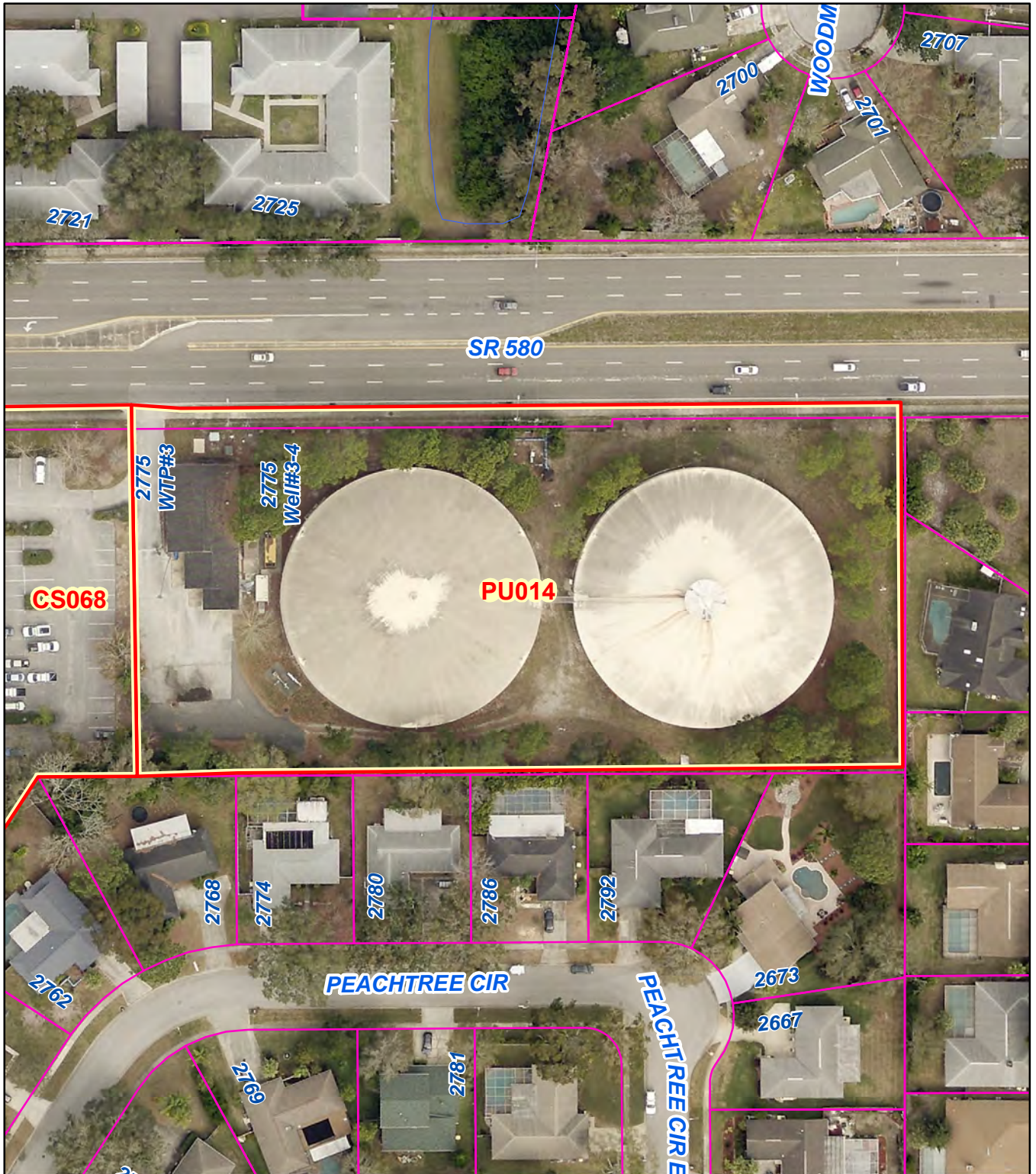
TBD - Post Award

To Get Paid:

When you have completed the service sign the logbook in this box

Have your office email the invoice to PUAccounting@MyClearwater.com

Landscape Maintenance 2019 Contract Sites



Maintenance Zone: **Public Utilities**

1 inch = 100 feet

Site Type: **Water**

Site Address: **2775 E. SR 580**

Site Description: **Reservoir #3 - Countryside**

Site #: **PU014**



Prepared by:
City of Clearwater
Engineering Department

Date Saved: 7/2/2019

Page 136 of 640



CLEARWATER
BRIGHT AND BEAUTIFUL • BAY TO BEACH

Clearwater Public Utilities Landscaping **Site Information**

Site # PU014

Site Name Reservoir #3 - Countryside

Site Address 2775 E. SR 580

Hours Accessible: 7A to 7P

Days Accessible: Any Day

Project Manager Contact: (questions about schedules, invoices, procedures)

TBD – Post Award

Emergency Contact Information: (questions about site specific conditions or access issues or damage)

TBD - Post Award

To Get Paid:

When you have completed the service sign the logbook in this box

Have your office email the invoice to PUAccounting@MyClearwater.com