

CITY OF CLEARWATER

MSB - 1st Floor

100 S Myrtle Ave  
Clearwater, FL

ORDER #

Jim Stapleton  
BOS CONTACT  
Cari Bennett  
SALES PROJECT COORDINATOR  
Chrisanne Schock  
PROJECT DESIGNER

REVISION: 1-15-25

- 1-20-25 CS
- 2-17-25 CS
- 3-10-25 CS
- 5-15-25 CS

FURNITURE PLAN  
SHEET NAME

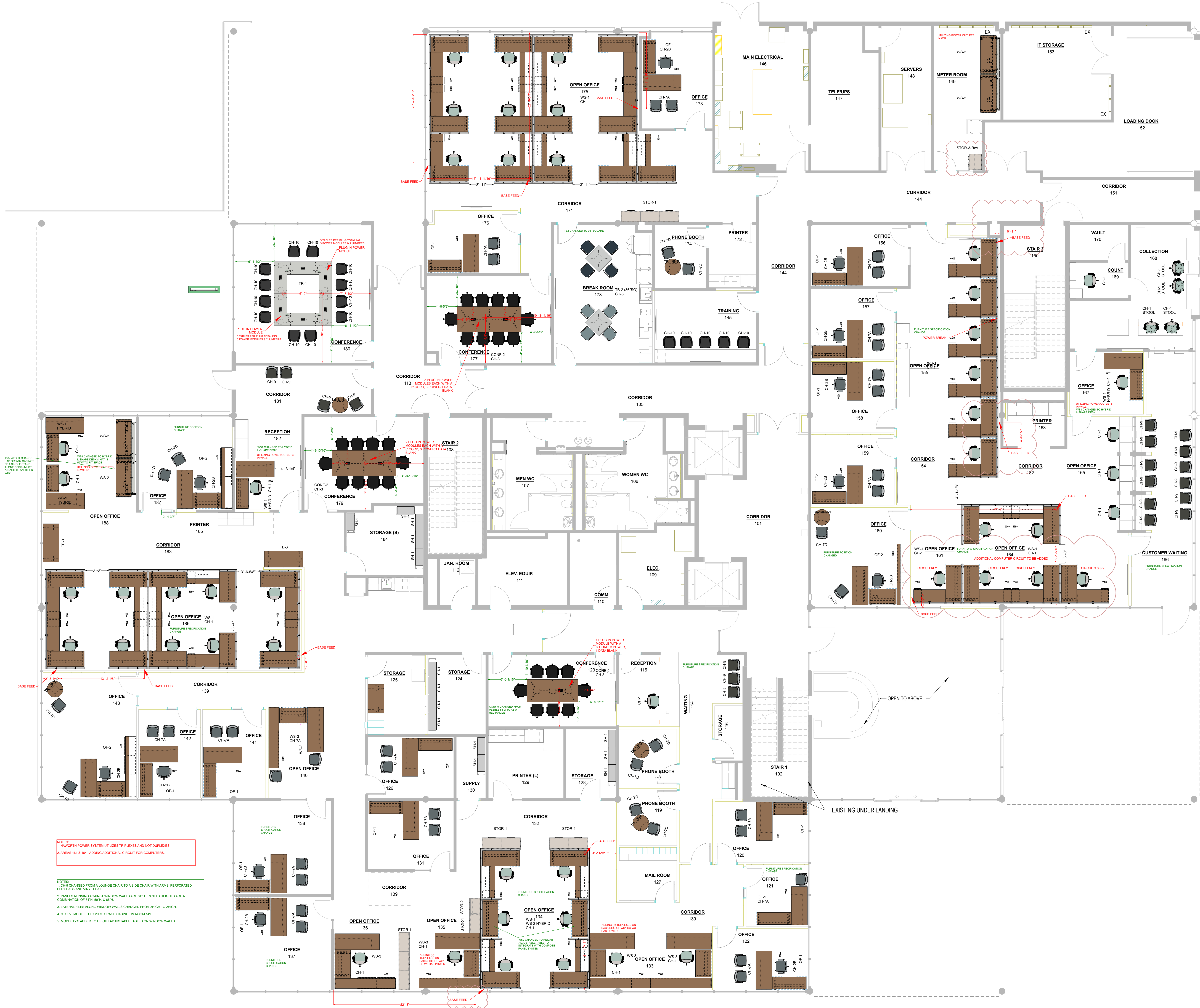
FINAL  
JOB/DRAWING PHASE

APPROVED BY

DATE

5/15/2025

1/1







**BOS Tampa**  
1600 E 8th Avenue  
Suite C-201  
Tampa, FL 33605  
813.549.7310

This print is the property of Business Office Systems, Inc. and is loaned in confidence and subject to return upon request. Copies may not be made or parts of this print reproduced in any manner without written consent from BOS. Written dimensions have precedence over scaled dimensions. Contractors will verify and be responsible for all dimensions and conditions on the job. This office must be notified of any variations from the dimensions and all of the terms and conditions shown by this print.

©2017 Business Office Systems, Inc.

CITY OF CLEARWATER

MSB - 2nd Floor

100 S Myrtle Ave  
Clearwater, FL

ORDER #

Jim Stapleton  
BOS CONTACT

Cari Bennett  
SALES PROJECT COORDINATOR

Chrisanne Schock  
PROJECT DESIGNER

REVISION: 1-15-24

- 1-20-25 CS
- 2-17-25 CS
- 3-10-25 CS
- 5-15-25 CS

FURNITURE PLAN  
SHEET NAME

FINAL  
JOB/DRAWING PHASE

APPROVED BY

DATE

5/15/2025

1/1



FURNITURE PLAN  
3/16" = 1'

\*Note: The renderings shown on this sheet are a representation of the product specified and may not necessarily show the exact features and/or options.



**BOS Tampa**  
**1600 E 8th Avenue**  
**Suite C-201**  
**Tampa, FL 33605**  
**813.549.7310**

This print is the property of Business Office Systems, Inc. and is loaned in confidence and subject to return upon request. Copies may not be made or parts of this print reproduced in any manner without written consent from BOS. Written dimensions have precedence over scaled dimensions. Contractors will verify and be responsible for all dimensions and conditions on the job. This office must be notified of any variations from the dimensions and all of the terms and conditions shown by this print.

©2017 Business Office Systems, Inc.

**CITY OF CLEARWATER**

**MSB - 3rd Floor**

**100 S Myrtle Ave**

**Clearwater FL**

**ORDER #**

**Jim Stapleton**  
BOS CONTACT

**Cari Bennett**  
SALES PROJECT COORDINATOR

**Chrisanne Schock**  
PROJECT DESIGNER

**REVISION: 1-15-25**

- 1-20-25 CS
- 2-14-25 CS
- 3-10-25 CS
- 5-15-25 CS

**FURNITURE PLAN**  
SHEET NAME

**FINAL**  
JOB/DRAWING PHASE

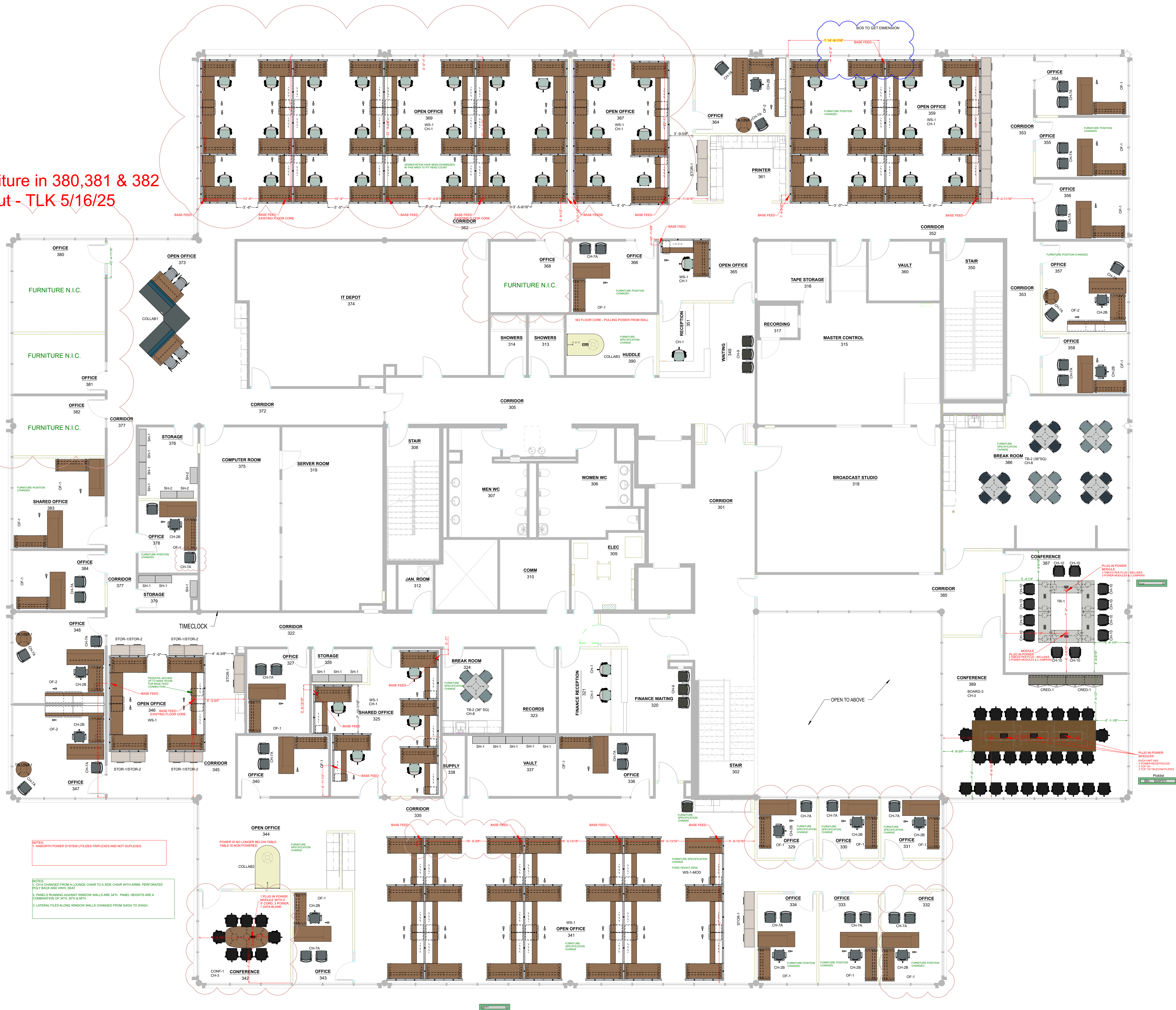
APPROVED BY

DATE

5/15/2025

1/1

Include furniture in 380,381 & 382  
per typ layout - TLK 5/16/25



**FURNITURE PLAN**  
3/16\"/>

\*Note: The renderings shown on this sheet are a representation of the product specified and may not necessarily show the exact features and/or options.